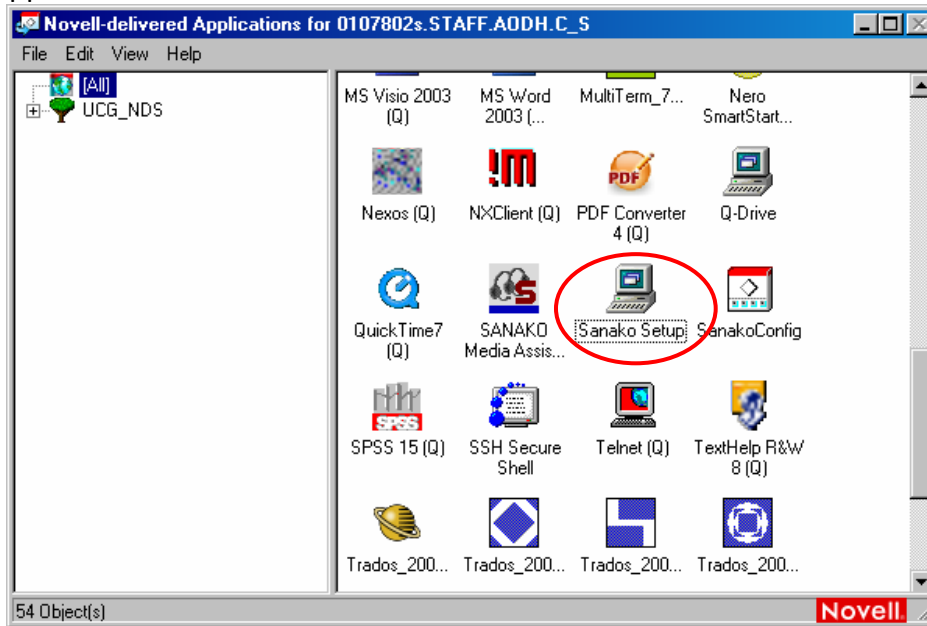



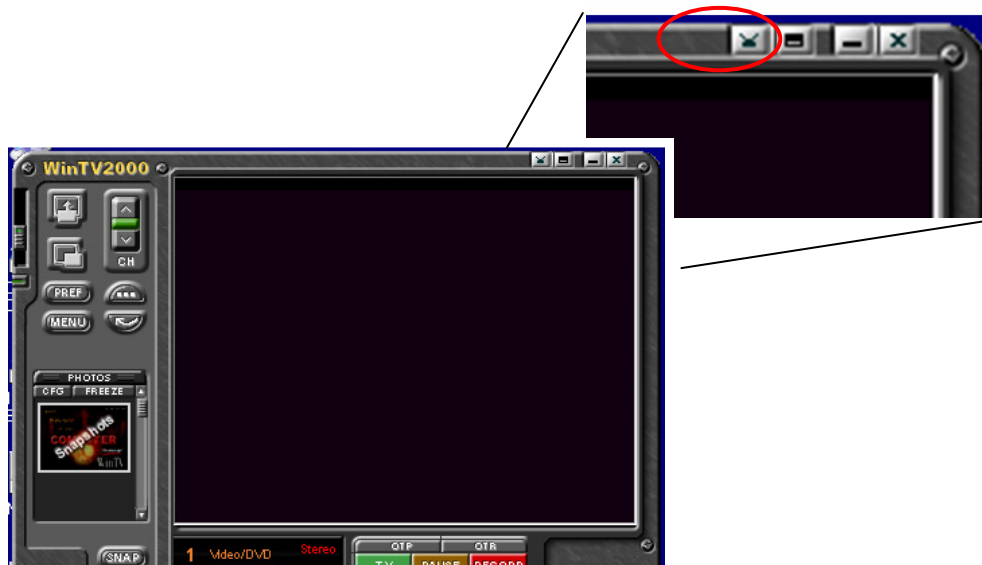


## Playing videos in the Multimedia Language Labs

- 1) Launch Sanako Setup, by double clicking on the icon in the Novell Deliver Applications window:



- 2) Launch **WinTV**, , followed by **Sanako Lab 300**, , by double clicking on their associated icons on the desktop.
- 3) In order to play audio through the classroom speaker, you must first enable the class speaker on the Sanako Lab 300 interface, by clicking on the class speaker icon, .
- 4) Insert the video into the VCR. The video will often start to play automatically, however, if it does not you can press play on the remote control, or on the front of the VCR.
- 5) To play your video in full screen mode, click on the TV mode icon in WinTV



To exit out of full screen mode, press the Esc key on your keyboard or click the right mouse button.