

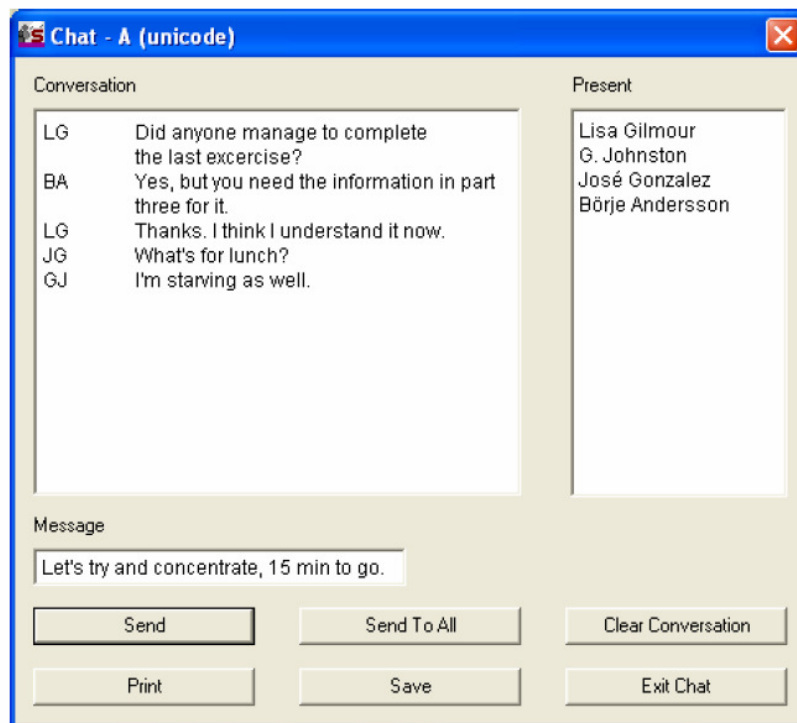
Allow groups of students to work together

1) Group chat:

- a. Assign students to groups (see Toolbar Icon Reference Sheet)
- b. Click **Communication** on the Menu bar on the top of the Sanako screen.



- c. Select **Chat**
- d. A window similar to the following should be visible



- 2) Enable students to **work in pairs** – student can see other students screen:
 - a. Right click on student and select **Enable Remote Access**
 - b. Click **OK**
 - c. Select the workstation which you want to enable remote access to
Remote access should now be established



- 3) Pair students – use the **Pair Discussion** icon – students can talk to each other

- 4) **Group conference**: assign students to groups.



Click the **Group conference** button , and click on the groups for which you want to enable this function.