



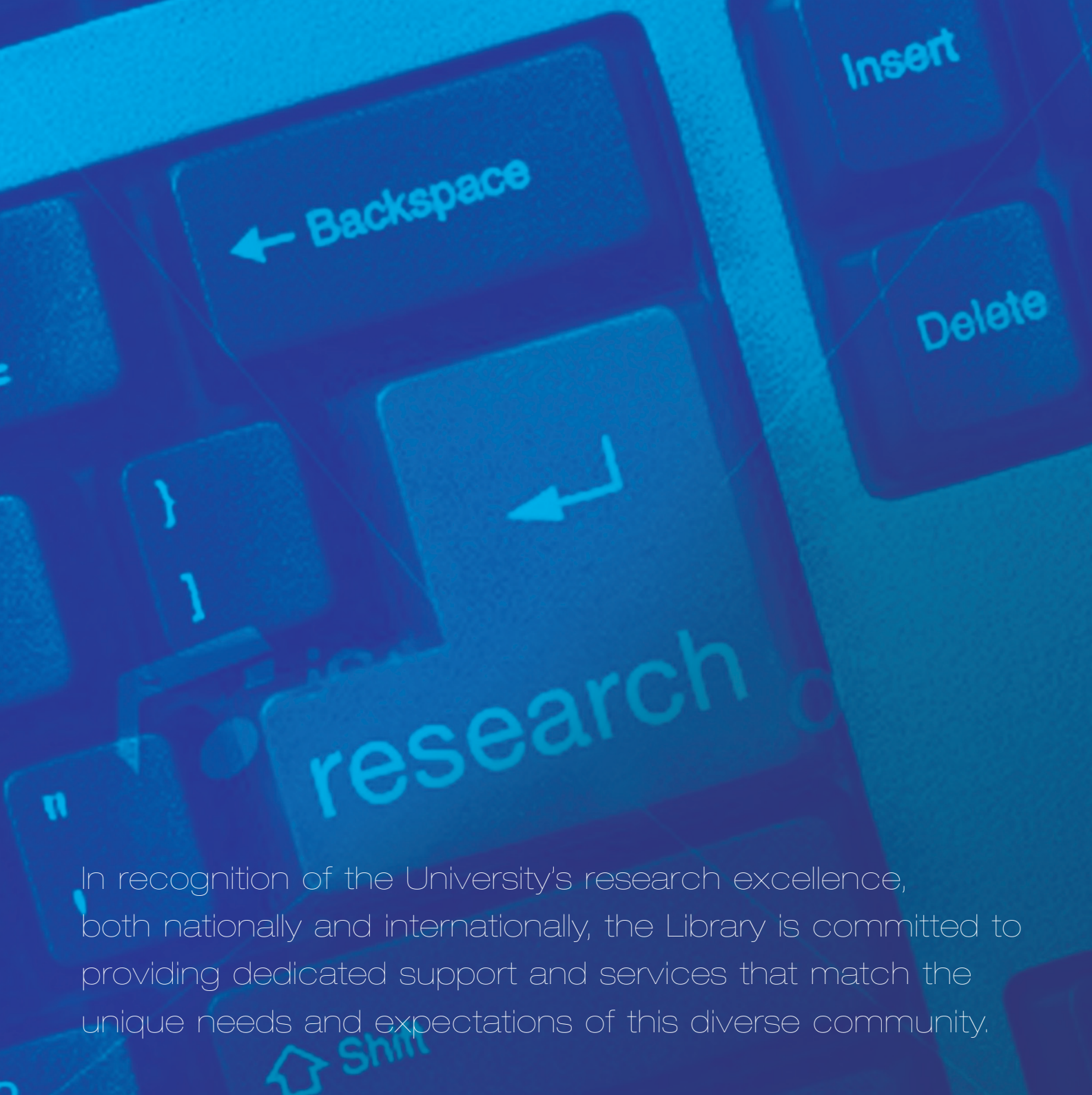
National University of Ireland, Galway
Ollscoil na hÉireann, Gaillimh

The Library

Supporting Your Research

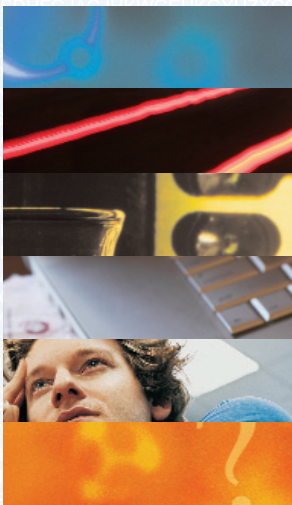


James Hardiman Library
National Library of Ireland, Galway



In recognition of the University's research excellence, both nationally and internationally, the Library is committed to providing dedicated support and services that match the unique needs and expectations of this diverse community.

contents



The Library is committed to providing dedicated support and services for your research.

Your Research Support Librarian	3
The Research Information Gateway	4
Workshops and Seminars	5
Your Research Toolbox	7
For PhDs	8
Help and Support	9

This guide outlines the services provided by the Library to support staff and students engaged in research at NUI Galway.



CONTENTS

your research support librarian

Rosarie Coughlan is the Research Support Librarian, supporting the work of researchers in the disciplines of Science, Technology and Medicine. Here are some of the ways that I can support your research activities (more information is included in this guide):

- **The Research Information Gateway** www.library.nuigalway.ie
- **Workshops and seminars**
- **1-1 consultation**
- **Targeted research support drop-in**
- **Tailored support for PhDs**
- **Costing and purchasing of new resources**

Contact

Rosarie Coughlan

Research Support Librarian

James Hardiman Library

Phone: + 353 (0) 91 495 697 (Ext: 5697)

Email: rosarie.coughlan@nuigalway.ie

the research information gateway

www.library.nuigalway.ie/

The Research Information Gateway provides a focal point for research support services provided by the Library, providing crucial information, tips and tools, relevant to your research, including:

Workshops and seminars: The Library offers a series of seminars providing a hands-on opportunity to explore relevant topics and enhance your research skills.

The Research Toolbox: This contains a range of useful information on core aspects of the research process.

Schedule a 1-1 consultation with the Research Support Librarian tailored to your particular interests / needs.

Purchasing new resources: Take advantage of available funds to purchase new journals, books, online subscriptions etc for your research.

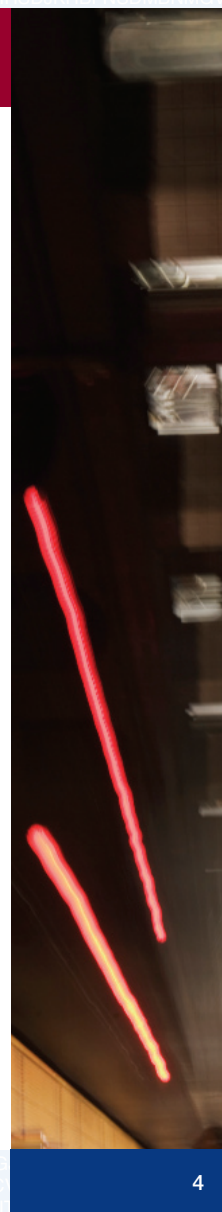
Research collections: Visit the **Resources Hub / Irish Research Electronic Library & / Inter-Library Loan Services** for the most relevant and high quality research literature in your area (including the vast range of full text articles, e-books, scientific data services and more, made available via the Irish Research Electronic Library) as well as Inter-Library Loan services.

Off-campus access and using other research libraries

University-wide research support services: This includes funding and training providers.

Supporting Research Excellence

Research Information Gateway www.library.nuigalway.ie



workshops & seminars

The Library offers a flexible programme of training and support opportunities tailored to your needs and interests. This includes:

- **1-1 consultation** with your Research Support Librarian
- **Targeted research support drop-in** – A practical opportunity to bring any question/queries you might have relevant to *your specific area of research* e.g. accessing the research literature in my area, keeping up-to-date etc.
- **Workshops and seminars** (see the programme outline below).

*Sandwich lunch provided.

- For dates and times and to register your interest in attending a workshop visit: www.library.nuigalway.ie and select the link to the Research Information Gateway.
- To schedule a group session or to recommend another topic not included in the programme email rosarie.coughlan@nuigalway.ie.



5

Title	Outline
<p>Reviewing the Literature</p>	<p>This workshop will provide an overview of key research discovery tools and services available via the Library, exploring the most effective methods of searching, accessing and locating information.</p>
<p>Advanced EndNote for Researchers</p>	<p>If you already have some experience in using EndNote this session focuses on some of the more advanced functions of this tool including:</p> <ul style="list-style-type: none"> ▶ Organising and sorting your EndNote library ▶ Manipulate images, tables, charts and PDFs within EndNote ▶ Creating bibliographies and ‘Cite while you write’ ▶ Moving your library ▶ Working with EndNote Web ▶ Creating bibliographies not linked to a paper

(Visit the Library Web pages for details of introductory sessions).

Supporting Research Excellence

Research Information Gateway www.library.nuigalway.ie

workshops & seminars

Title	Outline
Keeping Up-to-date	The sources of research information are many and varied; therefore, keeping abreast of new developments can be a real time-thief. This workshop will explore methods and tools to enable you to keep up to date with your research quickly and conveniently.
Getting Published & Making an Impact	<p>This seminar will explore:</p> <ul style="list-style-type: none"> ▶ The significance of Journal Impact Factors and other journal performance measures, used in many subject areas to determine the reputation and standing of certain journals, particularly important when applying for research funding. ▶ The scholarly communication and publications processes, including new routes to open access publishing that provides free, immediate and global online access to research output for all: <ul style="list-style-type: none"> ▶ Open Access Journal Publishing ▶ Open Access Self Archiving - institutional repositories.
Getting the Most From the Web	<p>This workshop will explore how to get the best from the Web to support your research:</p> <ul style="list-style-type: none"> ▶ Get the most from Google ▶ Locating and searching specialised information sources ▶ The Social Web – Tools and techniques to facilitate communication and networking via the Web.
Getting Started on Your PhD	<p>This workshop is aimed at students embarking on fourth level research at NUIG. It provides an overview of Library resources and research methods, focusing on higher-level research processes:</p> <ul style="list-style-type: none"> ▶ Planning your literature review ▶ Developing your search strategy ▶ Identify, select and effectively use discipline specific and multi-disciplinary research tools ▶ Evaluating information ▶ Managing your information efficiently ▶ Keeping-up-to-date with new research.

your research toolbox

The Research Toolbox provides a range of valuable information on core aspects of the research process. This can be accessed via...

www.library.nuigalway.ie

Key themes include:

Searching the literature

- Conducting a systematic review of the literature
- Locating, searching and accessing relevant, quality information in your area

Managing your research information with ease

- How can reference management software help?
- Using EndNote reference management software
- Creating bibliographies and 'cite while you write'

Research ethics

- Intellectual property rights
- Academic integrity
- Copyright

Getting published and disseminating your research

- The publications process and research output performance metrics
- Routes to immediate, permanent and global dissemination of your research
- Obtaining ISBN's or ISSN's for your publications

Keeping up-to-date with new research

- Services and tools that enable you to keep up-to-date quickly and conveniently



for PhDs

Whether you are getting started on your PhD or looking to establish your portfolio of published research, the Library offers a range of services to support you throughout the duration of your research programme.

Visit the Research Information Gateway at www.library.nuigalway.ie for crucial information, tips and tools as well as details of specific workshops and seminars designed to support you at key stages in your research including:

- **Getting Started** – the ‘nuts and bolts’
- **Accessing the current research** – the most effective tools and methods
- **Managing your research information with ease** – using bibliographic management software
- **Writing-up** – citation and referencing
- **How to get published**
- **Disseminating your research**
- **How to keep up-to-date quickly and conveniently**
- **What support mechanisms are out there? (Virtual and physical)**
- **Adding to your portfolio of highly transferable research skills.**

Study/ IT spaces

- **The Postgraduate Reading Room** – located on the second floor of the James Hardiman Library offers a quiet study environment for graduate students.
- **Group Study Rooms** – located in the James Hardiman Library, these rooms can be booked for set periods via the Customer Services Desk located on the ground floor.
- **Postgraduate PC suite** – in addition to the main PC suite on the ground floor of the James Hardiman Library the Postgraduate PC Suite is located on Floor 2.

There are additional study/PC suites located in both the Medical and Nursing libraries.



help & support

Your Research Support Librarian

Rosarie Coughlan (Science, Technology and Medicine)

James Hardiman Library

Phone: (0) 91 495 697 (Ext: 5697)

Email: rosarie.coughlan@nuigalway.ie

Your Information Librarian

Each academic department has a designated Information Librarian. They can advise and support you in finding and accessing resources and collections. Visit the Library web pages at www.library.nuigalway.ie/ for contact details.

Customer Services Desk

This is located on the ground floor of the James Hardiman Library. The staff member on duty will help you with any enquiries you might have about library resources and facilities.

Phone: (0) 91 49 3005

Email: library@nuigalway.ie

Assistive Technology Service

Located on the ground floor of the James Hardiman Library, the Assistive Technology Service provides a range of services, equipment and software to support staff and students with additional needs.

Technical Support

If you require technical support with accessing any of the Library resources, contact the Library Systems Technologist.

James Hardiman Library

Phone: (0) 91 49 5057 (Ext: 5057)

Email: john.costello@nuigalway.ie

Supporting Research Excellence

Research Information Gateway www.library.nuigalway.ie



← Backspace

Insert

Delete

research

⏪ Shift

Supporting Research Excellence



Rosarie Coughlan
Research Support Librarian
rosarie.coughlan@nuigalway.ie

James Hardiman Library
National University of Ireland, Galway
www.library.nuigalway.ie