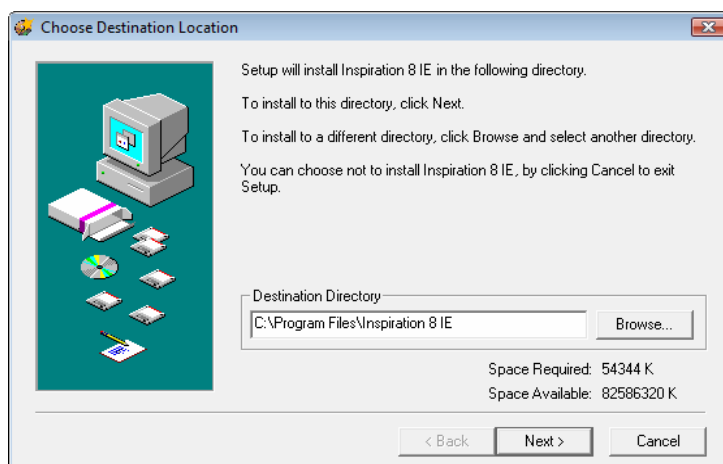


## Inspiration Installation Procedures

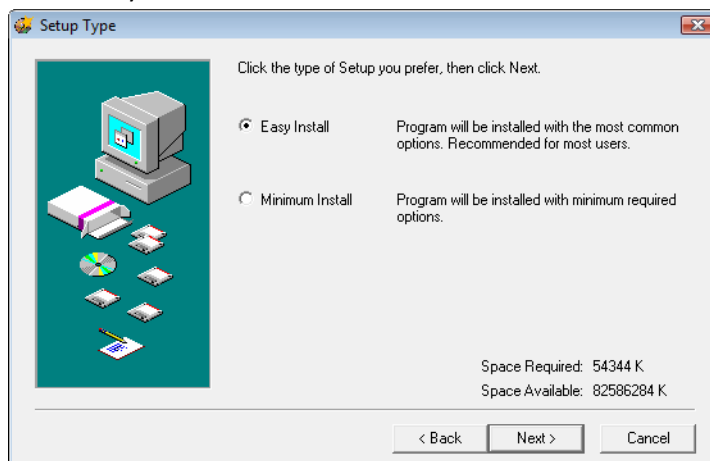
1. Click **Install**



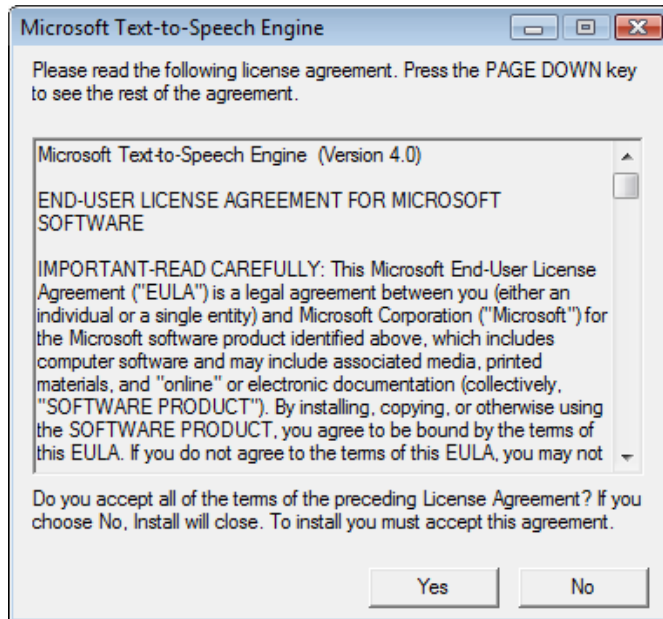
2. Leave as default the Choose Destination Director and click **Next**



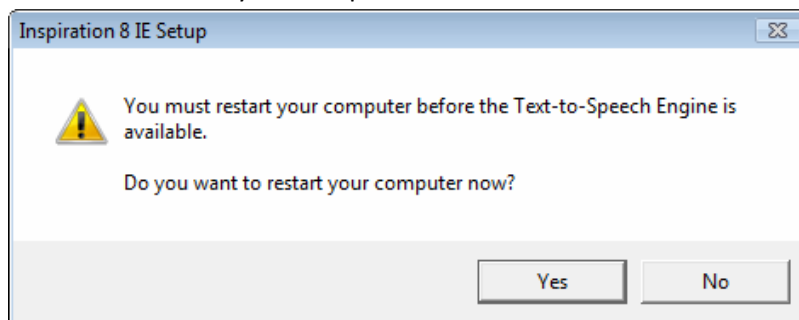
3. Select Easy Install and click **Next**



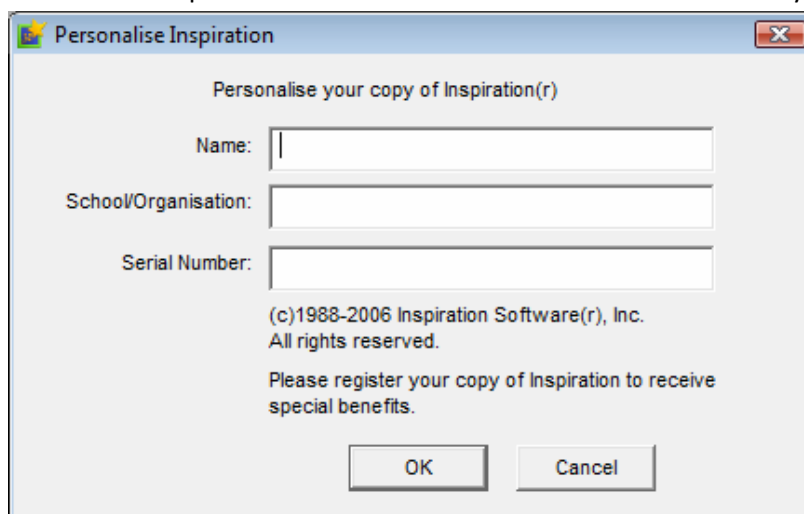
- Click **Yes** to accept all the terms of the License Agreement.



- Click **Yes** to restart your computer



- Enter in the Inspiration Serial number found on the CD Cover and your details , click OK



- Inspiration is now installed on your machine