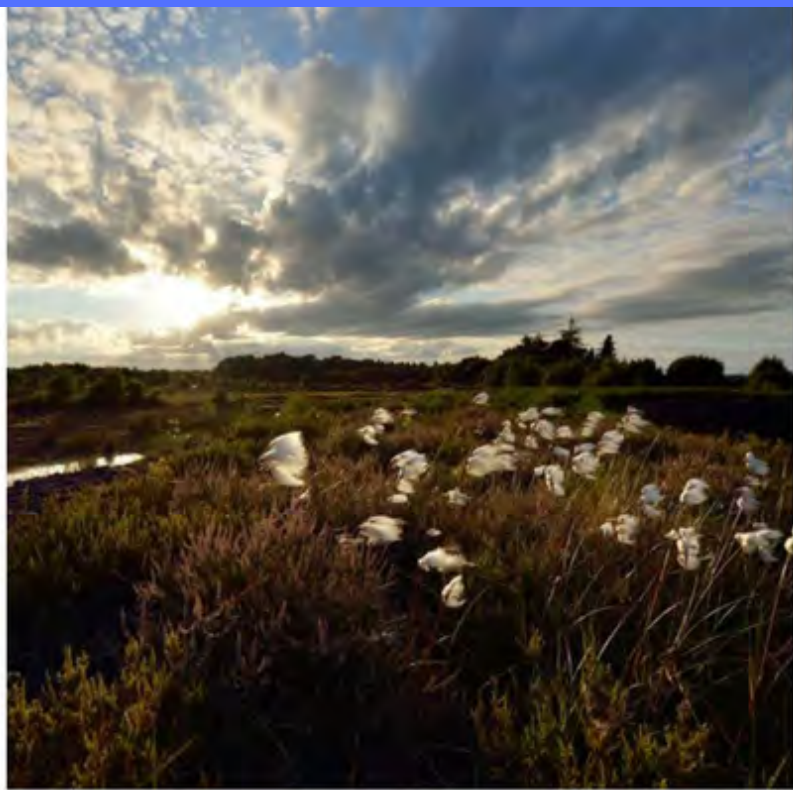


# Ecology: Living Landscapes in the West of Ireland Handbook 2018



# TABLE OF CONTENTS

<b>NUI Galway Introduction</b>	<b>1</b>
<b>Programme Structure and Teaching</b>	<b>2</b>
<b>Methods Credits</b>	<b>2</b>
<b>Module Learning Outcomes</b>	<b>3</b>
<b>Assessment Information</b>	<b>4</b>
<b>Schedule</b>	<b>11</b>
<b>Travel &amp; Visa Advice</b>	<b>13</b>
<b>Accommodation</b>	<b>14</b>
<b>Cost of Living</b>	<b>14</b>
<b>Health Care</b>	<b>14</b>
<b>General Advice</b>	<b>15</b>
<b>Galway Bucket List</b>	<b>16</b>
<b>Summer School Contact Details</b>	<b>16</b>
<b>University Facilities</b>	<b>17</b>
<b>Appendices</b>	
• <b>Appendix 1 Blackboard</b>	
• <b>Appendix 2 WiFi Access</b>	
• <b>Appendix 3 Campus Map</b>	
• <b>Appendix 4 Galway City Map</b>	
• <b>Appendix 5 Galway City Map</b>	

## Introduction to NUI Galway

NUI Galway is located on the banks of the River Corrib about 10 minute walk from the centre of Galway City. From Queen's College to National University of Ireland, the University's past is intertwined with the history of Galway and Ireland. Founded in 1845 with an initial intake of 63 students, NUI Galway is now a thriving institution with over 17,500 full and part-time students, of whom 2,758 are international students representing over 115 countries across the globe and making up over 16% of the student population.

NUI Galway is comprised of the College of Arts, Social Sciences, and Celtic Studies; College of Engineering and Informatics; College of Business, Law and Public Policy; College of Medicine, Nursing and Health Sciences; and College of Science. The University offers a wide range of undergraduate and postgraduate degrees and diplomas of international standard, providing students with opportunities for personal and academic development, as well as giving them the knowledge and skills needed to pursue successful careers. The University's approach to innovative programme development means that courses are developed to reflect the ever-changing needs of society, the labour market and the economy.

The Centre for Adult Learning and Professional Development Office at NUI Galway runs a series of part-time, flexible learning programmes for adult learners. Flexible learning options are available in Humanities and Social Sciences, Engineering, Science and Technology Studies. The International Summer School Office operates under the auspices of Centre for Adult Learning and Professional Development.

In tandem with its extensive range of programme, the University campus has expanded and developed. Over recent years, NUI Galway has embarked on a visionary development programme aimed at improving the University's campus facilities and student amenities. This major investment programme includes planning for new buildings, as well as extensions and renovations of existing facilities. The University is well on the way to creating the Campus of the Future, welcoming more students each year and developing a prestigious and innovative University.

### INTERNATIONAL SUMMER SCHOOL

The International Summer School at NUI Galway offers programmes in Irish Studies, Education in Ireland (a programme designed to offer North American teachers an opportunity to study aspects of the Irish Education System), Irish Language, Ecology, Geology and Archaeological field schools. It also provides academic credit for the Achill Archaeological Field School and Caherconnell Archaeological Field School.





## Academic Information

### Programme Structure and Teaching Methods

This new course offers students practical experience of the natural environment in Ireland. It first provides students with survey skills to identify natural resources and then develops their skills to evaluate the sustainable use and conservation of Ireland's ecological resources.

The summer school will consist of two modules, each two weeks long. Each module comprises seminars, fieldwork and assessment. Assessment will be in the form of oral presentations, self assessment and learning journals. The individual elements of each module can be taken on a daily or weekly basis, or students can choose an individual module, or do both modules and attend the entire four week course.

#### **The programme consists of two inter-related units:**

- Module 1: Living Landscapes of Connemara and Joyce Country
- Module 2: Living Landscapes of The Burren, and East County Galway

Teaching will be by means of lectures, seminars and excursions. Field trips will facilitate contact with the Irish countryside, habitats, flora, fauna and Irish conservation practitioners. Students will be provided with informal opportunities to view and study relevant information and materials from the University library. Facilities and time for private study have been incorporated into the programme.

### Course Modules:

#### **Module 1: Living Landscapes of Connemara and Joyce Country**

This module provides students with an introduction to the natural resources of West Galway: Connemara and Joyce Country in terms of their ecology, conservation and sustainability. Students will be introduced to key elements of geology, hydrology and ecology and will then develop their field skills in species identification, with a particular focus on the conservation and sustainable management of key habitats and resources in the West of Ireland

#### **Module 2: Living Landscapes of The Burren, and East Galway**

This module is based in east Co Galway. It provides students with a unique opportunity to explore the ecology, conservation and sustainability of The Burren, Shannon callows, turloughs and other landscapes in east County Galway such as raised bogs. Students will learn about key aspects of geology, hydrology, ecology and the impacts of climate change on turloughs, the Burren and Slieve Aughty mountains. Students will visit a number of sites to develop their field skills.

### Credits:

In order to quantify learning and to place a value on it, courses are allocated credit units. Credits may vary, however they represent a standard number of class contact hours and average workload for a programme. This workload includes lectures, practical work, seminars, private work and examinations. The use of the term credits is common among the third level sector and provides a "currency" with which students may transfer from one course to another or gain exemption from elements of a particular programme.

The course above carries 6 Semester Credits/12 ECTS Credits at graduate level.

### **Programme Aim:**

This course is designed to encourage a holistic approach to studying Irish ecology by looking at all aspects of how Irish habitats are created and maintained through natural processes and anthropogenic activity. It will also consider conservation and sustainability issues in the west of Ireland and how sound understanding of these ecological processes is used to combat the challenges facing the Irish environment.

### **Module Learning Outcomes being assessed**

**Upon completion of each module students should be able to:**

1. Differentiate between different Irish habitats and associated parameters
2. Explain the interrelation between different parameters that comprise landscapes and habitats
3. Survey a range of Irish species and habitat types using appropriate survey techniques
4. Consider potential species and habitat attributes and properties which can be used to undertake an assessment of the condition of species populations and habitats
5. Differentiate between conservation management and habitat restoration strategies for a range of Irish species and habitats
6. Assess the effectiveness of conservation management strategies for different Irish species and habitat types
7. Identify and evaluate best practice restoration strategies for Irish species and habitats

### Assessment:

Assessment for those requiring credits will be carried out on a continuous basis.

### Assessment Weighting

The programme will be assessed and graded on the following basis:

- Participation Self-assessment 10%
- Oral presentation 20%
- Group project 20%
- Learning Journal 50%

Lecture attendance and self-assessment will be monitored continuously.

Oral presentations take place regularly throughout the programme and will be assessed by observation.

Group projects will be presented on the final day of the programme.

The Learning Journal will be assessed according to stated criteria.

The completed Learning Journal is due on the penultimate day of each two-week module.

### Summary of Assessment:

	<b>Activity 1</b>	<b>Activity 2</b>	<b>Activity 3</b>	<b>Activity 4</b>
	Learning Journal	Attendance & Participation	Oral presentation	Group project
Summary of Requirements	Responses to and reflections on programme topics.	Attendance at lectures & class activities. Completion of weekly Self assessment	5 minute presentation	Presentation of group projects (10 minutes each group)
Word count	2500	Not applicable	Not applicable	Not applicable
Final Submission Date	Thursday of 2nd week	Final Day of Programme	Continuous	Continuous
Submission Method	Digital Copy	Hard Copy	Not applicable	Not applicable
Assessment Weighting	50%	10%	20%	20%

## Activity 1: Learning Journal

Students are asked to complete a Learning Journal in which students reflect on their understanding of ecological practice and how their participation in and learning from the Summer School programme has informed and enhanced their perspective of conservation ecology in general and Ireland in particular. When completing their Learning Journal students are encouraged to write in a reflective manner, that is to write in a way that shows they have thought about and mulled over the topic they have studied to bring about real learning.

### Guiding points

This document should contain:

- A brief 'scene-setting' entry at the beginning on the student's expectations of the course.
- Responses to and reflections on the topics of the module. At sessions, specific questions will be raised for discussion and will be posted on Blackboard as a reminder for journal entries. Students should reflect on their opinions on the topics and whether and how what they have learned about might relate to them.
- Integration of new learning and current practice: what, if any, are the implications of students' new learning for their own practice? Do students now think about current conservation practice differently? Why? What is being done well? What can be improved? In what way do practices in the students' home country and Ireland differ? Which is better or do both have merit? In what way? Why? In what way will students use some of the information and learning gained throughout the programme?

Word count: approximately 2,500 words.

### Assessment Criteria

Assessment activities will be assessed against the following criteria:

- Engagement in reflective thinking that demonstrates a deep awareness of ecological surveys and conservation management.
- Assimilation and integration of new knowledge in the approach to species and habitat management.
- Evidence of continued commitment to improve understanding of conservation ecology.
- Demonstration of critical evaluation of the issues surrounding conservation theory and practice.

## Activity 2: Participation Self-assessment

For this activity students are asked to self-assess their participation in class discussions, group activities and overall participation in Summer School activities.

Student Name: \_\_\_\_\_

Date: \_\_\_\_\_

Activity	Self-Rating					Example of behaviours displayed
	Low – High					
	1	2	3	4	5	
Motivating yourself to optimal performance						
Contributing to class discussions						
Sharing personal experience						
Tackling group work activities						
Working well with fellow learners						
Listening attentively to others						
Responding to others						
Participating enthusiastically						
Taking responsibility for your own learning						
Recognising the need for professional development						
Expressing information and ideas clearly						
Seeking out others’ perspectives						

Other ways you demonstrated optimal participation

1. \_\_\_\_\_
2. \_\_\_\_\_
3. \_\_\_\_\_





### **Activity 3: Oral Presentation**

During the Summer School students will be asked to prepare an oral presentation on a specific aspect of Irish species or habitat conservation management. Each student will be allocated a topic during the Summer School and given time to prepare a presentation to peers and to tutors.

When preparing the presentation student should consider the following questions:

- What makes this topic interesting in relation to overall understanding of conservation ecology?
- What are the main conservation issues relating to the assigned topic, what information is required to assess the overall conservation issue?
- What are the possible conservation management options that apply to the assigned situation?
- What insights have students gained on how ecology and conservation in Ireland was and is being shaped?

### **Activity 4: Group Project**

For this activity, students are asked to prepare a group project. Students will be presented with one large-scale conservation issue with student groups assigned different stakeholder roles. The student groups must first assess and present the conservation issue from the perspective of their stakeholder role followed by a group discussion on suggested ways to address the conservation issue. The project allows groups to delve deeper into the different perspectives of stakeholders in relation to conservation management.

Topics for study might include:

- Changes in farming practices and the conservation status of specific habitats in Ireland
  - Willingness to pay for conservation practices
  - Policy measures to resource payment for ecosystem services
  - The role of sustainable communities in enhancing and restoring biodiversity
  - Invasive species impacts - who should pay for their control or management
  - Can Ecotourism deliver nature conservation
  - Water quality and land management practices
  - Could rewilding play a role in land management in the future (farming and ecotourism)
- When preparing the presentation, each group should consider the following questions:
- Provide a succinct outline of the conservation issue (include reference to relevant policy instruments/practices)
  - Outline the role of the stakeholder
  - What are the key priorities for the stakeholder?
  - How does the conservation issue impact on the stakeholder?
  - What are the possible options that apply to the assigned situation?
  - What are the strengths, weaknesses, opportunities and threats from the perspective of the stakeholder?
  - What are potential policy instruments/ practice changes that might help with the conservation issue from the perspective of the stakeholder?

## Schedule

Module	Week 1 & 2
<i>Module 1</i> Living Landscapes of Connemara and Joyce Country	18 June – 29 June, 2018
<i>Module 2</i> Living Landscapes of The Burren, and East County Galway	2 July – 15 July, 2018

### Module 1: Living Landscapes of Connemara and Joyce Country

This module is based in west Co Galway. It provides students with an opportunity to explore the natural resources of Connemara and Joyce Country in terms of their ecology, conservation and sustainability.

Week 1: Students will be introduced to key elements of Geology, Hydrology and Ecology on day one and will spend the week developing their field skills in plant and animal identification, with a particular focus on the conservation and sustainable management of key habitats and resources in the west of Ireland, such as wetlands and grasslands.

Week 2: Students will survey uplands, woodlands, wetlands and aquatic habitats with a particular focus on the conservation of key habitats and community based solutions to environmental problems in the west of Ireland.

#### Detailed breakdown of Module 1, Week 1:

##### Day 1: Programme Orientation

###### Day 1: Module Introduction

Topics covered: introduction to the course and overview of Co Galway: Geology, Hydrology, Climate, Zoology and Botany.

###### Day 2: Connemara

Topics covered: Geology and soils, landscape, landscape character assessment Field investigations of relevant landscape elements using a range of survey techniques.

Day 3: Uplands habitats and management – survey skills – plant identification, habitat mapping and assessment of uplands and management. Time for self-study.

Overnight stay at Letterfrack

###### Day 4: Conservation Management

Topics covered: Introduction to conservation management. Trip to Connemara National Park to assess recreation & conservation management and interpretation. In addition, this trip will evaluate the use of sheep, cattle and the Connemara pony for habitat management and assessment of upland habitats.

###### Day 5: Conclusion

Morning for individual study and preparation, Afternoon: Individual Presentations

## **Detailed breakdown of Module 1, Week 2:**

### **Day 1: Introduction**

Introduction to the course and west Galway, freshwater habitats, Hydrology survey.

### **Day 2: Trip to Connemara:**

Topics covered: Freshwater sampling in bog and woodland stream habitats. Use of invertebrates to assess water quality (Biotic indices). Freshwater Pearl Mussel.

### **Day 3: Lough Corrib**

Topics covered: Lough Corrib: assessment of the lake, freshwater habitats, Consideration of the management issues associated with Lough Corrib: conservation management, invasive species, recreation, tourism, development and trip to Cong & Petersburg.

Overnight stay at Petersburg Outdoor education centre. Bat walk (weather dependant).

### **Day 4:**

Joyce Country habitats and GeoPark project, and west Galway issues. Time for self-study.

### **Day 5: Morning for individual study and prep, Afternoon: Conclusions, Group Project Presentations**

## **Module 2 Living Landscapes of The Burren, and East County Galway**

This module is based in east Co Galway. It provides students with a unique opportunity to explore the ecology, conservation and sustainability of The Burren, turloughs, bogs and coasts.

*Week 1:* Students will be introduced to key aspects of Geology, Hydrology, Ecology and the impacts of climate change on turloughs and The Burren and Slieve Aughty mountains. Students will visit a number of sites to develop their field skills, map habitats and learn from practitioners regarding the sustainable use and conservation of key habitats and resources in The Burren and Slieve Aughties.

*Week 2:* Students will survey the biodiversity of bogs and coasts with a particular emphasis on the role of stakeholders in the management and conservation of habitats and wildlife, such as Birdwatch Ireland projects, Ballydangan Red Grouse Project and erosion prevention.

## **Detailed Breakdown of Module 2, Week 1:**

### ***Day 1: Programme Orientation***

#### **Day 1: Module Introduction**

Topics covered: introduction to the course and overview of east Co Galway: Geology, Hydrology, Climate, Zoology, Botany and Landscape.

#### **Day 2: Hydrology, Geology & Landscape**

Topics covered: Field trip from Slieve Aughty Mts to Kinvara with Tiernan Henry and others, turloughs. Overnight stay in Carran Field Station. Time for self-study.

#### **Day 3: Burren**

Topics covered: The Burren, species identification and habitat mapping, sustainable use and conservation: ecotourism, local businesses. Overnight stay in Carran Field Station.

**Day 4: Burren & Turloughs**

Topics covered: Burren, habitat management, farming in the Burren and on turloughs: Farm walk. Afternoon for self-study

**Day 5: Student Presentations and Conclusion Detailed**

**Breakdown of Module 2, Week 2:**

**Day 1: Introduction**

Topics covered: Introduction to Bogs, their formation, uses and conservation problems. Blanket bog field trip, plant identification and invertebrates (sweep-netting)

**Day 2: Raised Bogs**

Topics covered: Raised bogs, field trips to bogs, tradition vs conservation and restoration projects (Ballydangan, Garriskil Bog) Turfcutting

**Day 3: Galway Coast**

Topics covered: Coastal habitats, rocky shores, lagoons and sandy shores, erosion impacts and prevention, grazing impacts and community restoration project, Roundstone (Overnight stay in Connemara)

**Day 4: Galway Coast**

Seaweeds – identification, harvesting and uses Time for self-study.

**Day 5: Morning for individual study and prep, Afternoon: Group Project presentation and Conclusion**



**International Summer School**  
**Ecology: Living Landscapes of Connemara and Joyce Country**  
**Monday 18 June - Friday 29th June 2018**

**Indicative Programme Timetable\***

**Week 1 – Monday, 18th June – Friday, 22nd June**

**Lecture venue: Environmental Science Seminar Room (ES201), Environmental Science wing, Arts/Science Building**

<b>Monday, 18th June</b>	
9am-10am	Introduction to the practicalities of module such as timetable schedule, risk assessment, field trips, Blackboard access, record keeping etc.
10-11am	Module Introduction including Programme structure, Programme Aim, Outcome being assessed, Assessment methods, Credits, Recording of activity, Selection of topics for weekly oral presentations
11am-12pm	Tour of the College
12-1pm	Lunch
1-2pm	Introduction to the Geology of the area.
2-3pm	Introduction to the Hydrology of the area.
3-4pm	Introduction to the Botany of the area.
4-5pm	Introduction to the Wildlife fauna of the area.
<b>Tuesday, 19th June</b>	
9am-10am	Preparation for the field trip to Connemara. History of the landscape Discussion of methods used in landscape character assessment
10am - 4pm	Field Trip to Connemara involving field investigations of relevant landscape elements. Route to cover Peacocks tower and cut back via the coast.
<b>Wednesday, 20th June</b>	
9am-10am	Preparation for the field trip and overnight stay at Letterfrack. Discussion of habitat identification (Fossit 2000) plant identification. Quadrats transects.
10am	Field trip with habitat identification, mapping, vegetation surveys, plant identification. Quadrats transects. ? Bat walk Overnight stay at Letterfrack.
<b>Thursday, 21st June</b>	
9-10am	Preparation for trip to the Connemara National Park including introduction to European and Irish Legislation surrounding National Parks, NHA, SAC. habitat and species conservation etc
10am-4pm	Connemara National Park field trip with discussion of recreation and conservation management. Sheep, cattle and Connemara Pony for habitat management. Assessment of upland habitats
<b>Friday, 22nd June</b>	
10am-12pm	Time for individual study and updating records
1pm-2pm	Lunch
2pm-Finish	Oral Presentations Questions and Answers

**International Summer School**  
**Ecology: Living Landscapes of Connemara and Joyce Country**  
**Monday June 19th -Friday 30th June 2018**

**Indicative Programme Timetable\***

**Week 2 – Monday, 25th June – Friday, 29th June**

**Lecture venue: Environmental Science Seminar Room (ES201), Environmental Science wing, Arts/Science Building**

<b>Monday, 25th June</b>	
9am-10am	Introduction to freshwater habitats and preparation for hydrology field trip
10am-2pm	Field Trip to West Galway for hydrology survey
<b>Tuesday, 26th June</b>	
9am-10am	Preparation for field trip-. Use of freshwater invertebrates as Bioindicators.
10am - 4pm	Freshwater biological sampling and comparison at different locations and calculation of Trent Biotic Index, Q-values. Invertebrate identification.
<b>Wednesday, 27<sup>th</sup> June</b>	
9am-10am	Preparation for the field trip and overnight stay at Petersburg. Management issues associated with Lough Corrib. invasive species recreation etc
10am	Field trip to Cong and Petersburg with an assessment of Lough Corrib, conservation management and development Overnight in Petersburg Outdoor Education Centre ? Bat Walk
<b>Thursday, 28th June</b>	
9-10am	Background to the GeoPark project and West Galway issues
10am-2pm	Time for self-study
<b>Friday, 29th June</b>	
10am-12pm	Time for individual study and updating records
1pm-2pm	Lunch
2pm-Finish	Oral Presentations Questions and Answers

\*Indicative timetable: The timetable will be finalised when student numbers are confirmed. It may be subject to slight changes dependant on weather or other unforeseen circumstances which may arise during the course.

## Travel & Visa Advice

### Visas

You can check if you need a study visa on the website of the [Irish Naturalisation & Immigration Service](#). More detailed advice about study visas can be accessed on the website of the [International Affairs Office](#) at NUI Galway. As a summer school student, you will spend approximately five weeks in Ireland and therefore do not need to register with the Garda National Immigration Bureau. When checked by immigration officials on arrival in Ireland, your passport will be stamped up to the end of your summer school course. Should you wish to stay for a longer period, you may need to liaise with the Garda National Immigration Bureau after arrival to facilitate an extension to your stay. The Summer School Office will be able to assist with this process.

**Please ensure you bring your passport and original letter of offer with you to show to immigration officials at your point of entry to Ireland.**

### Travel

The major airports in Ireland are Shannon (on the west coast, approximately 55 miles from Galway) and Dublin (on the east coast, approximately 135 miles from Galway). Shannon Airport is the closest international airport to Galway City.

[Shannon International Airport](#) is approximately a 2 hour drive from Galway City. Shannon Airport is serviced by [Bus Éireann](#).

[Dublin International Airport](#) is approximately a 3 hour drive from Galway City. A number of bus services operate connections from Dublin Airport to Galway City centre: [Citylink](#), [GoBus](#) and [Bus Éireann](#). A regular train service provided by [Irish Rail](#) operates from Dublin (Heuston Station) to Galway. The [Airlink](#) bus service provides regular departures from Dublin Airport to the city centre and Heuston Station. Airlink prepaid tickets can be bought at the Bus and Rail information desk at the airport. They can also be bought from the vending machines located at the bus departure points on the arrivals road. You can get a taxi from the airport to the centre of the city, but the bus is less expensive and just as quick.

[Ireland West Airport](#) is approximately 1.5 hour drive from Galway City. The airport is serviced by [Bus Éireann](#).

[Cork International Airport](#) is approximately 3.5 hours from Galway City and is serviced by [Citylink](#).

### Arrival in Galway

Upon your arrival at Galway Coach Park/Bus & Train Station, located adjacent to Eyre Square, several taxi services are available which can take you to your accommodation where you can check in and drop off your bags. [City Direct](#) and [Bus Éireann](#) provide bus services within Galway City and operate from Eyre Square. A route map for the city bus services is available [here](#).

### Registration

Staff from the International Summer School Office will attend the Introductory talk in ES201 on Monday, 18th June, 2018 at 9am.

### Tourist Information

On arrival in Galway, general information may be obtained from Ireland West Tourism Information Office, Forster Street. Tel. 091 537700.

## Accommodation

Accommodation will be provided in [Corrib Village Student Residence](#). Rooms in [Corrib Village](#) will be allocated on arrival. Corrib Village is approximately a 10 minute walk to class. Homestay accommodation will be with local host families. Bed sheets/blankets: bed linen and towels are provided in Corrib Village and in home-stay accommodation. Home-stay allocations will be confirmed prior to arrival. Students will be advised of the name, address and contact details of their host family. Students are encouraged to contact the host family to confirm an arrival date and time. Home-stay houses are located in the Newcastle area of Galway, within walking distance of the campus.

## Cost of Living Guidelines

**Meals/Food:** Full Irish breakfast is provided at home-stays. Allow approximately €25 - €30 per day, to cover snacks, lunch and light evening meal if you are eating at a cafe/restaurant. NOTE: There is no self-catering option at the home-stay residences.

As kitchen/cooking facilities are available at [Corrib Village](#) student residence, it is cost effective to buy groceries at local supermarkets and self-cater. Allow approximately €40 - €50 per week to buy groceries.

There is a small grocery store available at Corrib Village. Local supermarkets ([Dunnes Stores](#), Eyre Square Shopping Centre and Headford Rd., [Tesco](#), Headford Rd, [Lidl](#), Headford Rd, [Aldi](#), Headford Rd) are within a 15 minute walk of Corrib Village. An hourly, free shuttle bus service between [Corrib Village](#) and Galway City Centre is available throughout the summer and can be used to access shopping facilities.

- **Local transportation:** The average bus fare within the city is €2.10. Taxis cost from €8 - €12 (within the general Galway City area).
- **Books and supplies:** Approx. €60 - €80 depending on courses chosen.
- **Laundry/toiletries:** Laundry at [Corrib Village](#) is coin operated and costs €3 per wash and €2 to dry (full machine loads). Toiletries can be purchased quite reasonably at supermarkets or local pharmacies.
- **Social Activities:** Entrance to cinemas: €7 student rate applies with a valid student ID card. Theatre tickets cost slightly more. Entrance to nightclubs: €10 - €15.

## Health Care

International Summer School Students who need to attend a doctor's surgery can avail of the following General Practitioner clinics in the local area.

- [Dr. Fergil Colohans Surgery](#) in the Headford Road Shopping Centre (Tel 091-565664). This service is available at a discounted student rate.
- **Doctors Clinic** located at 32 Newcastle Road, (Tel 091 520340) is a General Practitioner's Service available to students.

There is an on call, after-hours emergency medical service available to all students after 5.00 pm. This service can be accessed by calling 087-2623997. There is a charge for this service.

### Emergency medical help

In the case of a serious accident, dial 112 for emergency services and request an ambulance.

An **Accident & Emergency** service is available at University College Hospital Galway. This facility is located on the Newcastle Rd, close to NUI Galway.

Students with ongoing medical conditions are advised to contact the International Summer School Office ([summerschool@nuigalway.ie](mailto:summerschool@nuigalway.ie)) in advance of arrival to discuss your medical support requirements. You are advised to have private health insurance in place prior to arrival.

## General Advice

### Time Management

One of the greatest challenges facing summer school students is time management. You will need to balance the commitments of attending class, doing course work and participating on field trips, while also making time to enjoy all that Galway City and its festivals have to offer. You may also want to visit other parts of Ireland while here. You will have a very busy schedule while in Galway so it is worth considering scheduling time before the start, or at the end of the summer school to allow time to travel and enjoy a vacation.

### Weather/Clothing:

Ireland has a temperate climate and does not experience extremes of heat or cold. It does however, have high rainfall levels. The weather is unpredictable and can change dramatically in a short period of time.

Prepare to dress in layers and ensure that you have waterproof clothing and footwear for wet days. This is especially important if you are participating in field trips, where you will be exposed to the elements.

The dress code for class will be casual, but you may wish to bring something dressy for nights on the town or a visit to the theatre. Remember to leave room in your bag for souvenirs on the way home.

We recommend you include the following items on your packing list:

- Waterproof walking shoes or hiking boots
- Waterproof jacket and leggings
- A fleece
- Backpack for field trips
- Umbrella
- Camera and memory cards
- Chargers for your electrical equipment
- Power converter/adaptor\*
- Sunscreen
- Sunglasses
- Prescription medicines and a copy of your prescription

\*The electrical supply in Ireland is 230v 50hz. Plugs use a three-pronged formation. If your electrical devices use a different current, you will need both a power converter and a plug adaptor.

### Galway Festivals

Four festivals take place during the month of July in Galway City. [Galway Film Fleadh](#), [Galway International Arts Festival](#) and [Galway Fringe Festival](#), bring visitors from around the world to experience the best in music, film, theatre, literature and visual art. The week long horse-racing festival, the [Galway Races](#), at the end of July is Ireland's most well-known racing festival.

### Currency

The Euro is the single currency of the Economic and Monetary Union (EMU). The Euro is made up of 100 cents.

### Banking

A branch of the Bank of Ireland is located on campus adjacent to the lecture rooms on the Concourse. Opening hours are Monday – Friday, 10.00 a.m. – 4.00 p.m. There are ATM facilities available on campus and throughout the city. In some parts of rural Ireland, you may not be able to use a debit/credit card, so ensure you bring cash with you.

### Postal Services

Students may have mail addressed to them **c/o Ecology Programme, Summer School Office, National University of Ireland, Galway, Ireland**. A post office is located adjacent to the Newcastle Road entrance to the University.

### Galway Bucket List

1. Walk the Salthill Promenade (don't forget to kick the wall at the end)
2. Attend a GAA football or hurling match
3. Eat fish and chips at McDonagh's on Quay St and try curry chips from Supermacs after a night on the town
4. Attend a [Rab Fulton Celtic Tales](#) story telling session in the Crane Bar
5. Get to a [Little Cinema](#) night in the [Roisín Dubh](#) on the last Wednesday of each month
6. Attend as many events at Galway's summer festivals as you can manage
7. Hang out in Spanish Arch ("Sparch") on a sunny day
8. Visit Galway Market on a Saturday and try the fresh food stalls
9. Jump off the diving board in Salthill into the frigid Atlantic Ocean
10. Enjoy a traditional music session in [The Crane Bar](#)/[Tigh Coilí](#)/[Taaffes Bar](#)
11. Attend a reading in [Charlie Byrne's Book Store](#)



1. Get to a live gig or a silent disco at the [Roisín Dubh](#)
2. Try set dancing in [Monroe's Tavern](#) on Tuesday nights
3. Enjoy Galway City's many buskers on Shop Street
4. Have drinks outside [Tigh Neachtain's](#) on a sunny day and watch the world go by

## Summer School Contact Details

Elaine O'Riordan  
Programme Director  
Applied Ecology Unit  
NUI Galway  
Tel: + 353 91 493572  
Email: [elaine.oriordan@nuigalway.ie](mailto:elaine.oriordan@nuigalway.ie)

Maria Brady  
International Summer School Office  
Nuns Island  
National University of Ireland, Galway  
T: 353 91 495442  
E: [summerschool@nuigalway.ie](mailto:summerschool@nuigalway.ie)

Gesche Kinderman  
Applied Ecology Unit  
NUI Galway  
Tel: + 353 91 493863  
Email: [gesche.kinderman@nuigalway.ie](mailto:gesche.kinderman@nuigalway.ie)

W: <http://www.nuigalway.ie/international-summer-school/>  
Facebook: <https://www.facebook.com/summerschoolgalway/>  
Twitter: <https://twitter.com/gwysummerschool>  
Instagram: <https://www.instagram.com/gwysummerschool/>

## Recommended

We recommend that students join our social media channels on [Facebook](#), [Twitter](#), [Instagram](#), once you are accepted to your summer school programme. We will be posting important information, advice and competitions prior to departure and throughout the summer.

## University Facilities

### Registration

Registered students of NUI Galway have access to University facilities. Staff from the International Summer School Office will attend Introductory talk in ES201 on Monday, 18th June, 2018 at 9am.

### Tuition & Accommodation Fees

Balance of tuition/fees and accommodation payments must be paid in full online by 30 May, 2018.

### Policy regarding guests of registered participants

Lectures, educational excursions and associated receptions are attended by registered students only.

Library services within the University will be available to students during the following times:

08.30 - 17.30

09.00 - 17.00.

## Computer and Email Facilities

Campus Account (IT Account) credentials are a single user ID (your Student ID number) and password. These credentials provide access to the following services:

- [PC Suites](#)
- [WiFi](#)
- [Email & Office 365 Apps](#)
- [Blackboard](#)
- [Library Systems](#)

Your temporary activation password allows access to PC Suites and WiFi on-campus.

1. Go online to <https://cass.nuigalway.ie/>. Login using the following credentials:  
**User ID** is your current Student ID number available on your registration statement.  
**Password** is your temporary Activation Password galwayDDMM (the word galway followed by the date and month from your date of birth e.g. If your date of birth is the 9th of November your temporary activation password is galway0911).
2. Complete the activation questions.
3. Choose your new **Campus Account Password**. **Note:** Password must be at least 8 characters in length.
4. Your Campus Account is now active

The University provides a large number of PC Suites across the campus, providing free internet and email facilities to registered students. A list of computer suites can be found on the ISS [website](#).

The NUIGWifi service is designed to provide students, staff and registered guests with easy access to the Internet. You connect to NUIGWifi automatically and authenticate with your user ID and password via your web browser e.g. Internet Explorer. Students should login in with their Login with your Campus Account User ID and password.

Your Student Email uses Office 365 which is a hosted service by NUI Galway in collaboration with Microsoft. Office 365 combines the familiar Office desktop suite with the latest, cloud-based versions of Microsoft next-generation communications and collaboration services.

Your student email account is accessed at <http://studentmail.nuigalway.ie>. Your NUI Galway email address will be listed on your registration statement. You will login with your NUI Galway email address and your CASS password. After arrival, all email communication from staff of NUI Galway will be sent to your NUI Galway email account.

Within each PC suite there are a number of networked printers to which you can print. These printers produce standard A4-sized black-and-white laser printouts. A small number of PC suites also contain printers that can produce A3-sized printouts. You collect your print job yourself within the suite.

### Credit Based Printing

As a student you automatically have a print account. A charge is applied for each print job using a credit-based system. You can purchase print credit online at <https://printcredit.nuigalway.ie/>.

Once on the site use the following instruction.

1. Click the **Student Login** option, and login using your [Campus Account](#) details.
2. Using the drop down list you can select the amount you want to credit (€5.00 minimum).
3. Click **Proceed to Secure Payment** which takes you to a secure payment page for you to enter credit or debit card details.
4. The print credit will be immediately added into your account.

Credit can also be purchased from [Print Kiosks](#) located in: the Print Release Room 125A, opposite the Arts and Science PC Suite in the Arts & Science Building, the front foyer in the Cairnes' Building and also in the James Hardiman Library.

Purchasing credits from the kiosks is straightforward.

1. Use the touch-screen keyboard on the kiosk monitor to login using your [Campus Account](#) details.
2. Your balance will be displayed and you can add notes or coins to credit your print account.
3. The amount deposited will be displayed on screen and be credited to your print account immediately.

### Service Desk

The Library and IT Service Desk provides first level advice and support to students and staff on both Library and IT services. The Service Desk is located in the foyer of the James Hardiman Library. Staff at the Service Desk can assist with your queries on the following topics :

- |   |  |
|---|--|
| <ul style="list-style-type: none"><li>• User ID / Passwords – Campus, email and Library Accounts</li><li>• Book Loans – Issuing and Renewals</li><li>• Printing / Copying / Scanning</li><li>• Support for NUI Galway Email (Student &amp; Staff)</li><li>• WiFi Access (NUIWiFi / EduRoam)</li></ul> | <ul style="list-style-type: none"><li>• Blackboard queries</li><li>• Training on how to use the Library</li><li>• Software</li><li>• Finding and using print and online information resources</li><li>• Information on Library and IT Services</li></ul> |
|---|--|

You can also contact the service by emailing [servicedesk@nuigalway.ie](mailto:servicedesk@nuigalway.ie) or by calling 091 493399.

### **Students' Union Shop**

The Students' Union operates a general shop on campus adjacent to the Bookshop. Opening hours are 8.30 a.m. – 4.00 p.m., Monday to Friday. A wide range of student stationery, writing materials and confectionery is on sale, as well as distinctive products bearing NUI Galway crest/colours including sweatshirts, t-shirts, ties, scarves, etc. (These items can also be purchased in Áras Fáilte/Information Office located in the Quadrangle building).

### **Restaurant Facilities**

With 16 restaurants/café's on campus, ranging from contemporary café's and Fairtrade coffee/tea houses to an extensive food hall and café bar, there is something to suit all tastes at NUI Galway! View the full list of facilities please refer to our [website](#).

### **Gym/Sports Facilities**

Students will have access to the [Kingfisher Sports Centre](#). A membership rate of approximately €45 for one month's membership is charged for accessing the sports centre. This facility includes a 25 metre swimming pool, state of the art gym, saunas and steam room. Details of student rates will be provided at registration.

# Getting Started with Blackboard

## For Students

Log into Blackboard at  
<https://nuigalway.blackboard.com>

## 1. Getting Started with Blackboard

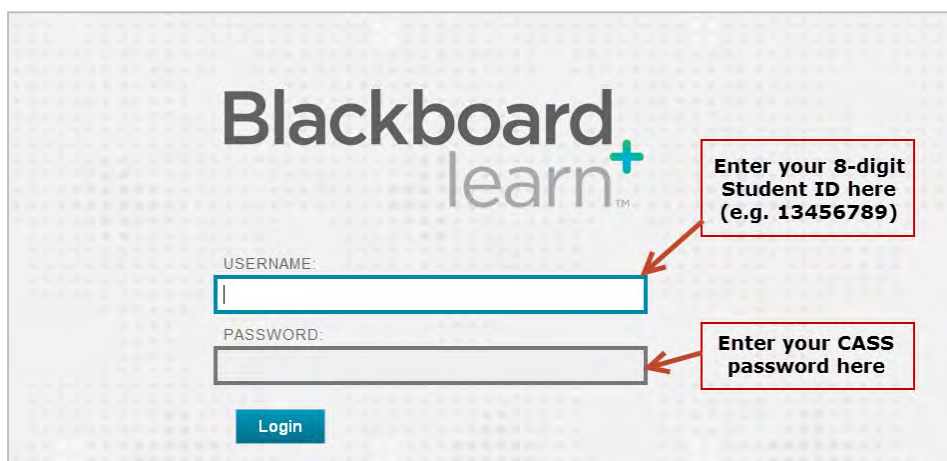
Blackboard is a Virtual Learning Environment (VLE). A virtual learning environment is a web-based application designed to facilitate lecturers in the management of modules for their students, especially by helping lecturers and learners with course administration. They are used to supplement face-to-face lectures and tutorials.

Blackboard is the VLE in use at NUI Galway. It allows students to download lecture notes, reading lists, assessment information and other course-related material from their Blackboard sites. It also contains functions that enable students to interact via class announcements, email, discussion boards. It's easy to upload any materials (e.g. Word files, PowerPoint slides, PDFs, etc) and to create simple quizzes, arrange for electronic submission of course work by students, establish online discussion areas, etc.

Not all academic staff will use Blackboard to support their face-to-face teaching.

## 2. Logging In

Students can access Blackboard by going to <https://nuigalway.blackboard.com> and logging in using their CASS username (Student ID in the format 0000123) and password.

The image shows the Blackboard login interface. At the top, the 'Blackboard learn+' logo is displayed. Below it, there are two input fields: 'USERNAME:' and 'PASSWORD:'. The 'USERNAME:' field is highlighted with a red box and an arrow pointing to it from a text box that says 'Enter your 8-digit Student ID here (e.g. 13456789)'. The 'PASSWORD:' field is highlighted with a red box and an arrow pointing to it from a text box that says 'Enter your CASS password here'. Below the password field is a blue 'Login' button.

### What if I have no courses after I log in?

You will automatically see any modules on which you are registered after you log in. Some may be listed as “unavailable”. This simply means that your lecturer isn't using Blackboard for this course, or hasn't made it available to students yet.

### What if I cannot log in?

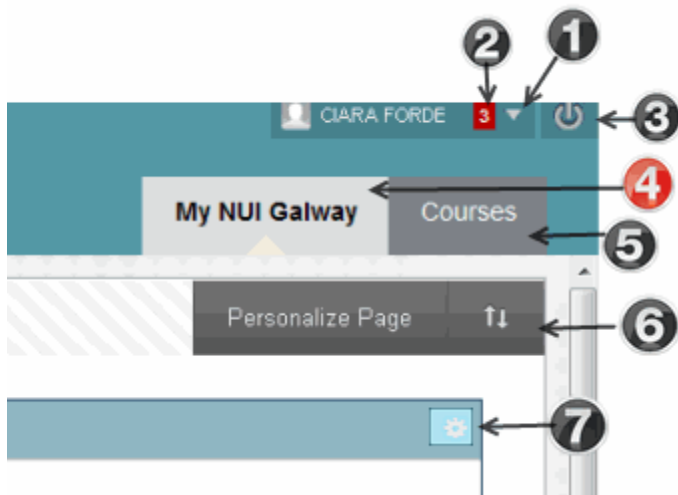
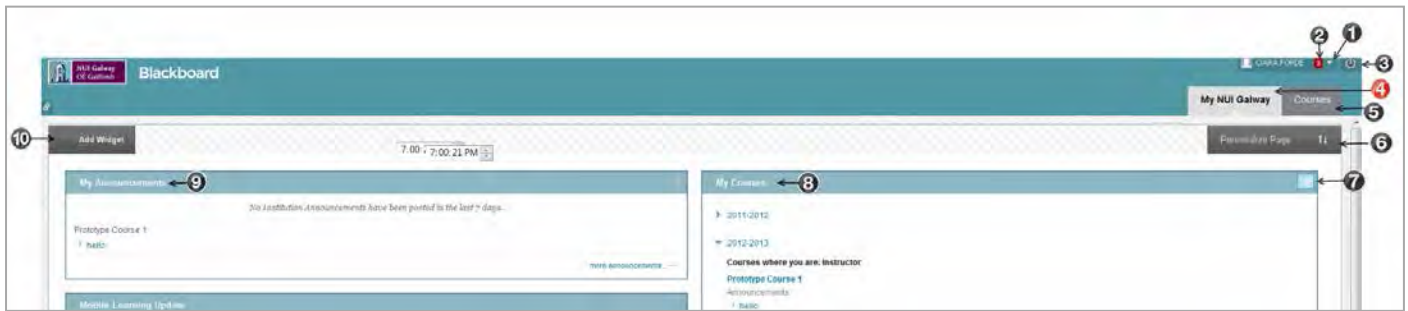
If you cannot log in, please check that you have registered for the current academic session with the university. If you are not a registered student in the current year, you will be unable to access Blackboard. Blackboard is integrated with the Student Records System (Quercus). Each evening the Student Records System sends data to Blackboard enrolling all registered students on their corresponding Blackboard courses. After this time, registered students will be able to log in to Blackboard and access the system.

If you cannot log in, please check that:

1. You have the correct username and password. To log in you will need your correct Student ID number (eight digits) and the password you would use to access your NUI Galway email and all computers on campus. If you do not know this information, contact the User Support Centre in ISS ([servicedesk@nuigalway.ie](mailto:servicedesk@nuigalway.ie) or 091 495777)
2. You have registered for the current academic year with Admissions. All information concerning registration for the academic session 2011-2012 is posted on the Registration Website at [www.nuigalway.ie/registration](http://www.nuigalway.ie/registration)

1.2 Navigating inside Blackboard After logging in there are two tabs on the Blackboard system. Take some time to explore these areas.

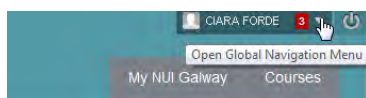
## 2 The Blackboard My NUI Galway Page



1. **Global Navigation Panel** – provides access to the users profile and communication for the entire users course portfolio
2. **Number** – displays the number of new items relevant to the entire users course portfolio, such as new posts, grade results etc
3. **Logout Icon** –click here to logout of Blackboard
4. **My NUI Galway**- the home page tab for Blackboard, click on this tab at any stage to return to this home page
5. **Courses** – tab which lists all of your courses and the instructors on each course
6. **Personalise Page** – enables you to change colour themes to Blackboard
7. **Settings** - provides options to manage courses such as: hiding old courses from your home page and grouping courses by year
8. **My Courses** –displays all the courses which you are enrolled in
9. **My Announcements** –all your course and institution announcements are displayed here
10. **Add Widget** – button to add optional “boxes” that include content, links or tools used to personalise your page.

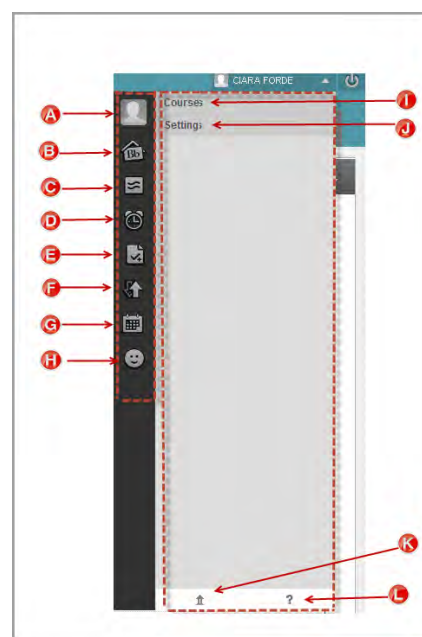


### 3 The Global Navigation Panel



Click on the drop down arrow beside your name. This menu opens up the Global navigation Panel

- A. The **Person** icon enables you to edit your profile/ upload your picture.
- B. The **Bb** home icon expands the Bb home menu.
- C. **Posts Page**- displays the latest posts in your courses; discussion boards, wikis blogs and journals.
- D. **Updates Page**-lists all notifications for every course that you are enrolled in.
- E. **My Grades Page**-only available to students displays the users' grades.
- F. The **Retention Centre** is an instructor only tool used to monitor student engagement. Alerts are displayed to highlight inactivity by students.
- G. The **Calendar** tool shows events for all courses.
- H. The **People** (Smiley) icon shows all Blackboard users.
- I. The **Courses** menu displays all your courses.
- J. The **Settings** menu enables you to change settings.
- K. The **Home** icon links to your Blackboard home page.
- L. The **Help** icon links to the Staff support page.



#### 3.1 The Person Icon/Updating your Profile

You can update your profile by clicking on the **Person** Icon

This enables you to upload your picture/avatar image and set privacy options of who you would like to read your profile

Edit My Blackboard Profile

Cancel
Submit

✱ indicates a required field.

Start with information from...

Facebook

Twitter

Picture

Change Picture

✱ How do you want your name displayed in your profile?

Sarah Hughes

What are you studying?

What would you like to share about yourself?

Privacy Options

Anyone in your courses can view your profile card within the course (unless your status is Hidden). These privacy settings control who can search and browse for you on the People page.

[Learn more about profile privacy settings.](#)

☐ **My School (recommended)**  
I want to share my profile with others at my school.

☒ **Private**  
I only want to share my profile with my classmates.

☐ **Hidden**  
I do not want to share my profile.

3

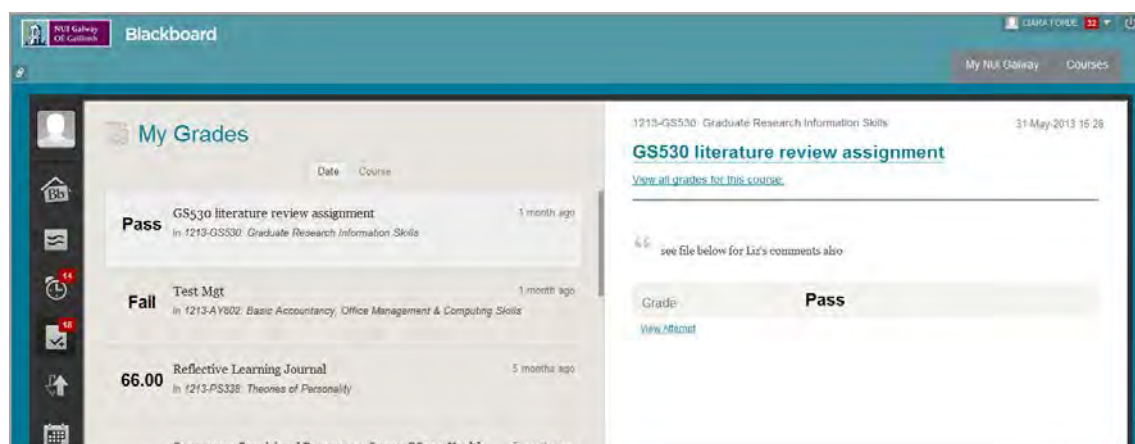
## 3.2 The Bb Home Menu

The Bb Home menu shows the **course communication** for your entire course portfolio. The number indicates how many new items are available.

Click on the Bb home icon to expand the Bb home menu

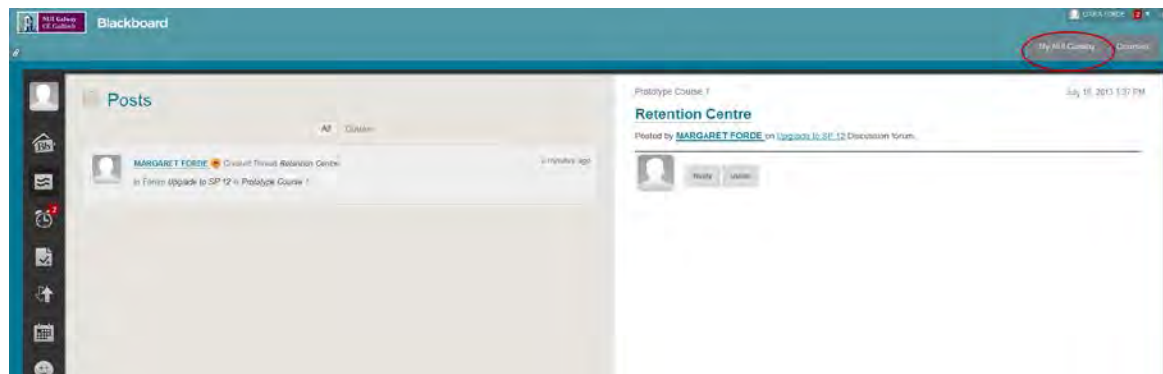


Click on any of the My Grades icon to see details of your Grade Results.



Click on any of the Posts icon for direct access to the Posts panel, you can alternatively navigate to the other pages within the My Bb menu.

To return to the course menu click on the My NUI Galway tab.

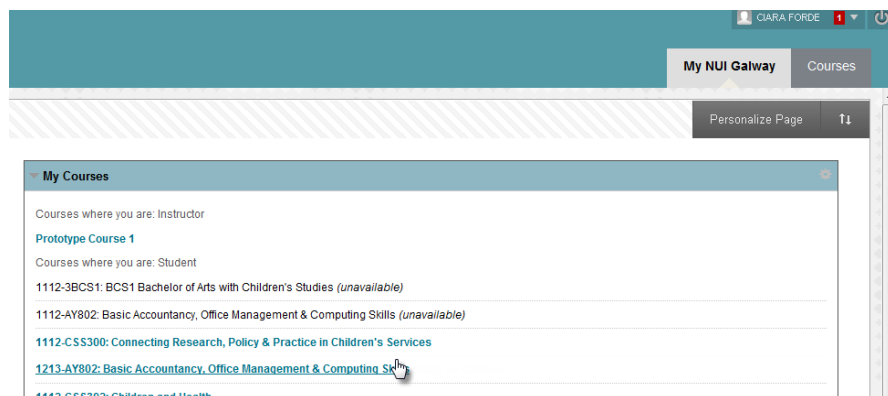


## 4 Getting into Your Courses

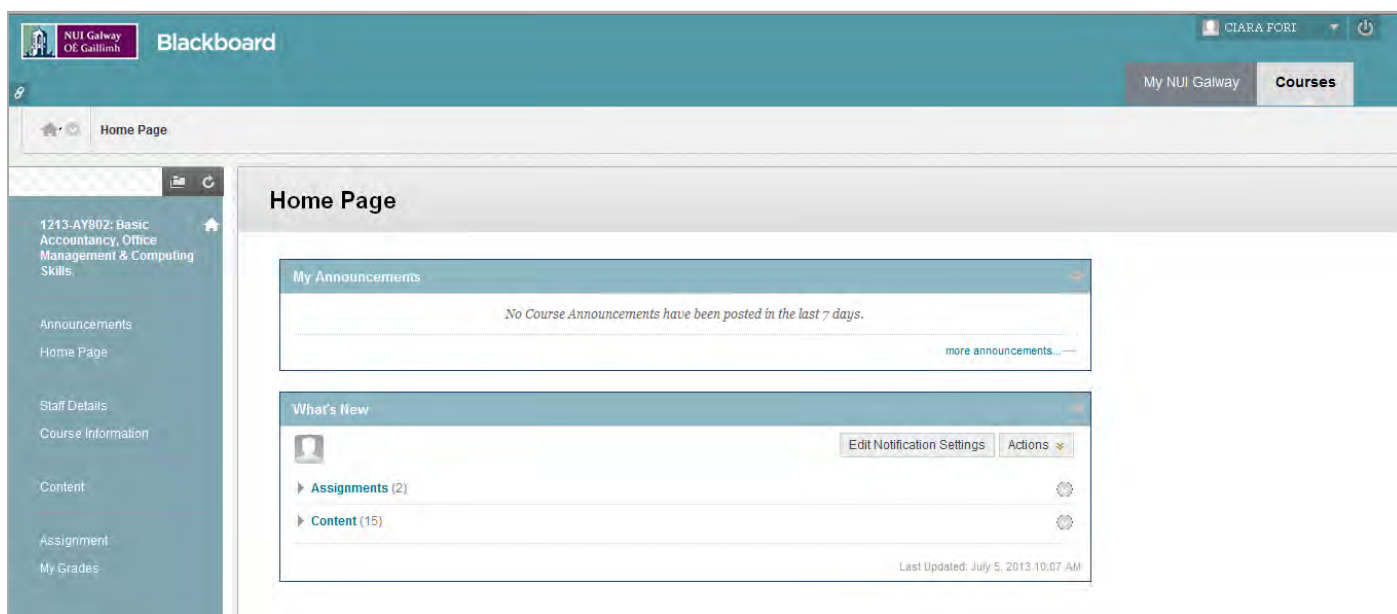
Once you log in you will be in the **My NUI Galway** tab.



From your **My Courses** list, select one of the courses and you will be directed to the **Home Page** of the course



## 5 The Course Interface



### 5.1 The Course Interface Menu

**Home Page** is a course overview for students in your course, encompassing Announcements, Calendar items and Notifications.

**Announcements** is a space where lecturers may post announcements relevant to the course /

**Staff Details** is a space to put your own profile, along with others involved in the course delivery.

**Course Information** is a content area for module information.

**Content** is a content area for Lecture Notes, Assignments, multimedia files and Learning Units.

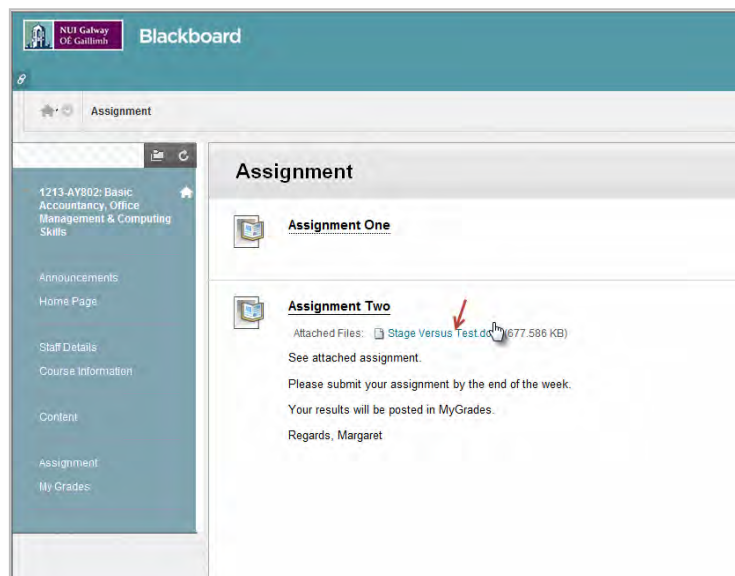
**Assignment** is a content area where assignments will be displayed by the lecturer. Assignments can also be uploaded in this area by the students.

**My Grades** is a link for students to access their course grades.

## 5.2 Submitting an Assignment

### Access the Assignment

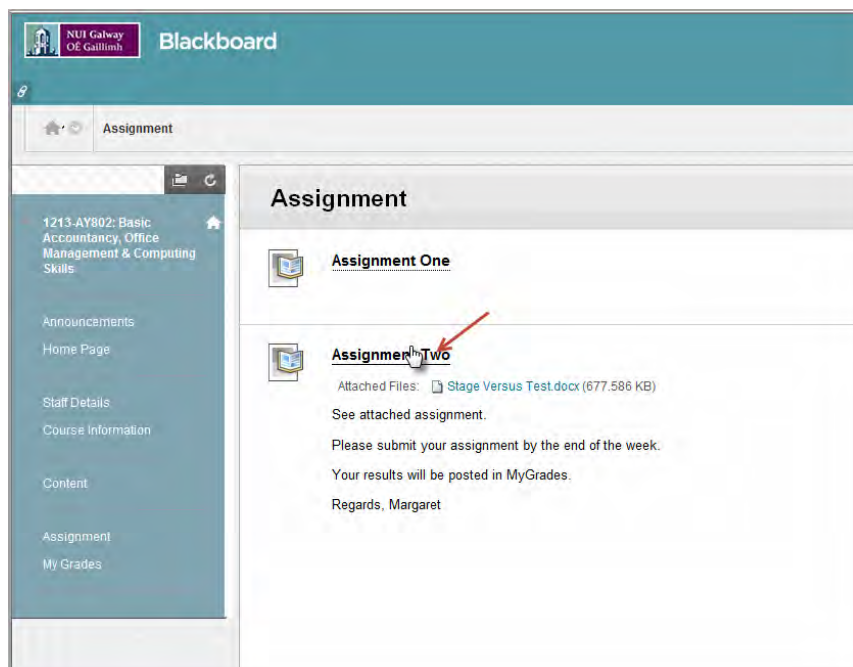
- Your instructor will most likely advise you of the name of the assignment and its location.
- Click on the relevant assignment to read details.
- Your instructor may have added some notes in the window about the assignment such as due date etc




### Upload and Submit the Completed Assignment

From once you have completed your assignment you will need to submit to your instructor.

- Click on the main title of the relevant assignment link, in this example “Assignment Two”




- An assignment submission page is activated with 4 headings.
  - Assignment Information:** shows the assignment description and details.
  - Assignment Submission:** This is where you will submit the assignment.  
Click on the  button to activate the file explorer window.

### 1. Assignment Information

Name Assignment Two

Instructions See attached assignment.

### 2. Assignment Submission

Attach File 

### 3. Add Comments

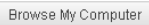
Comments

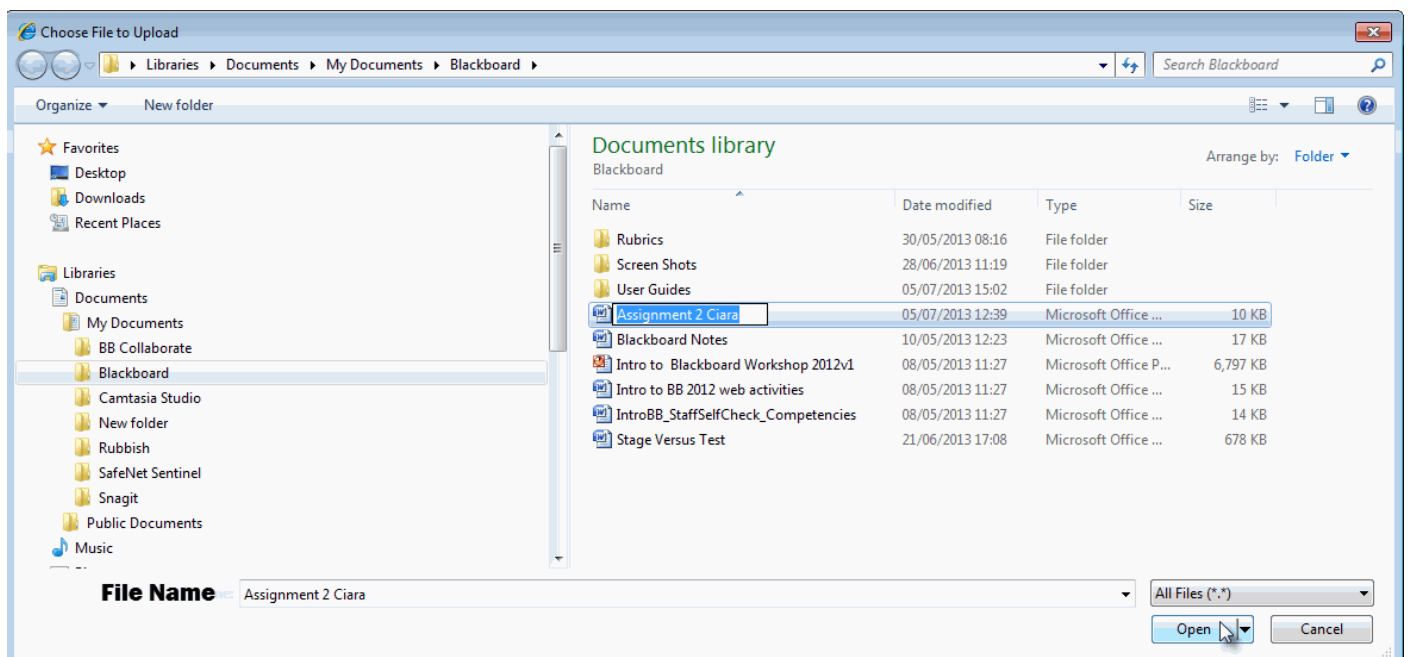
Please see assignment attached

### 4. Submit

*When finished, make sure to click **Submit**.  
Optionally, click **Save as Draft** to save changes and continue working later, or click **Cancel** to quit without saving changes.*

Cancel Save as Draft **Submit**

The  button activates a file explorer window.




Locate your assignment in the file window and select the assignment by placing the cursor on your assignment and click once. The file name should be displayed in the file name box. Now, click on the Open button in the explorer tab.



3) **Comments:** You may add some comments in the Comment window, this is optional.

**1. Assignment Information**  
Name Assignment Two

**2. Assignment Submission**  
Attach File   
Attached files  

File Name	Link Title
 Assignment 2 Ciara.docx	Assignment 2 Ciara.docx

**3. Add Comments**  
Comments  

☒

Please see assignment attached

**4. Submit**  
*When finished, make sure to click **Submit**.  
Optionally, click **Save as Draft** to save changes and continue working later, or click **Cancel** to quit without saving changes.*

4) **Submit:** Finally click on the Submit button to upload the assignment to your instructor.



# NUIGWiFi

**It's easy to connect your laptop to the Internet**

1. Connect to NUIGWiFi wireless network.

2. Open your web browser.

A login page will appear (as seen below)

3. Login with your User ID and Password

User ID is eight characters long e.g.

10012345 for students

0001234s for staff



**NUI Galway**  
**OÉ Gaillimh**

Phone: 091 495 777

University extension: 5777

eMail: [servicedesk@nuigalway.ie](mailto:servicedesk@nuigalway.ie)

Web: <http://www.nuigalway.ie/iss>



# NUIGWiFi

## **Problem: My laptop won't pick up the NUIGWiFi signal**

- Does your laptop have WiFi capabilities?  
Check your laptop manual.
- Are you near a NUIGWiFi hotspot?  
Check the map at <http://www.nuigalway.ie/iss>

## **Problem: I cannot see the login page**

- a. If the login page doesn't load, ensure your browser homepage is a standard <http://URL>  
e.g. <http://www.nuigalway.ie> (not <https://> or other protocol).
- b. If you connect to the NUIGWiFi network but don't log in within 30 minutes, you need to disconnect from the wireless network and re-connect.

## **Where can I find more information about NUIGWiFi and WiFi printing?** <http://www.nuigalway.ie/iss>

## **What's the IP Address of my machine?**

### **WINDOWS:**

Go to the **Start** menu and select **All Programs**.

Click **Accessories**, and then **Command Prompt**.

Type **IPCONFIG/ALL** Under the **WIRELESS** Sections you will see your IP Address listed.

### **MACINTOSH**

Go to the **Apple** menu, then **System Preferences**.

Click on **Network**.

Set the menu to **Show: Network Status**.

Your number will be shown next to **Built-In Ethernet**

-  Main Entrances
-  Restaurant / Cafe
-  Quadrangle
-  Aras na Mac Leinn / Bailey Allen Hall
-  Áras Ui Chathail
-  IT / Orbsen Buildings
-  Arts / Science Concourse
-  James Hardiman Library
-  Arts Millennium Building
-  Áras Moyola
-  Engineering Building
-  Cairnes - School of Business
-  Clinical Science Institute

N6 (Dublin)  
N17 / N18  
& Airport

Quincentenary Bridge

River Corrib

User Support Centre  
Computer Services

Moore Institute

IT Building

Orbsen Building

Arts & Science Building  
Concourse

James Hardiman Library

Arts Millennium Building

Chapel

International Affairs Office  
Counsellors Office

New Entrance

To Corrib Village,  
Biomedical Research Building,  
IDA Business Park,  
Dangan Sportsground,  
Parking,  
& Lifecourse & Society Building

Admissions Office  
Examinations Office  
Fees Office  
Accommodation Office  
Student Contact Centre  
Information Desk

Baily Allen Hall

Áras Ui Chathail

Human Biology Building

Block S

Áras na Gaeilge

Áras de Brun

Siobhán McKenna Theatre

Irish Centre for Human Rights

Huston School for Film and Digital Media

Earls' Island

Cathedral

To Nun's Island  
Adult Education

Martin Ryan Institute

MRI Annex

Information Office

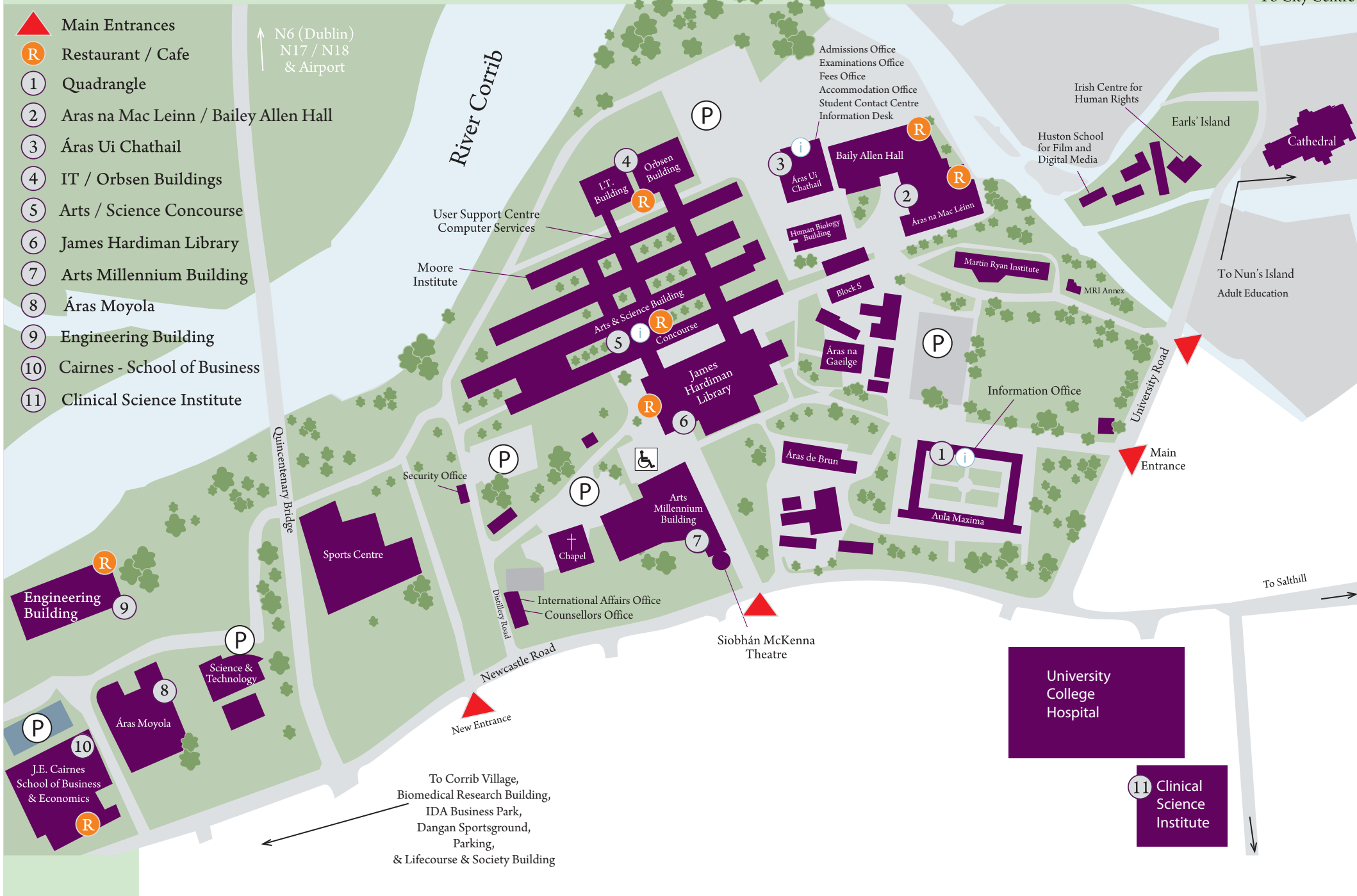
Aula Maxima

University College Hospital

11 Clinical Science Institute

To City Centre

To Salthill







-  Main Roads
-  Secondary Roads
-  Pedestrian Zone
-  Post Office
-  Parking
-  Beaches

## Corrib Village Student Residence

## Bus/Train Station





# Galway Map



Corrib Village



NUI Galway  
O'É Gaillimh



University College  
Hospital Galway



<http://www.nuigalway.ie/international-summer-school/>