



NUI Galway
OÉ Gaillimh

Postgraduate Prospectus 2017

**Bringing
bold ideas
to life**

Research Programmes

Welcome to **NUI Galway**

In the **top 2%**
of universities
in the world

Generations of inspiration

Founded
1845

170

We have been inspiring
students for over 170 years



3,000

international students from

115

countries

Student population of over **17,000**

Ranked in the **top 250***
universities in the world



We have internationally recognised expertise in areas that include Biomedical Science and Engineering, Web Science, Human Rights, Marine Science, Energy and Environmental Science, Applied Social Sciences and Public Policy, and the Humanities, in particular literature, drama and theatre, and Irish Studies.

*In the latest QS rankings (2016).

91% average

(over the last five years) of our
postgraduates are employed
or in further study within six
months of graduating

Taught programme opportunities
are outlined in our taught prospectus,
which you can order online or
download at www.nuigalway.ie/pgp

Internationally recognised unique programmes

NUI Galway has a global reputation in key areas of expertise, and we offer postgraduate programmes in these fields: Biomedical Science and Engineering; Human Rights, Applied Social Science and Public Policy; Energy, Environment and Marine Research; Data Analytics, Physical and Computational Sciences; and Digital Humanities.

Top university for graduate employability

NUI Galway continues to outperform other universities in terms of graduate employment. **91%** (average, over the last five years) of our postgraduates are employed or in further studies six months after graduating (higher than the HEA national average for postgraduates).

€59.7 million annual research income

In the latest financial year, we received €59.7 million in competitive funding across a range of dynamic, innovative research projects.

Important national facilities

Our campus hosts major national facilities, such as the National Centre for Biomedical Engineering and Science, the Irish Centre for Human Rights and the unique Centre for Cell Manufacturing Ireland, the only stem cell manufacturing facility in Ireland.

€400m campus development programme

NUI Galway is investing €0.75 million per week in a ten-year, €400 million campus development programme to provide the best learning environment for you.

Why choose **NUI Galway?**

áras uí argadáin
hardiman building



Ranked among the top 2% of universities worldwide

Global recognition in the university rankings: in Top 250 universities in the world in the latest QS Rankings.

91% postgraduate employability rate

Excellent career prospects and industry partnerships for our students. (91% average based on the last five years).

Over 170 years of tradition and innovation

Inspirational teaching and research at NUI Galway since 1845.

Generous scholarships

Our Hardiman Research Scholarships reward excellence.

Research supports

Our Graduate Studies Office provides information, induction, mentoring and monitoring to support your research.

105-hectare riverside campus

The campus is situated in a spectacular location, close to vibrant Galway City.



The Prospectus for Masters and Diploma courses
is available at: www.nuigalway.ie/pgp

Postgraduate prospectus— research programmes 2017–18

This prospectus details our research postgraduate programmes.
There is an accompanying edition detailing our taught courses.
Please visit www.nuigalway.ie/pgp to order or download a copy.



Contents

Contents

- 2 Why choose NUI Galway
- 6 Our innovative research
- 8 Some research highlights
- 10 An international university
- 12 Commercialising your research
- 14 Investing in your future: campus development
- 16 International postgraduates
- 18 The city on your doorstep
- 20 A supportive environment for research

Research Themes

- 25 Biomedical Science and Engineering
- 33 Informatics, Physical and Computational Sciences
- 39 Environmental, Marine and Energy
- 46 Applied Social Sciences
- 55 Humanities in Context

Research programmes

- 62 Research programme structure
- 65 Our research programmes
- 65 Research programme listings

The application process

- 76 Step 1: Find a supervisor/ PhD project
- 78 Step 2: Funding and scholarships
- 82 Step 3: Apply online
- 86 Postgraduate fees
- 87 Useful links
- 88 Campus map
- 90 Index
- 92 Meet us
- 93 Galway 2020



Important: This hard copy prospectus lists all programmes on offer, at the time of going to press, for entry 2017. Details of new programmes on offer subsequent to the printing of this prospectus will be listed online: www.nuigalway.ie/courses The information contained in this prospectus is, to the best of our knowledge, true and accurate at the time of publication. Any amendments to the published information will be included in the online prospectus. The content of the prospectus is for information purposes only and should not be viewed as the basis of a contract between students and the University.

NUI Galway reserves the right to amend programmes or regulations at any time without notice; we may re-open previously closed programmes to accept applications in the event of programme quotas not being met. The University also reserves the right to withdraw programmes periodically for any reason (e.g., insufficient numbers).

Fáilte Ireland kindly supplied some of the photographs included in this publication. Entries to the student-staff Capture Your Campus photo competition also feature: www.nuigalway.ie/captureyourcampus

Connect with NUI Galway on any of these social media channels



Our innovative research



Research at NUI Galway is forward thinking and global in scale. Today we are leading the field in a wide range of areas, including stem cell and gene therapy research, human rights law, marine and energy research, digital humanities, drama, theatre and performance, and data analytics.

Our research enhances everything we do at NUI Galway. It underpins our courses, drives academic discovery, informs local and

national innovation; it is translational and effects positive societal change. Our top-ranking research centres and institutes are recognised nationally and internationally as centres of excellence.

As an NUI Galway postgraduate, you will become part of a diverse academic community, studying in a dynamic intellectual environment.

Our research supports innovation

NUI Galway is Ireland's most successful university for commercialisation of research, consistently outperforming every other Irish university in terms of technology transfers. Other recent achievements in terms of research and business innovation include:

49 New invention disclosures in 2015

6 Technologies licensed to companies in 2015



€59.7m

Research funding 2015



33

Companies supported in business innovation centre



Five stars for research in QS stars rating



300

Researchers involved in marine, environment and energy research



6 Technologies patented in 2015

57

New R&D collaborations

80%

Of all stents outside North America are made in Ireland: Galway is a medtech industry hub.

1

- **One of five global hubs** for medical device technology
- **Ireland's only** stem cell manufacturing facility
- **Home to** Insight, the National Centre for Data Analytics
- **Republic of Ireland's first** UNESCO chair in children, youth and civic engagement



Some research highlights

Photo taken on the international marine research expedition—Adélie Penguin: Adélie Penguin, *Pygoscelis adeliae*. Image © Alain De Broyer.

Our research is forward thinking and global in scale

NUI Galway researcher on international marine research expedition

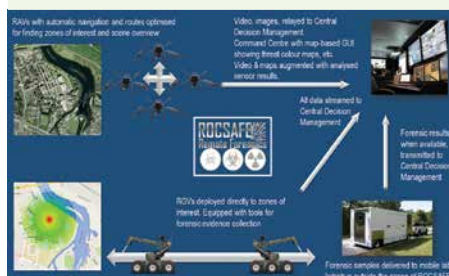
Researcher and Lecturer in Zoology, Dr Louise Allcock, from the School of Natural Sciences at NUI Galway, was part of an international research team on an expedition to the South Orkney Islands in the Southern Ocean. The expedition was carried out aboard the British Antarctic Survey research vessel, *RRS James Clark Ross*. It was led by the British Antarctic Survey and supported by an international team of scientists from nine countries.

Dr Allcock joined the expedition as an expert in both deep-sea ecology and Antarctic octopuses. Dr Allcock said: "There are striking similarities between these deep Antarctic habitats and deep-sea habitats in Irish waters. Discovering more about these ecosystems is fundamental in making sure these beautiful complex habitats are protected."

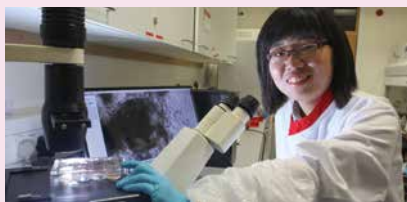
The international team surveyed the seafloor around the South Orkneys, identifying species and investigating the communities of animals that are found there. Scientific highlights included the discovery of numerous new species, rare animals such as pelagic sea mosses, and a 'graveyard' of the plates of long-dead giant barnacles.

International engineering ICT project awarded €4.8 million in EU funding

A team led by NUI Galway has been awarded €4.8 million in Horizon 2020 EU funding for their project ROCSAFE (Remotely Operated CBRNe Scene Assessment & Forensic Examination), which uses robotics and intelligent reasoning to gather forensic evidence in the event of a chemical, biological or nuclear incident. ROCSAFE's overall goal is to fundamentally change how CBRNe (chemical, biological, radiological and nuclear defence events) are assessed, and ensure the safety of crime scene investigators by reducing the need for them to enter dangerous scenes to gather evidence.



Stem cell breakthrough will generate heart tissue in the lab



Dr Min Liu, post-doctoral researcher in Stem Cell Biology, is working with CÚRAM and REMEDI on stem cell research that may lead to understanding and treatment of heart disease and sudden death in young children.

In a first for Ireland, biomedical researchers (including Dr Min Liu, pictured) from our Regenerative Medicine Institute (REMEDI) and CÚRAM, in collaboration with clinicians from Our Lady's Children's Hospital Crumlin, have developed synchronised beating heart cells from human pluripotent stem cells made from skin biopsy. This ground-breaking research aims to investigate the causes of unexpected sudden death from inherited cardiac conditions in young people, and to help test therapies that may reduce the risk of sudden death in survivors and relatives.

NUI Galway and the Gate Theatre to digitise the Gate's archive

NUI Galway and the Gate Theatre, Dublin, announced in May 2016 that a new digitisation project will be a major resource for theatre researchers, scholars, and artists. It will be exclusively available at our Library, where users will be able to access hundreds of videos, scripts, show programmes, and many more treasures from the Gate's history.

Patrick Lonergan, Professor of Drama and Theatre Studies, said the Gate Theatre project will have a transformative impact on Irish theatre research. "The Gate is one of the major European theatres, and has played an enormous role in the development of our theatrical culture, especially in the areas of design, direction and acting, but also in playwriting. This archive will allow our researchers and students to learn from these achievements and, we hope, to build on them into the future as well."

Launch of new research institute: ILAS (Institute for Lifecourse and Society)

With the recent establishment of the Institute for Lifecourse and Society (ILAS), NUI Galway marked a concerted commitment to the application of knowledge in the social sciences in order to share knowledge and create positive social change.

The Institute brings together over 150 academics, staff, researchers and doctoral students. Its mission is dedicated to supporting research that informs policy development and practice to make a positive difference to people's lives.

Located on our north campus, this building represents a capital investment of €9 million, comprising significant philanthropic contributions from The Atlantic Philanthropies and Galway University Foundation to create a state-of-the-art research hub.



ILAS Building

NUI Galway

An international University

For over 170 years, NUI Galway has been welcoming students and researchers from all over the world. This tradition means that you will be joining a university with:

- An international reputation for teaching and research
- A commitment to investing in your future by enhancing your learning environment
- Strong business and industry links, which give you greater opportunities to build your career
- Top quality teaching facilities and opportunities for applying your knowledge in a real-world setting.

NUI Galway's global community

We have research links with Georgia Tech, Harvard University and Stanford University in the US, the University of Cambridge, Imperial College London and the University of Edinburgh in the UK, Kyoto University in Japan, and Tsinghua University in China, to name but a few.

NUI Galway has an academic community of world-leading researchers working at the forefront of their fields. With extensive worldwide partner institutions, NUI Galway offers you opportunities to collaborate internationally through its postgraduate programmes. As part of your course, you may have the opportunity to travel or be part of a virtual global team.

**3,000
international
students from
115 countries**

**Collaborations
in 106 countries**



Top rating of five stars in the QS Stars International rating



TOP 200

NUI Galway moved into the Top 200 list of the most international universities in the world in the Times Higher Education (THE) World University Rankings 2015–2016.

Ranked in the top 2% of universities globally: in Top 250 universities in the world in the latest QS Rankings.



Partnerships with 2,792 research institutions worldwide

Ranked third of the Irish universities in international rankings



Highest ranking

Has the highest ranking in a number of areas, including Arts graduate employment, internationalisation, and internships, in U-Multirank.

Commercialising your research

“At Pocket Anatomy, doctors are calling our award-winning mobile software solution ‘the Google Earth of the human body, helping patients visualise their health conditions’. Pocket Anatomy is based on campus in the NUI Galway Business Innovation Centre. The centre has provided our company with world-class supports in facilities, expertise and industry links that have been pivotal in driving this start-up forward. NUI Galway, for us, is a great place to be.”

Mark Campbell

CEO & Founder of PocketAnatomy.com

NUI Galway graduate (BComm with French)

NUI Galway's research community is a vibrant and inquisitive network. There are hundreds of great minds, who are helping to shape the future through research and discovery. As a research graduate, you could become part of this dynamic community. Our researchers are advancing many fields, including sustainable sources of energy, improving human health through new treatments for cancer, tackling climate change and developing more tangible outputs, such as improving ways to process plastic electronic components, ensuring effective and error-free data analysis.

Bringing your research to the next level

Understanding and communicating the position of your research and potential impact is the key first step on the commercialisation journey. This draws upon your experience and excellence in your academic environment and also on what is happening in the commercial world. The Technology Transfer Office (TTO), through its extensive commercial experience and network of industry experts, patent agents and legal experts, is here to support you in commercially exploiting your research outputs for the benefit of the University and the wider community.

As well as intellectual property management, the TTO promotes a strong culture of entrepreneurship and innovation, equipping students with the required skillset to exploit commercial opportunities in their future careers. An experienced team is in place to guide you through the best commercialisation route, whatever path you choose.

NUI Galway is
home to hundreds
of great minds,
who are helping
to shape the future
through research
and discovery.

Services and supports

TTO offers many services and supports, including:

- Managing university intellectual property and technologies to achieve commercial outcomes
- Encouraging the establishment of start-up companies, supported by entrepreneurship programmes. NUI Galway, in terms of technology transfer and its commercial activities and achievements, continues to perform highly in relation to every other Irish university. The TTO guides breakthrough research towards business reality.
- Establishing partnerships with industry to facilitate collaborative research projects
- Managing the Campus Innovation Centre and Bioincubation facilities, home to 33 companies
- Delivering policy, processes, guidelines and skills development for researchers
- Building on new business partnerships of investors, angels and management teams for NUI Galway commercialisation activities

Rewards

The TTO brings together specialists in knowledge transfer and business development, partnering with investigators and enterprise to translate innovations into practical outputs. Liaising with the TTO offers many rewards for those keen to pursue commercially-focused research. The office provides training to help identify the intellectual property and practical applications of research. Some become inventors of a technology which then may be licensed to a company or, indeed, form the basis of their own start-up company. For those looking to start up a company, the TTO offers facilities in the NUI Galway Business Innovation Centre of benefit to any new company. Start-ups are provided initial supports to enhance the new business growth of the company. The Business Innovation Centre has been a hive of activity, with an average of five new companies joining every year. The TTO supports researchers in bridging the gap between basic research and commercialisation. This is achieved through education and communication, and via NUI Galway-run entrepreneurial programmes, workshops and industry open days, and the team's experience in the commercialisation space.

www.tto.nuigalway.ie

Investing in your future

Campus development

Attractive riverside 105-hectare campus

Green walkways

through the campus
and into the city



Our waterways

ensure that
sports like rowing, kayaking and surfing
are popular student activities.



Get from one side of the campus to the
other by **bicycle** or via **shuttle bus**.



Self-contained and compact

You can take a ten-minute riverside stroll that
links the north and south campuses.

Pedestrian bridge

A convenient link between
the University and city



Ireland's fastest expanding campus

The Life Course Building
houses the multidisciplinary
Life Course Institute.

Clinical/Translational Research Faculty (due to open late
2016) is unique in Ireland, and will house basic, translational and clinical research
teams on the site of University Hospital Galway, adjacent to the main campus.



Ireland's Largest
School of Engineering



New 8,000m²
Biomedical Science Building

New **Sports Centre**
and Swimming Pool



Purpose-built **auditorium** and
student cultural venue

The Arts, Humanities and Social Sciences Research Building, adjacent to the
James Hardiman Library, integrates **research and teaching**.

A green campus

One of the **lowest levels** of **energy consumption** in the higher education sector in Ireland, and boasts the ISO 50001 standard for energy management



We convert waste cooking oil to **biodiesel** to fuel University vehicles.

We generate more than 25% of our electricity needs  from our own combined heat and power plants (mini electricity generating stations).

We are investing **€0.75 million** in our campus every week to create the best facilities for you.



International postgraduates

Over 3,000 international students from 115 countries are enrolled at NUI Galway.

Admissions information

NUI Galway has many years' experience in assessing international applicants. Admission to a research-based Masters or PhD programme is at the discretion of the academic supervisor and the relevant College of the University. An honours level Bachelor degree with good grades is normally the minimum requirement to be considered for admission. Please see page 80 for information on how to apply. Applicants whose first language is not English, or who have not been educated through the medium of English during their two most recent years of study, must present one of the following qualifications in the English language.

All Colleges	IELTS*	TOEFL	Pearson PTE
All programmes*	6.5	88	61

*All programmes (except Medicine): No less than IELTS 5.5 in any component.
Medicine: No less than IELTS 6.5 in any component.

Language tests must be undertaken no more than two years prior to commencement of your programme at the University.

NUI Galway provides pre-sessional English language courses for students who do not meet the English language requirements. Contact the International Affairs Office, NUI Galway, for further information.

Funding

Many of the research centres offer scholarships to high achieving researchers. International research students should refer to the websites of the various research centres and/or colleges of the University to explore funding opportunities. International students can also apply for funding from external funding bodies, such as the Irish Research Council for Science, Engineering and Technology (IRCSET), Science Foundation Ireland (SFI), the Royal Irish Academy (RIA) and the Environmental Protection Agency (EPA).

Support services for international students

The International Affairs Office organises a comprehensive orientation programme for all new international students at the beginning of term. Orientation includes campus tours and library tours, as well as introductions to the wide range of other support services available to all students, such as campus services and facilities, accommodation, health, disability support, student counselling, chaplaincy and student sports clubs and societies. Orientation is also attended by representatives of the Garda National Immigration Bureau (GNIB), which advises non-EU students on registering with the local immigration office.

Immigration regulations

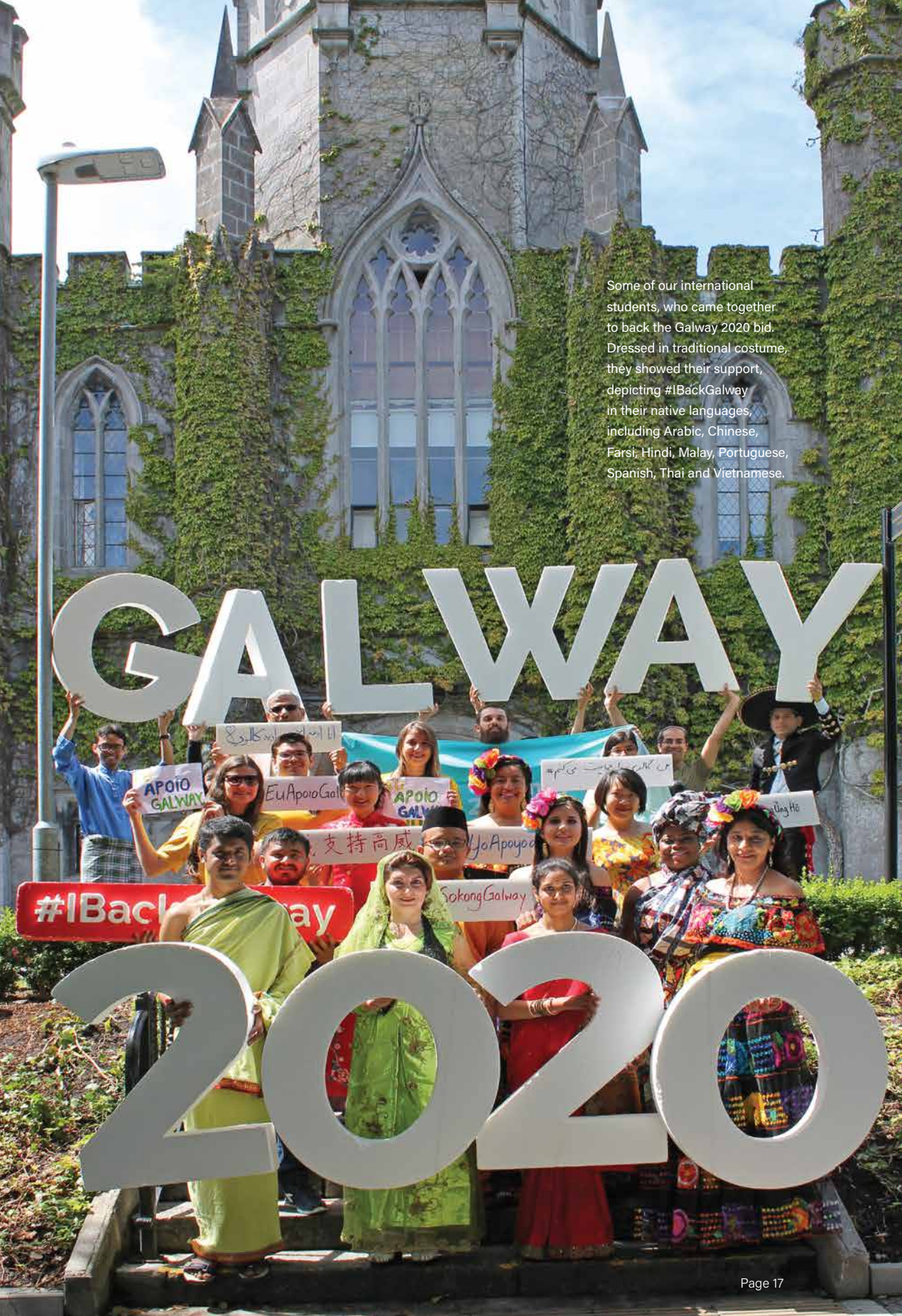
Non-EU/EEA students who require a student visa should apply to the Irish Naturalisation and Immigration Service as soon as they receive their Letter of Acceptance from NUI Galway.

All non-EU/EEA nationals are subject to immigration control at the point of entry to the Irish state. You, therefore, should ensure that you have your NUI Galway offer letter available to show to immigration officials to prove that you are entering the state with the intention of pursuing a course of study in Ireland. Your passport will then be stamped, noting your reason for entering the state, i.e., to study.

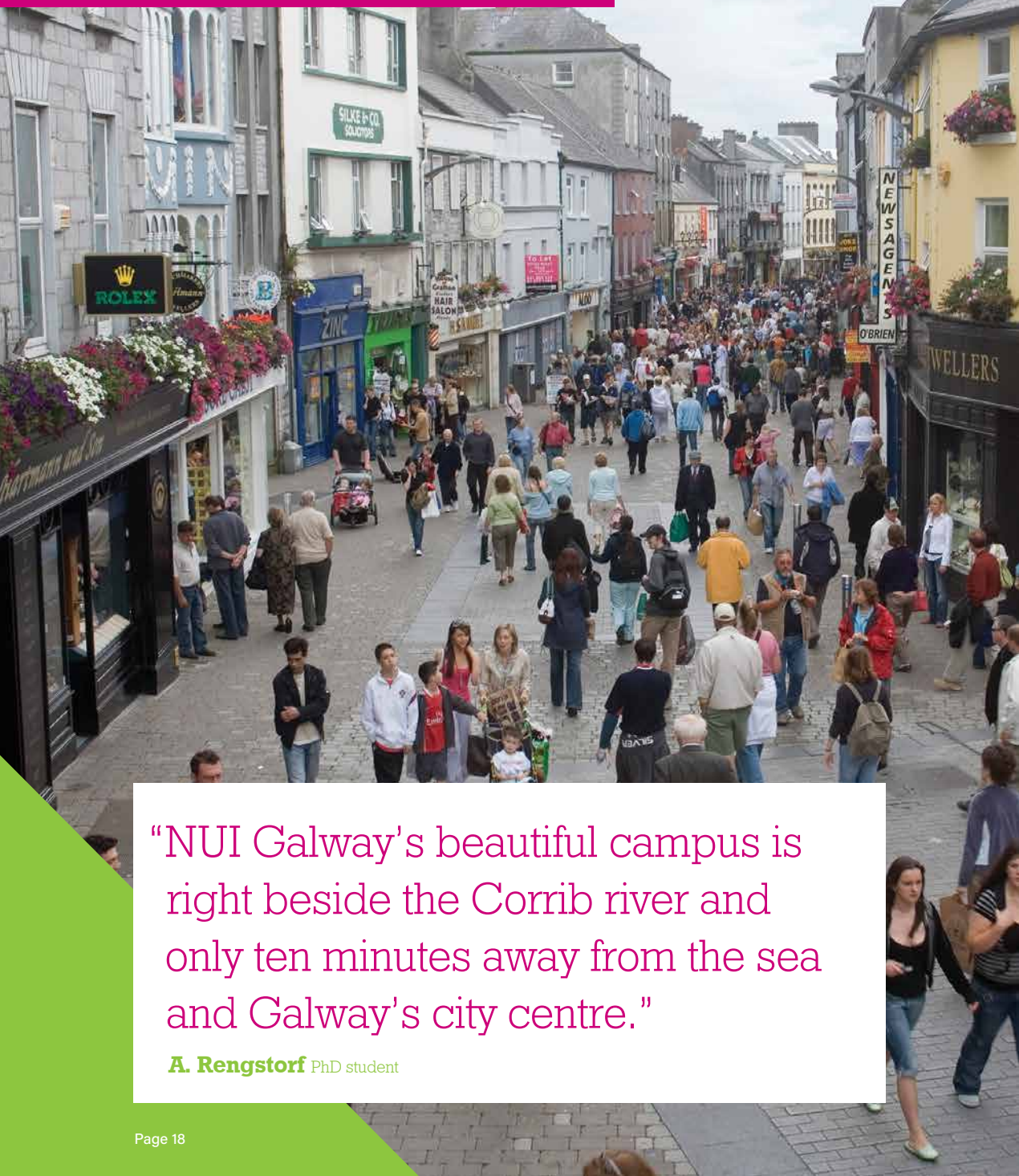
Non-EU/EEA citizens are also required to register with the Garda National Immigration Bureau (GNIB) within 30 days of arriving in Ireland. Further information is provided to students by the International Affairs Office upon arrival at NUI Galway.

For more information, please visit the *Before You Arrive* section of the university website: www.nuigalway.ie/internationalstudents/prearrival.html

Some of our international students, who came together to back the Galway 2020 bid. Dressed in traditional costume, they showed their support, depicting #IBackGalway in their native languages, including Arabic, Chinese, Farsi, Hindi, Malay, Portuguese, Spanish, Thai and Vietnamese.



The city on your doorstep



“NUI Galway's beautiful campus is right beside the Corrib river and only ten minutes away from the sea and Galway's city centre.”

A. Rengstorf PhD student



- European Capital of Culture 2020
- *“European City and Region of the Future”*, awarded by fDi Magazine (a Financial Times publication)
- *“Best Overall Micro City in Europe”*—fDi Magazine
- Recommended as a travel destination by New York Times Travel Magazine (March 2016): *36 Hours in Galway*
- Candidate for *“European Region of Gastronomy 2018”*
- UNESCO *“City of Film”* (only five such cities in the world)
- European Green Leaf Environmental Award Winner, 2016

Galway, on the edge of the Atlantic, is an exciting place to be for a postgraduate student. It is one of the largest cities in Ireland, and is one of the fastest growing cities in Europe. The University is in the heart of the city centre, with all amenities within walking distance—and a bridge that connects the campus to the city makes the journey even shorter.

Galway has everything—shopping facilities, theatres, restaurants, music venues, culture and sports facilities—but it is also small enough to get to know people easily and to keep in touch with your friends. This sense of community is one of the features of Galway life that our students love most. It is home to a number of festivals, sporting, and cultural events including: Galway International Arts Festival, Galway Races, Film Fleadh, Cúirt Literary Festival, and the Comedy Festival.

Students make up 20% of the population of the city, which is why it is such a youthful, energetic place. It is an affordable city, e.g., the cost of living in Galway is 26% cheaper than Dublin (source: www.expatistan.com). A medieval city, Galway is also steeped in history and culture and is a beautiful, vibrant place to live and study in.



A supportive environment for research



Library research support

Library staff will be delighted to give you any assistance you need to find your way around our collections, whether print or online. The Research and Learning team consists of Academic Skills Librarians, Academic Skills Assistants, a Research Librarian, Special Collections staff and Archivists. They offer training and skills programmes to students, staff and researchers. The Research Support Librarian will offer you specialist expertise and advice to support your research process, including advice on systematic reviews, research performance measurement and maximizing exposure. The Academic Skills Assistants offer an advanced enquiry service both online and face-to-face.

The Special Collections staff will assist you in making the best use of our Special Collections and the Archivists provide one-to-one support and training to help make the most of our Archival Collections. The Academic Writing Centre provides one-to-one support and assistance with academic writing. The Library and IT Service Desk will help you make the most of both Library and IT services.

A structured PhD generic skills module worth 5 ECTS credits on Graduate Research Information Skills is available. This is aimed at enabling students to acquire and develop a range of research skills in order to successfully complete fourth level research.

Digital scholarship

The Library offers a growing range of services and activities related to digital scholarship. These are a component of our contribution as partners in larger cooperative projects, and they may be of assistance to individual researchers.

Services available to postgraduates include:

- Publication and discovery services for your completed research
- Management and hosting of your completed research data
- Subscription to identifier services for you, your publications and your data via ORCIDs, Digital Object Identifiers, handles and DataCite DOIs
- Digitisation services, including high-quality self-service facilities and mediated facilities for mass digitisation, for appropriately funded projects
- Long-term preservation services for appropriately funded projects. Metadata services for digital materials description, discovery and linking may also be able to help with text processing, data transformation, OCR and related technologies to get you started on your project.

Unique archives

The James Hardiman Library holds unique archival and special collections, dating from 1485 to the present. The world-class facilities, including a newly built 36-seat reading room and dedicated exhibition space, make the Hardiman Library a hub for research, learning and showcasing innovation. Archives offer researchers unique value in terms of doing original research. Our collections are expanding and, in conjunction with the Digitisation Centre in the Library, many key collections are more accessible. These include the following:

Digital archives

In 2012, a unique partnership was developed between NUI Galway and the Abbey Theatre to digitise the Abbey Theatre Archive, the largest theatre digitisation project in the world. Digitised content from the Abbey archive is now being made available. NUIG and the Gate Theatre are now collaborating on a project to digitize the theatre's archive, which will be exclusively available in NUIG in 2018. Other major digitisation projects include that of An Chartlann Éamoin de Buitléar, and the Tim Robinson and Brendan Duddy Collections.

Theatre and literary collections

These collections include the John McGahern archive, Druid Theatre archive, Galway Arts Festival collection, as well as holdings relating to the Lyric Theatre, Belfast, Thomas Kilroy papers, Taibhdhearc na Gaillimhe, the Huston Family, Eoghan Ó Tuairisc, Joe Burke, Arthur Shields and Siobhan McKenna papers.

History, political and conflict collections

These collections include papers relating to the period of "The Troubles" in Northern Ireland as well as international human rights issues, including the archives of Brendan Duddy, the Ruairí Ó Brádaigh papers, Galway Civic Records, O'Connor Donelan, Michael Cusack, and Ritchie Pickow, and the papers of Professor Kevin Boyle.

Landed estate collections

Relating to a number of estates in the west of Ireland, including legal, estate management, and family and personal information.

Irish language and literature collections

Featuring material from Conradh na Gaeilge, the Tadhg Seoige papers and Lámhscríbhinní Dubhghlas de hÍde.

Special collections

Complementing our archives is a wide range of Special Collections acquired since 1849, which are available for consultation from the Archives and Special Collections Reading Room.

These include maps, newspapers, rare and antiquarian books, theses, and University and Bealoideas collections. Particular strengths include travel literature pertaining to Ireland in the 18th and 19th centuries, Irish language material, Irish folklore and devotional literature.

Researchers have access to a 36-seater Archives and Special Collections Reading Room.



www.library.nuigalway.ie
E: library@nuigalway.ie
T: +353 91 493399



Research themes



Our researchers are shaping the future. Be inspired, be part of it.

NUI Galway is committed to world-class research and creating new knowledge in key areas across science, engineering, medicine, the social sciences and the humanities.

Our strategic focus is on five key priority areas:

- Biomedical Science and Engineering
- Informatics, Physical and Computational Science
- Applied Social Sciences and Public Policy
- Environment, Marine and Energy
- Humanities in Context

There are hundreds of great minds at the University who are helping to shape the future through research and discovery. The following sections provide you with some information of the scale and size of research that is currently underway at NUI Galway. As a postgraduate student, you could become part of this research. You could help advance sustainable sources of energy, improve human health through new treatments for diabetes and cancer, change public policies to improve human welfare, or promote the creative industries through research on our culture, language and heritage. The scope of our research here at NUI Galway is far reaching. You can join us and help us shape the future for the better.

NUI Galway has a growing international profile for its research in five key areas.

Research matters—join us in changing the world.



Biomedical Science and Engineering

Advancing medicine through discovery

NUI Galway is recognised globally as a leading centre for biomedical research and enterprise. Through a spirit of discovery and delivery, NUI Galway seeks to advance the boundaries of biomedical research and contribute to the international scientific community's quest for knowledge. Our researchers focus on some of today's most significant global medical challenges, including cancer, cardiovascular disease, diabetes and neurodegenerative diseases. Our important research develops new technologies and therapies for patients. This mission has been greatly enhanced by a recent move to a brand new, state-of-the-art bioscience research building adjoining the campus in Dangan. The medical device industry in Ireland is a thriving sector, with Galway at its hub: Galway is one of five global hubs in a medtech market worth €95 billion in the EU.



The Biomedical Science Building

National Centre for Biomedical Engineering Science

NUI Galway is Ireland's leading university for Biomedical Science and Engineering, and home to the National Centre for Biomedical Engineering Science (NCBES). Biomedical Science and Engineering transforms biomedical sciences research, such as basic translational research into clinical applications. It brings together scientists, engineers and clinicians, who develop innovative solutions to meet current medical challenges. Our multidisciplinary researchers focus on “real-world research”, ensuring their research advances biomedical knowledge and develops therapeutic treatments.

Research areas

Medical Devices & Connected Health

NUI Galway's research in this area fits well with the Irish industry sector. Ireland already boasts the leading cluster of medtech industries (including life sciences and medical devices) and employs 25,000 people in this sector. Ninety percent of the world's stents are made in Galway city, and research supports this thriving industry. Our medical devices research involves joint collaborative projects that focus on cardiovascular and musculoskeletal rehabilitation and neural bioelectronics research. The objective of our connected health research is to move health care from the hospital and clinic into the day-to-day lives of patients, using mobile technology, computers, networked devices and remote monitoring tools.

Research centres in this area include the following:

- The **Biomechanics Research Centre** investigates engineering mechanics and biology in the cardiovascular, pulmonary and orthopaedic areas, and also researches cardiovascular medical device analysis and design.
- **CÚRAM**—The SFI Centre for Research in Medical Devices is a national research centre advancing R&D in the medical device sector. Supported by SFI and industry partners, CÚRAM integrates world-class academic, industry and clinical partners to address unmet clinical needs. As a postgraduate student at CÚRAM you will have the opportunity of working with high-calibre experts in the medical device field, as well as having access to a top-quality education and professional development programme.
- **Regenerative, Modular & Developmental Engineering Laboratory (REMODEL):** The life cycle of multicellular organisms is a well-orchestrated sequence of developmental processes, such as information transfer, growth and differentiation. Tissue and organs are highly sophisticated, three-dimensional structures that are built in a modular fashion with extraordinary precision. Tissue engineering and regenerative medicine combines principles of engineering, chemistry, biology and medicine to assemble three-dimensional functional

structures to treat, augment or replace diseased and / or injured tissues, organs or functions of the body. REMODEL aspires to achieve the highest level of regenerative biomimicry by recapitulating nature's elegant and meticulous developmental and modular processes. REMODEL operates at the forefront of scientific research and technological innovation to generate new knowledge, technologies, tools and discoveries that will improve human lives. Current programmes at REMODEL include development of biomimetic, biofunctional biomaterials; advanced therapy medicinal products; modular organogenesis; and in vitro pathophysiology models.

- Bioelectronics is another significant research cluster working in the NCBES, involving biometrics and cardiovascular electronics. The cluster focuses on engineering research for cancer, rehabilitation, sports and exercise, and neural systems.

Cancer biology, diagnostics & therapeutics

The research within the cancer biology, diagnostics and therapeutics theme is increasing the efficacy of anti-cancer therapies. Our researchers and clinicians in this area are developing a functional understanding of cancer, its cellular and molecular basis, the biology of tumours, and the translation of biological knowledge into new and effective markers and treatments. The main research areas involved in this sub-theme are genome stability, apoptosis and cell signalling, and clinical trials.

The **Centre for Chromosome Biology (CCB)** aims to better understand the fundamentals of chromosome structure and function and how defective chromosomes contribute to human diseases. The **Prostate Cancer Institute (PCI)** focuses on the development of better tests and therapies for patients with prostate cancer. The **National Breast Cancer Research Institute (NBCRI)** is Ireland's leading breast cancer research institute. The **Apoptosis Research Centre (ARC)** conducts interactive and dynamic research, focusing on understanding the complex pathways that regulate cell death, to develop new therapies for the treatment of cancer and neurodegeneration. The **BCNI (Blood Cancer**

Network Ireland) aims to bring together a critical mass of clinical and translational researchers, a sufficient population base and access to samples to increase the potential nationally for clinical and translational research in blood cancers.

Infectious diseases

Infectious diseases remain the major cause of death worldwide. Improved diagnostics, advances in understanding microbial virulence mechanisms and the immunological basis of a range of human diseases underpin efforts to devise new therapeutic approaches. Infection and immunology research at NUI Galway is focused on scientific, clinical and social issues related to infectious diseases and immunology.

Our researchers aim to contribute to the development of new diagnostic and treatment approaches for the diagnosis and management of infectious diseases, immune responses to infection and general immune system dysfunction regeneration of the nervous system. This research informs the development of state-of-the-art clinical care for a large number of infectious diseases.

Immunodiagnostics and therapeutics

This interdisciplinary theme focuses on the translation of basic research within the fields of microbial infection, immunity and inflammation to develop novel diagnostic and therapeutic interventions for infectious and immune-mediated diseases. Researchers work with clinical practitioners based in University Hospital Galway and the Clinical Research Facility.





GlycoDiagnostics and GlycoTherapeutics

Sugars are the most abundant biomolecules on Earth and play major roles in the structure and function of cells and organisms. They are involved in most disease processes and therefore are important in diagnostics and therapeutics. This interdisciplinary theme focuses on the translation of basic research in the fields of microbial infections, immunity and chronic diseases (such as cancer and inflammation) to develop novel diagnostic and therapeutic interventions. Researchers work with clinical practitioners based in University Hospital Galway and the Clinical Research Facility. The **Glycoscience Research Group** is exploring the role of gut glycosylation in host-microbe interactions. This globally unique group explores the roles played by complex sugars in host-bacterial interactions to aid in the discovery of novel diagnostics and therapeutics. The group is also exploring the science behind the biological activities of polysaccharides, from microbes to marine organisms and mammals, with a focus on human health improvement.

Neurosciences

The neurosciences theme incorporates research on behavioural and whole systems neuroscience. It comprises three subgroups: **Applied Clinical Neurosciences** brings together clinical and basic scientists to encourage collaborative interdisciplinary research; the Integrative **Neurosciences subgroup** is a focus for behavioural and whole systems neuroscience; and **Regenerative Neurobiology** focuses on understanding neurodegeneration, neuroprotection and regeneration of the nervous system. This research is relevant to disease states, including spinal cord injury, anxiety and schizophrenia, as well as neurodegenerative disorders such as Parkinson's disease and multiple sclerosis. For instance, the Centre for Pain Research (CPR), a centre of excellence for interdisciplinary research, aims to advance the scientific understanding of pain, from its pre-clinical to its psychological and neuropsychological aspects, to its treatment and management.

Regenerative medicine and developmental biology

Research at the **Regenerative Medicine Institute (REMEDI)** focuses on using stem cell and regenerative medicine technologies to treat human disease. Recognised as Ireland's leading stem cell research centre, REMEDI's mission is to conduct basic research into stem cell biology and to translate and commercialise the results as regenerative therapeutics. REMEDI is a collaboration between scientists, engineers, clinicians and industry. REMEDI currently has focused research programmes in areas such as immunology, gene therapy, induced pluripotent stem cells and cell manufacturing, and the main translational targets at the centre are vascular disease, osteoarthritis and acute lung injury. To fulfil its translational mission, REMEDI manages and operates the **Centre for Cell Manufacturing Ireland (CCMI)**, a facility licensed by the Health Products Regulatory Authority to manufacture stem cells for human applications. It is the only such facility in Ireland.

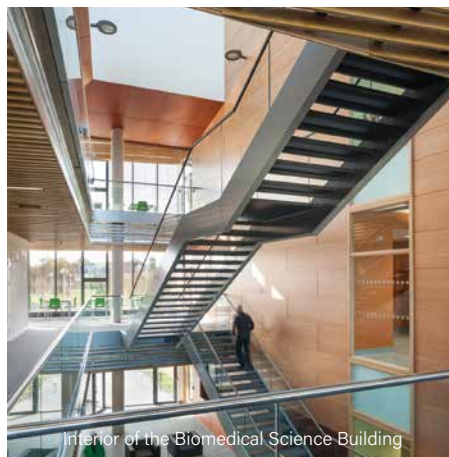
Health and independent living

This theme incorporates practice-based collaborative research with primary care and population health research, and has a strong focus on chronic disease management. This research informs health care and health services. The **Centre for Clinical Health Services Research and Development** is involved in multidisciplinary clinical health services research, with the aim of influencing and informing clinical practice and health care provision. The Galway Diabetes Research Centre brings together clinicians and researchers who are developing new diabetes therapies and management strategies to provide state-of-the-art clinical care.

World-leading facilities

Investment in the very best facilities keeps our research at the cutting edge. Facilities include:

- An 8,000m² Biomedical Science Building that brings researchers from cognate disciplines together in exciting new collaborations, in purpose-built research laboratories.
- A Translational Research Facility on the site of University Hospital Galway, which translates our research into enhanced treatments for patients.
- The Centre for Cell Manufacturing Ireland (CCMI), the only facility in Ireland for the manufacture of human-use stem cells.
- A Clinical Research Facility to translate research from the laboratory bench to the patient's bedside.



Interior of the Biomedical Science Building



Student profile

A little about our students

“My research is primarily focused on improving the accuracy of radiation therapy, using ultrasound imaging systems.

For me, the most engaging and most daunting aspect of a PhD is developing independent, novel ideas for application in your field of research. This, at times, may prove difficult or even frustrating, but it is certainly a fulfilling and rewarding experience when you achieve your goals.

I find the learning environment here to be excellent. NUI Galway has a relaxed atmosphere, and the lecturers, postdoctorate students and postgraduate students are always helpful and approachable.

My experience of the postgraduate intellectual community has been wholly positive. Seminars and poster presentation days are a great opportunity to see the interesting research topics being investigated at NUI Galway, as well as being a great way to meet fellow postgraduate students.”

Michael Martyn

PhD (Medical Physics)



Research Institutes & Centres

Biomedical Science and Engineering

Research Institutes and Centres		
Apoptosis Research Cluster	Professor Afshin Samali	www.apoptosis.ie T: +353 91 492417 E: apoptosis@nuigalway.ie
Blood Cancer Network Ireland	Professor Michael O'Dwyer	www.bloodcancers.ie T: +353 91 495890 E: bcni@nuigalway.ie
Centre for Cell Manufacturing Ireland (CCMI)	Professor Frank Barry Professor Timothy O'Brien	www.remedi.ie/research/national-cell-and-gene-therapy-facility
Centre for Chromosome Biology (CCB)	Professor Noel Lowndes	www.nuigalway.ie/research/chromosome
Centre for Pain Research (CPR)	Co-directors Dr Brian McGuire Professor David Finn	www.nuigalway.ie/centre_pain_research T: +353 91 492 954 E: brian.mcguire@nuigalway.ie T: +353 91 495 280 E: david.finn@nuigalway.ie
CÚRAM—Centre for Research in Medical Devices	Professor Abhay Pandit	http://curamdevices.ie T: +353 91 495833 E: info@curamdevices.ie
Galway Diabetes Research Centre	Professor Fidelma Dunne	www.nuigalway.ie/galway-diabetes-research-centre
Galway Neuroscience Centre	Dr Dara Cannon	http://ncbes.nuigalway.ie/research/galway-neuroscience-centre T: +353 91 495692 E: neuroscience@nuigalway.ie
Glycoscience Research Group	Professor Lokesh Joshi	www.agrc.ie T: +353 91 495 737 E: lokesh.joshi@nuigalway.ie
HRB Clinical Research Facility (CRF), Galway	Professor Martin O'Donnell	www.nuigalway.ie/hrb_crfg T: + 353 91 495 970 E: martin.odonnell@nuigalway.ie
HRB Trials Methodology Research Network	Professor Declan Devane	www.hrb-tmrn.ie T: +353 91 494492 E: hrb-tmrn@nuigalway.ie
National Centre for Biomedical Engineering Science (NCBES)	Professor Rhodri Ceredig	www.ncbes.ie T: +353 91 495 108 E: rhodri.ceredig@nuigalway.ie
Prostate Cancer Institute	Professor Frank Sullivan	http://ncbes.eurhost.net/prostate-cancer.aspx E: frank.sullivan@hse.ie
The Regenerative Medicine Institute (REMEDI)	Professor Timothy O'Brien	www.remedi.ie T: +353 91 495 107 E: timothy.obrien@nuigalway.ie
Regenerative, Modular & Developmental Engineering Laboratory (REMODEL)	Dr Dimitrios Zeugolis	www.remodel.ie E: remodel@nuigalway.ie



Informatics, Physical and Computational Sciences

Developing next generation technologies

NUI Galway's research in this area leads to new technologies and contributes to the knowledge-based economy in Ireland and globally. The major research clusters include Data Analytics and Future Networks, Applied Photonics & Medical Physics, Astronomy & Physical Sciences, Mathematics, and Bioinformatics & Biostatistics. The medical device industry in Ireland is a thriving sector, with Galway at its hub: Galway is one of five global hubs in a medtech market worth €95 billion in the EU.



Data analytics and future networks: big data

Digital connectivity is greatly changing the world as we know it. Data comes from everywhere: sensors used to gather climate information, posts to social media sites, digital pictures and videos, online purchases, and cell phone GPS signals all contribute to the mass of new data created every day. Our vision is to create a healthier, safer, more productive world by empowering a data-driven society to enable better decisions to be made by individuals, communities, businesses and governments.

The **Insight Centre for Data Analytics**, a joint initiative between researchers at NUI Galway, University College Cork, Dublin City University, and University College Dublin, brings together more than 400 researchers and leading Irish academics from these institutions, along with in excess of 40 industry partners, to position Ireland at the heart of global data analytics research.

NUI Galway's **Insight Research Institute (IRI)**, through its involvement in the Insight Centre for Data Analytics, is the driving force in this area. Key research areas are semantic web and linked data, sensor networks, stream reasoning, web science, social network analysis, natural language processing, bioinformatics, sustainable IT and eGovernment.

At NUI Galway, this research theme focuses on the development of tools and smart systems to turn data into information and knowledge that can be used for economic, environmental and social benefits.

www.insight-centre.org/nuig

High performance computing

Technical Computing and Data Analytics cannot function alone. High Performance Computing (HPC) merges computing power and numerical techniques to deliver much higher capacity and performance than a normal desktop computer could in order to solve large problems in science, engineering and business. ICHEC is Ireland's national high performance computing centre and is hosted by NUI Galway. A diverse team highly skilled system administrators and computational scientists engage with researchers, industry and the public sector to provide HPC expertise, resources, support and training. Furthermore ICHEC is active in European and global collaborations, expanding the reach and portfolio of its activities. The demand for and scope for technical and parallel computing specialists have grown dramatically in recent years and they are now a burgeoning part of Ireland's economic story.

www.ichec.ie





Applied Photonics and Medical Physics

National Centre for Laser Applications (NCLA)

The National Centre for Laser Applications (NCLA) was established as a centre of excellence in laser technology. Our researchers work with industry through consultancy, laboratory-based feasibility trials, full research and development (R&D) services, technology transfer, prototyping, laser safety audits and tailored training courses in laser technology, applications and safety. PhD graduate students undertake research in the fundamentals of laser material interactions. The NCLA Laser laboratory leads the implementation of the Structured MSc by Research in Key Enabling Technologies at NUI Galway.

www.nuigalway.ie/ncla

Mathematics

De Brún Centre for Mathematics

The Mathematics cluster supports mathematical research in the areas of Algebra, Discrete Mathematics, Analysis, Numerical Analysis, Geometry, Topology, and Mathematics Education. Research in these areas of pure mathematics and mathematics education underpins the thematic research priorities at NUI Galway of Informatics, Physical and Computational Sciences, and Biomedical Science and Engineering. The main goal of the de Brún Centre for Mathematics is to provide a high quality environment for internationally recognised research excellence in mathematics at NUI Galway.

Stokes Applied Maths Cluster

The ambition of the Stokes Cluster is to foster as much interdisciplinary research as possible across the NUI Galway campus and beyond. Because mathematics underpins so many fields of research in the natural, engineering and social sciences, its applications have a wide-reaching appeal. The Stokes Cluster comprises a broad spectrum of advanced mathematical, theoretical and numerical skills that can be applied to the modeling of computational, physical and biological phenomena, and to the in-depth study of the mathematical equations that underpin the behaviour of physical systems.

Bioinformatics & Biostatistics Research Cluster

Researchers in bioinformatics analyse the genomes of pathogens responsible for infectious diseases and study human genomic data to gain insights into genetic disorders and complex phenotypes. Biostatisticians within the cluster help to discover novel cancer biomarkers and model patient treatment outcomes in clinical trials. Both groups draw on and contribute to the development of powerful new statistical techniques and computational tools to gain fresh biomedical insights of fundamental scientific interest or with the potential for clinical application. Through extensive collaborations, the cluster also supports biomedical research in the HRB Clinical Research Facility, across campus and further afield.

Astronomy

The Centre for Astronomy brings together research and teaching in astronomy, astronomical instrumentation and computational astrophysics. Our research topics include Applied Imaging, Clusters and Exoplanets, Gamma-ray Astronomy, High Speed Stokes Polarimetry, Pulsars, Star Formation and Astrochemistry, Ultra-cool Stars and Virtual Observatories. The centre is also committed to the public understanding of astronomy and science, and regularly holds public lectures.

<http://astro.nuigalway.ie>

Student profile

A little about our students

“I am not your traditional postgraduate student. After spending 11 years working at the White House under the Clinton and Bush administrations, along with starting a successful fitness management consulting business in the United States, I wanted a change in my life. I engage with others who are successful, innovative and share in my desire for ‘presidential quality’. I found those same traits at NUI Galway. I am proud to be the second member of The West Wing to call NUI Galway home (actor Martin Sheen studied at NUI Galway for a semester recently).

I had my choice of high quality research environments from around the world. I picked NUI Galway because of the people, the learning environment and the world-class expertise found on the campus.

My research looks at how people can be healthier by using mobile fitness apps on their iPhones and the sharing of their health with their social networks through Twitter.

My supervisor is Dr John Breslin, or as I like to call him, ‘the Mark Zuckerberg of Ireland’. John is one of the most intelligent, forward-thinking, tech entrepreneurs I have ever met. During my career, I’ve associated myself with high level, high quality and highly successful organizations. My choice in researching at NUI Galway continues that association. If you want a university that can jump-start you down a very rewarding and successful career path, then NUI Galway is the place to be.”

Ted Vickey

Joint PhD (Digital Enterprise and Engineering/Informatics)
Digital Enterprise Research Institute (DERI) and
College of Engineering and Informatics



Research Institutes & Centres

Informatics, Physical and Computational Sciences

Research Institutes and Centres		
Centre for Astronomy	Dr Andrew Shearer	astro.nuigalway.ie T: +353 91 493 114 F: +353 91 750 501 E: andrew.shearer@nuigalway.ie
Crystallography Centre	Dr Andrea Erxleben	www.nuigalway.ie/cryst T: +353 91 492 487 F: +353 91 525 700 E: andrea.erxleben@nuigalway.ie
De Brún Centre for Computational Algebra Development	Dr Graham Ellis	hamilton.nuigalway.ie/DeBrunCentre E: graham.ellis@nuigalway.ie
Insight Centre for Data Analytics	Mr Oliver Daniels Dietrich Rebholz-Schumann	www.insight-centre.org E: rebholz@insight-centre.org
Irish Centre for High-End Computing (ICHEC)	Professor JC Desplat	www.ichec.ie T: +353 15 241 608 F: +353 17 645 845 E: j-c.desplat@ichec.ie
Lighthouse–Centre for Applied Photonics	Dr Gerard M. O'Connor	www.nuigalway.ie/lighthouse T: +353 91 492513 E: gerard.oconnor@nuigalway.ie
Nanoscale Biophotonics	Dr Alan Ryder	www.nuigalway.ie/nanoscale T: +353 91 492 943 F: +353 91 494 596 E: alan.ryder@nuigalway.ie
National Centre for Laser Applications	Dr Gerard O'Connor	www.nuigalway.ie/ncla T: +353 91 493595 E: ncla@nuigalway.ie





Environment, Marine and Energy

**Understanding impacts on
the natural world; developing
for a sustainable future**

Climate change, over dependence on imported energy and access to natural resources, such as clean water and food, all require imaginative solutions from scientists, engineers and socioeconomic researchers. If you are interested in and recognise the environmental and energy challenges that we face in the next few decades, then the Ryan Institute at NUI Galway is the right place to study and make your contribution.



The Ryan Institute

The Ryan Institute is NUI Galway's hub for Environmental, Marine and Energy research and contributes to some of the most important national and international, long-term, environmental, marine and energy research issues. The Ryan Institute's affiliated researchers are committed to knowledge sharing and collaboration across the sciences, engineering, social sciences and medicine.

Research at the Ryan Institute addresses some of the most pressing issues of the 21st century, including observation and modelling of changes in the atmosphere and oceans, biodiversity, marine economics and law, aquaculture and agriculture, water resources, sustainable energy and the built environment. Our researchers work with other academic institutions, industry and government to provide the evidence base for informing policy and business decisions associated with climate and environmental change, and natural resources. The Ryan Institute contributes to research-led postgraduate teaching and has an outstanding record of public outreach.

The Ryan Institute is home to 90 academic staff, 50 post-doctoral researchers, 172 postgraduate students and 11 core staff. It is involved in a wide variety of interdisciplinary research projects and collaborates extensively with national and international partners.

Its location next to the Atlantic Ocean, is a strong driver of the Institute's research priorities, which include:

- Understanding and predicting changes in climate, ecological and marine systems,
- Innovation in energy-efficient technologies and bioenergy,
- Research and development in aquaculture and fisheries,
- Observation and forecasting of marine energy resources,
- Water resources and agriculture,
- Health and well-being via environmental stewardship,
- Provision of information to guide socioeconomic and policy decisions.

90 Academic staff

50 Post-doctoral researchers

172 Postgraduate students

11 Core staff

As a postgraduate research student, you can help our researchers to shape the future and make an impact in the following research areas of Environment, Marine and Energy:

Environment

The EU articulates an engaging vision of the future to 2050 in the 7th Environment Action Programme 'Living Well, within the Limits of our Planet'. Physical and life scientists, engineers, educators and social scientists must work collaboratively to understand environmental systems that, partly owing to human activity, may be approaching thresholds for irreversible change. This ethos forms the foundation for the Ryan Institute's mission in the area of Environmental Research.

There are three main thrusts to our environmental research: Environmental Technologies, Climate Change, and Environment and Health.

Environmental Technologies

Environmental Technologies are about directly or indirectly improving our marine and terrestrial environments, our health and quality of life, and the sustainability of our urban spaces and lifestyles. Researchers in this field are working on areas such as sensor development, waste treatment, and energy efficient technologies—areas that can be applied to almost all aspects of Environmental, Marine and Energy research.

Climate Change

Climate Change research is organized into four main sub-themes—Atmospheric Composition and Emissions, Air Quality and Pollution, Ocean-Atmosphere Exchange, and Climate-Ecosystem Interactions—and has been consolidated into an integrated **Centre for Climate and Air Pollution Studies (C-CAPS)**. C-CAPS aims to quantify key atmospheric processes and transport emission inventories. These data are fed into predictive systems such as a coupled ocean-atmosphere model and marine ecosystem models that are crucial to accurate climate change scenarios.

Environment and Health

We talk much more about disease than we talk about health. What passes for discussion on health is mostly about the prevention of disease, the detection of disease and the treatment of disease. An overwhelming preoccupation with disease is an expensive and inefficient way to pursue health. Health is achieved and sustained through our interaction with the world around us – air, water and food, the people, the footpaths, the hurling pitches, night clubs and countryside. The Centre for Health from Environment (CHE) recognises the dependence of human health on our environment, and it promotes the concept that health and well-being are the most important resource that we derive from our environment.



Marine

Oceans offer opportunities for sustainable economic development but human activities are threatening marine ecosystems and sustainable maritime activities. The EU has taken up this challenge by establishing an integrated maritime policy which emphasises a “European Strategy for Marine and Maritime Research”. The research aims are to improve the understanding and the predictive capacity of marine ecosystems’ response to a combination of natural and anthropogenic factors, while fostering innovations to make the most of sea resources. The Ryan Institute’s mission for Marine research is aligned with these broad aims.

Research into the marine environment of Irish coastal waters has a long history at NUI Galway, with strong early inputs from the old Departments of Zoology, Botany, Oceanography, Microbiology and the Applied Geophysics Unit. The Marine and Coastal Processes thematic research area encompasses research on Coastal Biogeochemical Processes, Ecosystems and Human Health, Marine Pathways, and the Changing Coast, and contributes to our vision for clean, healthy, safe and biologically diverse seas.

Energy

The EU is committed to transforming its economy from one heavily reliant on imported fossil fuels to a more indigenous low carbon economy centred on energy efficiency, renewable energy and smart networks. The Ryan Institute has a very strong and active team of over 100 researchers working in the area of Energy, with ongoing and planned research organized into the following sub-themes: Bioenergy, Renewable Resources, Energy Efficient Technologies, Energy and Society, and Built Environment and Smart Cities. In 2007, the **Energy Research Centre (ERC)** was formed to reflect the societal and strategic importance of this research area, and to provide researchers with the strongest possible platform for sharing ideas and sparking innovation. The ERC now boasts 100+ members, and is actively engaging with the national and international energy research community, industry partners, government agencies and NGOs, and the local community.

An exciting development at the Ryan Institute is the establishment of a national Technology Centre for Bio-refining and Bio-energy. The Centre was established in 2010 to bring together industry stakeholders, academic experts and government agencies working in this area to support a sustainable and competitive Irish biomass industry.



Committed to transforming the economy from one heavily reliant on imported fossil fuels to a more indigenous low carbon economy

Top-class facilities and teaching supports

Our facilities provide an essential platform for effective terrestrial, marine, and atmospheric studies. Researchers are located across the campus in many disciplines, but the Institute has several dedicated buildings both on and off campus.

- The **Martin Ryan Building** and the Annexe (3255m²) house 16 laboratories, a 16-seater boardroom, 22 offices, a 168-seater lecture theatre, and a Zoology and Marine Biology Museum.
- The **Orbsen Building** (1000m²) houses five laboratories, a centralised GIS facility, study space for 48 postgraduate and postdoctoral researchers, and six offices.
- The **Atmospheric Research Station** at Mace Head, Carna, is comprised of three laboratory buildings, one at 300m and two at 90m from the shore.
- The **Carna Aquaculture Research Facility** is located on ~7 hectares of land with ~600m³ of office and service area space, and 1200m³ of laboratory space.
- The **Máirín de Valéra Carron Research Facility** (340m²) in the Burren has dormitory accommodation for 30 people, cooking and dining areas, and a teaching laboratory.

Student profile

A little about our students

“My research investigates the propagation of sound waves, used to search for potential oil and gas reservoirs in the seabed offshore Ireland.

This project presents a real-world problem and is a unique opportunity to combine oceanography with geophysics in a very practical and important way.

I was teaching secondary school science prior to this, but decided to take on the challenge of research and to further my own scientific skills in the process. Ideally my new career will involve a combination of teaching and research.

I would recommend NUI Galway for its incredibly supportive learning environment, resources and the opportunities that supervisors here help to make a reality. I have received constant encouragement and friendly guidance since returning to NUI Galway as a research student. It really feels like everyone in the university wants to see you succeed.”

Sinéad Crawford

PhD (Earth & Ocean Sciences)



Research Institutes & Centres

Environment, Marine and Energy

Research Institutes and Centres		
The Ryan Institute	Professor Colin Brown	www.ryaninstitute.ie T: +353 91 492 691 F: +353 91 495 515 E: colin.brown@nuigalway.ie
Centre for Climate & Air Pollution Studies (C-Caps)	Professor Colin O'Dowd	www.macehead.org www.nuigalway.ie/c-caps T: +353 91 493 306 F: +353 91 494 584 E: colin.odowd@nuigalway.ie
Combustion Chemistry Centre (C3)	Dr Henry Curran	c3.nuigalway.ie T: +353 91 493 856 E: henry.curran@nuigalway.ie
Energy Research Centre (ERC)	Professor Vincent O'Flaherty	www.nuigalway.ie/energy T: +353 91 493 734 F: +353 91 494 598 E: vincent.oflaherty@nuigalway.ie
Irish Centre for Research in Applied Geosciences	Professor Peter Croot	http://icrag-centre.org/about T: +353 1 716 2939 E: info@icrag-centre.org
MaREI Marine Renewable Energy Centre	Professor Michael Hartnett (Co-Director)	http://marei.ie T: +353 91 492 502 E: michael.hartnett@nuigalway.ie
Paleoenvironmental Research Unit	Dr Karen Molloy	www.nuigalway.ie/pru T: +353 91 493 255 F: +353 91 494 535 E: karen.molloy@nuigalway.ie
Plant and Agricultural Biosciences Centre	Professor Charles Spillane	http://www.plantagbiosciences.org T: +353 91 494148 E: charles.spillane@nuigalway.ie
Power Electronics Research Centre (PERC)	Professor Ger Hurley	Perc.nuigalway.ie T: +353 493 136 E: gerard.hurley@nuigalway.ie
Socio-Economic Marine Research Unit (SEMRU)	Dr Stephen Hynes	www.nuigalway.ie/semru T: +353 91 493 105 E: stephen.hynes@nuigalway.ie

Applied Social Sciences



Touching lives, changing futures

NUI Galway has an international research reputation in Applied Social Sciences and Public Policy. The Whitaker Institute for Innovation and Societal Change and the Institute for Lifecourse and Society (ILAS) (pictured here), home to the applied social sciences and public policy research theme, are committed to building a foundation of knowledge to drive innovation and the understanding of social entrepreneurial strategies through their research areas and programmes: economic innovation, social change, social inclusion and balanced development and health.



Dr. T.K. Whitaker, after
whom the Whitaker
Institute is named, during
a visit to NUI Galway



The Whitaker Institute

The Whitaker Institute for Innovation and Societal Change is the major structure for supporting research in business and the social sciences at NUI Galway. Inspired by the themes that motivated Dr T.K. Whitaker's life's work, the Institute has identified three major themes, in the development of which it plans to be a national and international leader:

- Business, Innovation & Economic Development
- Public-Sector Innovation and Reform
- Sustainable and Inclusive Societies

Supporting these themes, the Institute has a range of well-established and emerging multi-disciplinary research clusters focused on evidence-based policy and practice.

The scale and scope of the Whitaker Institute's activities creates a vibrant research environment that provides staff and students with the opportunity to engage with leading international scholars and a wide range of regional, national and international stakeholders.

www.nuigalway.ie/whitakerinstitute

Social sciences in Ireland

The **Institute for Lifecourse and Society (ILAS)**, under the directorship of Professor Pat Dolan, is a newly designated research institute for the applied social sciences at NUI Galway. The Institute supports applied research that informs policy development and practice to make a positive difference to people's lives. ILAS brings together existing work in relation to targeted populations, such as older persons, children and families, and persons with disabilities into one domain of research, teaching and policy. The core function of the Institute is the pursuit of interdisciplinary research in the social sciences by creatively integrating the rich and diverse intellectual resources from within the University and beyond.

The Institute was established in part on the commitment, expertise and track record of its three constituent research Centres in NUI Galway — **UNESCO Child and Family Research Centre**, **Irish Centre for Social Gerontology** and **Centre for Disability Law and Policy**. Additional research communities that have joined

the Institute include the **Irish Centre for Autism and Neurodevelopmental Research (ICAN)**, **Health Economics and Policy Analysis (HEPA)**, and **Community Knowledge Initiative (CKI)**. Additionally, a range of stakeholders, including research centres, research clusters, community demonstration projects and individual academics drawn from an impressive range of Colleges, Schools, and Disciplines (including health, law, economics and sociology) within NUI Galway have formally expressed an interest in joining the Institute.

www.nuigalway.ie/lifecourseinstitute

UNESCO Child and Family Research Centre

NUI Galway is home to the Republic of Ireland's first UNESCO Chair in Children, Youth and Civic Engagement. As part of NUI Galway's Institute for Lifecourse and Society, the UCFRC undertakes research, education and training in the areas of family support and youth development. The centre's unique expertise in children and family policy, evaluation and programme planning is internationally recognised, and with the support of UNESCO, the UCFRC engages in a range of collaborations, supporting research that informs policy development and applied practice in Europe, the United States and Africa.

www.childandfamilyresearch.ie

Irish Centre for Social Gerontology

This multidisciplinary centre, which has excellent international links, focuses on research, education and training in the fields of ageing and social gerontology. Underpinning this research is recognition of the diversity of ageing populations and the increasing need to adopt interdisciplinary perspectives and novel approaches to addressing the questions raised by population ageing.

Researchers at the ICSG focus on such areas as the economics of ageing, social policies for ageing societies, ageing and place, and health and well-being in later life. The ICSG plays a leading role in the Institute for Lifecourse and Society, engaging in joint research with the Centre for Disability Law and Policy, the UNESCO Child and Family Research Centre and other groups. www.icsg.ie



Centre for Disability Law and Policy

The **Centre for Disability Law and Policy** is an internationally recognised centre of research excellence at NUI Galway's School of Law. It was founded in 2008 and was the first of its kind in Europe. The centre focuses on advancing social justice and human rights for people with disabilities through legislative and policy reform.

www.nuigalway.ie/cdlp

World-renowned Centre for Human Rights Law

The **Irish Centre for Human Rights** is one of the world's premier university-based institutions for the study and promotion of human rights and humanitarian law. It has developed a global reputation for excellence in the field of human rights teaching, research and advocacy. This thriving research community allows students to engage in research on a broad spectrum of topics, including international human rights law, international criminal law, international humanitarian law and international relations. The centre's international reputation attracts high quality students to what is a thriving community of doctoral researchers. Researchers come from diverse cultural, educational, experiential backgrounds and from every corner of the globe. The excellence of the teaching faculty of the centre and its general collegial atmosphere of shared pursuit encourage a high level of achievement.

www.nuigalway.ie/human_rights

Health Services Research

The **Centre for Clinical Health Services Research and Development (CCHSRD)**

investigates and reports on the needs of a transforming Irish health service. Recent national reforms to health care provision emphasise an integrated, interdisciplinary approach, and the centre is well placed to support and reflect this new and collaborative way of working.

The Centre for Clinical Health Services Research and Development (CCHSRD) aims to:

- Perform high quality clinical health services research of regional, national and international significance
- Harness a rich diversity of perspectives and expertise for collaborative research, appropriate to an increasingly interdisciplinary health service
- Generate research that is relevant to service providers and service users and to maximise opportunities for a participatory approach to clinical health services research
- Influence and inform clinical practice and service reform by disseminating information among practitioners, policymakers, researchers and the general public

A smiling man and woman are standing in front of a stone building with ivy. The man is on the left, wearing a dark jacket over a plaid shirt, and the woman is on the right, wearing a black jacket and a black scarf. They are both holding books. The background is a stone building with ivy and a red door.

Health Promotion Research

Our **Health Promotion Research Centre (HPRC)**, the only one of its kind in Ireland, has been designated as a World Health Organization Collaborating Centre for Health Promotion Research since 2009. The centre produces high quality research that supports the development of best practice and policy in Health Promotion. The objectives of the HPRC include:

- The generation and dissemination of Health Promotion research that is of national and international relevance
- The translation of research that will lead to the development of healthy public policy and evidence-informed practice

The HPRC collaborates with national, European and international agencies, including the EU and WHO, on the development and evaluation of Health Promotion initiatives. The centre has an active multidisciplinary research programme in place, with over 30 staff undertaking independent and commissioned research work. Staff of the centre contribute to educational programmes in health promotion and the supervision of doctoral and master's research dissertations.

www.nuigalway.ie/hprc

Student profile

A little about our students

“I decided that mixing my practical work experience with an appropriate research topic in a well structured environment would be a rewarding and fruitful experience.

I find the environment in NUI Galway very amenable to my research work. I always get a sense of well-being from the physical surroundings.

The new Arts Humanities and Social Science Research Building provides a super space and environment in which to study.

I would like to extend my research to examine the experiences of SMEs in their search for financial support from various sources, ultimately with a view to distilling the best practices for improving this process.”

Jack Harty

MComm Research



Research Institutes & Centres

Applied Social Sciences

Research Institutes and Centres		
Centre for Bioethical Research and Analysis (COBRA)	Dr Richard Hull	www.nuigalway.ie/cobra T: +353 91 492 415 E: noel.lowndes@nuigalway.ie
Centre for Clinical Health Services Research and Development (CCHSRD)	Professor Andrew Murphy	www.nuigalway.ie/cchsrd T: +353 91 493 525 F: +353 91 494 559 E: andrew.murphy@nuigalway.ie
Environmental & Natural Resource Economics Research Unit	Dr Tom Van Rensburg	www.ryaninstitute.ie T: +353 91 493 858 E: thomas.vanrensburg@nuigalway.ie
Health Promotion Research Centre	Professor Margaret Barry	www.nuigalway.ie/hprc T: +353 91 493 348 F: +353 91 494 547 E: margaret.barry@nuigalway.ie
HRB Irish Primary Care Clinical Trials Network	Professor Andrew Murphy	www.hrbcentreprimarycare.ie
Institute for Lifecourse and Society		
<ul style="list-style-type: none"> Irish Centre for Social Gerontology (ICSG) 	Professor Tom Scharf	www.nuigalway.ie/icsg T: +353 91 495 459 E: thomas.scharf@nuigalway.ie
<ul style="list-style-type: none"> UNESCO Child and Family Research Centre (CFRC) 	Professor Pat Dolan	www.childandfamilyresearch.ie T: +353 91 492 930 E: pat.dolan@nuigalway.ie
<ul style="list-style-type: none"> Centre for Disability Law and Policy (CDLP) 	Professor Gerard Quinn	www.nuigalway.ie/cdlp T: +353 91 523 014 E: gerard.quinn@nuigalway.ie
<ul style="list-style-type: none"> Irish Centre for Autism & Neurodevelopmental Research 	Dr Geraldine Leader	www.nuigalway.ie/ican T: +353 91 493 101 F: +353 91 521 355 E: geraldine.leader@nuigalway.ie
Irish Centre for Human Rights	Professor Michael O'Flaherty	www.nuigalway.ie/human_rights T: + 353 91 493 081 E: michael.oflaherty@nuigalway.ie
National Centre for Security Research	Dr Kiran Sarma	www.nuigalway.ie/securesocieties E: kiran.sarma@nuigalway.ie
Social Sciences Research Centre (SSRC)	Dr Ricca Edmondson	www.nuigalway.ie/ssrc T: +353 91 524 411 E: ricca.edmondson@nuigalway.ie
Whitaker Institute for Innovation and Societal Change	Professor John McHale	www.cisc.ie T: +353 91 493 472 E: john.mchale@nuigalway.ie
Women's Studies Centre	Dr Niamh Reilly	www.nuigalway.ie/wsc T: +353 91 495 403 E: niamh.reilly@nuigalway.ie



Humanities in Context

Understanding our past for a better future

The humanities can be described as the study of how people process and document the human experience. Knowledge of these records gives us the opportunity to feel a sense of connection to those who have come before us, as well as to our contemporaries. NUI Galway is home to the world-recognised Moore Institute, a thriving community of academics, researchers and creative thinkers. It is also home to the world's largest theatre digitisation project, a rich archive collection, and the Centre for Irish Studies. As a postgraduate student, you will benefit from the University's unique combination of ground-breaking academic expertise, professional practice and collaboration with some of Ireland's leading experts in humanities.

Tony-Award winning actress
Marie Mullen of Druid Theatre
with NUI Galway Drama
students, Gaiety Theatre 2014.





Moore Institute: exploring the interconnection between creativity and innovation

The **Moore Institute** brings together a dynamic group of researchers working on projects in the humanities and social studies, including interdisciplinary investigation of literature, history, politics, language, digital humanities, theatre, performance, Irish studies, gender, social issues, landscape, archaeology, and geography. We support postgraduates, postdoctoral fellows and academic staff throughout the College of Arts, Social Sciences and Celtic Studies by hosting seminars, conferences, exhibitions, discussion groups and other events. We also host visiting scholars from around the world, integrating NUI Galway with leading research at a global level. We work closely with the James Hardiman Library to maximize our exceptional archival collections in theatre, Irish, politics and landscape, and other areas.

www.nuigalway.ie/mooreinstitute

Leading the way in digital humanities

NUI Galway is home to several important projects in the field of digital humanities, including the Thomas Moore Hypermedia Archive, a multimedia electronic edition of the collected literary and musical works of the nineteenth-century Irish poet, and the TEXTE project, a digital humanities research and training programme. TEXTE (Transfer of Expertise in the Technologies of Editing) is the largest digitisation project in humanities in the EU, creating electronic editions and web-based archives of important historical and literary works. TEXTE makes cultural heritage globally accessible and benefits readers who may not have easy access to large scholarly libraries. It helps to preserve old and rare manuscripts or printed works by creating digital versions that can be used without the risk of damage to the fragile originals, and the electronic data is instantly searchable and comprehensively indexed in ways that printed editions can never be. By bringing traditional humanities disciplines such as literature and history together with advanced computer technology and software design, NUI Galway is well positioned to becoming a major international centre for this growing area of research.



World's largest theatre digitisation project

In 2012 NUI Galway entered into a strategic partnership with the Abbey Theatre, Ireland's National Theatre, to digitise the complete Abbey Archive. In what is the world's largest theatre digitisation project, NUI Galway researchers are making available for the first time one of Ireland's most significant literary, historical, social and cultural archives. In 2016, NUI Galway announced that it was also producing a digital archive of the Gate Theatre and an Oral History project involving Druid Theatre. These exciting Digital Humanities projects place NUI Galway at the forefront of international theatre research.

www.library.nuigalway.ie/collections/archives

Drama and Theatre Studies at NUI Galway

NUI Galway is a leading international centre for the study of Irish theatre. Its Centre for Drama, Theatre and Performance focuses on research and practice in drama and the performing arts, and our staff have special strengths in practice-based research, Irish theatre, applied theatre, and writing for theatre (including playwriting), among other areas.

Central to our activities are links with the Irish theatre sector. The University has forged dynamic partnerships with key cultural arts organisations in Ireland, including the Abbey Theatre, Druid Theatre Company, and the Galway International Arts Festival. The Centre hosts regular visits from leading writers, practitioners and scholars, and holds major international conferences annually. Student productions take place throughout the year, staged both on campus and in city theatres.

In 2014 Druid Theatre Company and NUI Galway launched the Druid Academy. Its aim is to foster new generations of theatre makers, researchers and playwrights, who will change the way we produce and think about drama in Galway, Ireland and the world. Tony Award-winning director Dr Garry Hynes has taken up the role of Adjunct Professor of Drama at NUI Galway. As a result, our students benefit from regular workshops and master classes with the renowned director, as well as with many other members of the Druid ensemble and company.

The Centre for Drama, Theatre and Performance is a thriving research community. Most of our PhD students have won competitive scholarships in support of their research, and we also welcome funded post-doctoral fellows and visiting researchers every year. Current projects include practice-based PhDs on dance and disability, verbatim theatre and oral history, Shaw's Irish plays and Yeats's dance plays. We also host PhD research on Shakespeare and Ireland, intercultural theatre, site specific performance, Irish scenography, amateur theatre, and more.

Our research students are given extensive use of first-rate archival and research facilities, and have access to rehearsal spaces, a 120-seat theatre and a writers' studio space, and much more. NUI Galway research students present their work at major international conferences, have published with leading journals, and are given dedicated professional mentoring throughout their time at the University.

Fostering new generations of theatre makers, researchers and playwrights, who will change how we produce and think about drama

A rich archive collection

Archives comprise a major research resource for researchers working on aspects of the literary, social, economic, political and cultural life of Ireland. The archive collections of the James Hardiman Library include over 350 unique archival and special collections, ranging in size from one postcard to 300 boxes of material, and dating from 1485 to the present. These make up one of the most important collections of Irish theatre archives in the world, featuring material from the Thomas Kilroy Collection, the Druid Theatre Company, Galway Arts Festival, Taibhdhearc na Gaillimhe, Lyric Players' Theatre/ O'Malley Collection and the Abbey Theatre and the Gate Theatre collections. The Library's world-class facilities, including a newly built 36-seat reading room and dedicated exhibition space, make it a dynamic hub for learning and showcasing innovation.

NUI Galway is also home to the papers and recordings of director, writer and actor John Huston, and also houses the archives of the renowned film-maker and environmentalist Éamonn de Buitléar. The Huston Archive offers a unique insight into the prolific intersection of Irish literature and American cinema.

The Éamonn de Buitléar multimedia archive collection, which spans over 60 years, includes his wildlife materials, as well as original recordings and unique insights into the revival of the Irish traditional music in the 20th century.

These archives are held in the James Hardiman Library at NUI Galway, which is also home to a range of other literary, historical and political archives, including the Brendan Duddy Archive, which has the full text of the 'red book' (a handwritten account of the 1981 hunger strike negotiations). This provides a unique insight into the resolution of the 'Troubles', during which Duddy secretly acted as an intermediary between the British Government and the IRA. Other major electronic historical databases include that of the Landed Estates of Munster, c.1700–1900, and the Irish Language and Literature Collections, which feature material from Conradh na Gaeilge, the Tadhg Seoige papers and Lámhscríbhinní Dubhghlas de hÍde.



Centre for Irish Studies

Since its inception in 2000, the Centre for Irish Studies has established itself as one of the pre-eminent centres worldwide for advanced teaching and interdisciplinary research on modern and contemporary Irish literature, language, music, history and culture. The centre is particularly open to innovative research on Irish writing, in both Irish and English, translation studies, space and place studies, and Irish music and dance studies.

The centre has developed a number of partnerships between the creative and performing arts and the academic community at NUI Galway, including the appointments of Irish language poet, Máire Mhac an tSaoi, and the late John McGahern as honorary professors of Irish Studies. The centre has also developed a number of archival projects, including a valuable collection of songs from the repertoires of the sean-nós singers-in-residence, audio recordings of contemporary Irish writers, and the Joe Burke Archive, which provides extraordinary insights into the music tradition of East Galway and the Irish diaspora.

www.nuigalway.ie/centre_irish_studies

Student profile

A little about our students

“My research focuses on the European Union’s role in the Northern Ireland Peace Process. The most engaging element is certainly interviewing the people who actually had a role in the Peace Process—that is a great privilege. I also really enjoy the archival research. The learning environment at NUI Galway is challenging, friendly and very well organised. My desk is in the new Hardiman Research Building, which offers every facility.

A very positive element of the University’s postgraduate community is the presence of students from all around the world, who perfectly integrate with the Irish students.

I would recommend NUI Galway to prospective research students: it will ensure a challenging and complete framework, where you will develop research skills and cultivate personal passions in a positive exchange of different cultures and experiences.”

Giada Laganà

PhD (Sociology & Politics)



Research Institutes & Centres

Humanities in Context

Research Institutes and Centres		
Centre for Drama, Theatre and Performance	Dr Patrick Lonergan	www.nuigalway.ie/drama T: +353 91 49 4426 E: patrick.lonergan@nuigalway.ie
Centre for Irish Studies	Dr Louis de Paor	www.nuigalway.ie/centre_irish_studies T: +353 91 493 660 F: +353 91 495 513 E: louis.depaor@nuigalway.ie
Huston School of Film and Digital Media	Mr Rod Stoneman	www.filmschool.ie T: +353 91 492 999 E: rod.stoneman@nuigalway.ie
Moore Institute for Research in the Humanities and Social Studies	Professor Daniel Carey	www.nuigalway.ie/mooreinstitute T: +353 91 493 907 E: mooreinstitute@nuigalway.ie



Research Programmes

Structured PhD programmes

Structured PhD programmes provide you with focused support during your research, helping you to develop a range of discipline-specific and transferable skills and giving you a more rounded PhD experience, which will assist you greatly in your career after you graduate. Some of the structured PhD programmes involve inter-institutional collaboration.

The key characteristics are as follows:

- a. The core component of a structured PhD programme is the advancement of knowledge through original research. At the same time, the structured PhD is designed to meet the needs of an employment market that is wider than academia.
- b. It provides high quality research experience, training and output, consistent with international norms and best practice.
- c. To support the original research activity, the following elements are included:
 - a formalised integrated programme of education, training and personal and professional development activities
 - the development of discipline-specific knowledge, research skills and generic/transferable skills
 - declared outcomes and graduate attributes in line with national and international best practice
- d. Supervision by a primary supervisor, with a supporting panel approved by the institution. At NUI Galway, every research student and supervisor has a 'Graduate Research Committee.'
- e. Progress to completion is formally monitored against published criteria and supported by formal institutional arrangements in line with national and international best practice.
- f. Successful completion and examination of the research thesis is the basis for the award of the PhD degree.
- g. Registration is normally for four years for a full-time student.
- h. Flexible delivery and assessment are key features of Structured PhD modules.

At NUI Galway, every research student and supervisor has the support of a 'Graduate Research Committee.'

Structured PhDs are now offered in each College. For further information, follow the links below:

College of Arts, Social Sciences and Celtic Studies

www.nuigalway.ie/colleges-and-schools/arts-social-sciences-and-celtic-studies/phd-research-degrees/index.html

College of Business, Public Policy & Law

www.nuigalway.ie/business-public-policy-law/cairnes/courses/research/business-public-policy-law.html

College of Engineering and Informatics

www.nuigalway.ie/engineering-informatics/research/postgraduateresearchinduction

College of Medicine, Nursing and Health Sciences

www.nuigalway.ie/colleges/mnhs/research.html

College of Science

www.nuigalway.ie/science/postgraduatestructuredprogrammes

Each of the structured PhD programmes offers discipline-specific modules which are listed under each of the Colleges. Further information on modules is available at the following link:

<http://www.nuigalway.ie/graduate-studies/prospectivestudents/structuredphds>



Research skills training resources

Research Skills Training Resources are available for Research Students on the Graduate Studies Blackboard 1GST1 site. Each incoming student is automatically registered on this Blackboard site.

- An Introduction to Research Skills
- Getting Published in the Arts
- Getting Published in the Sciences
- Ethics 1: Good Research Practice
- Ethics 2: Working with Human Subjects
- Research Methods in the Arts and Humanities
- Research Methods in the Social Sciences
- Research Methods in the Sciences
- Research Methods in Literature Review
- Managing Your Research Project
- Career Planning in the Sciences
- Career Planning in the Arts, Humanities and Social Sciences
- Intellectual Property in the Research Context
- Working with your Supervisor
- Conference, Presenting & Networking
- Research Integrity
- Natural and Physical Sciences
- Engineering and Technology
- Social and Behavioural Sciences
- Arts & Humanities
- Academic Entrepreneurship: An Introduction:
- Entrepreneurial Opportunities: Recognition and Evaluation
- Entrepreneurial Resources: People, Teams and Finance
- Other Video Materials
- Information Literacy
- Poster Design
- Research Supervision
- Thesis Writing
- Writing for Publication
- The Viva



Other supports

Vice Deans of Graduate Studies

In each College, there is a Vice Dean, who is responsible for working with the Dean of Graduate Studies, ensuring that feedback from postgraduate students, supervisors, Graduate Research Committees and examiners is considered and that any necessary changes in guidelines or regulations are drafted and formally approved.

College of Arts, Social Sciences & Celtic Studies: **Joe Mac Donnacha**

College of Business, Public Policy & Law: **Dr Rachel Hilliard & Dr Ciara Smyth**

College of Engineering & Informatics: **Dr Jim Duggan**

College of Medicine, Nursing & Midwifery: **Dr Dara Cannon**

College of Science: **Dr Mike Carty**

Academic research postgraduate coordinators

These staff members will be able to assist you with general research postgraduate queries within your discipline and can advise about student representation on various School/ College committees.

University Guidelines for Research Degree Programmes Available at:

www.nuigalway.ie/media/graduatestudies/files/university_guidelines_for_research_degree_programmes.pdf

National Guidelines of Good Practice in the Organisation of PhD Programmes in Irish Universities is available at:

[www.qqi.ie/Pages/Good-Practice-Guide---In-the-Organisation-of-Phd-Programmes-in-Irish-Higher-Education-\(2005\).aspx](http://www.qqi.ie/Pages/Good-Practice-Guide---In-the-Organisation-of-Phd-Programmes-in-Irish-Higher-Education-(2005).aspx)

European University Association (EUA)

www.eua.be

ALIVE: NUI Galway's Student Volunteering Programme

Volunteering is a great way to meet new and interesting people. It also is a unique opportunity for students to increase their knowledge, skills and abilities so that they understand and appreciate the diversity of our society by working in partnership with communities for mutual benefit. ALIVE (A Learning Initiative and the Volunteering Experience) was established by the University to enable, harness, acknowledge and support the contribution that NUI Galway students make by volunteering either at home, in Galway or within the University community itself. When you volunteer, you receive your ALIVE certificate, which is a great addition to your CV. <http://cki.nuigalway.ie/alive>



Our Research Programmes

Research programme listings

(Sorted by subject area)

Subject area	Degree(s) available (ft = full-time; pt = part-time)	Website/s (for detailed information, including potential supervisor[s] and their research interests)
Agribiosciences	Structured Masters (ft & pt)	www.nuigalway.ie/courses/research-postgraduate-programmes/structured-phd/agribiosciences.html
Anaesthesia	Structured PhD (ft), PhD (ft & pt), MD (ft & pt), MSc (ft & pt)	www.nuigalway.ie/courses/research-postgraduate-programmes/structured-phd/anaesthesia.html www.nuigalway.ie/courses/research-postgraduate-programmes/anaesthesia.html
Anatomy	Structured PhD (ft), PhD (pt), MSc (ft & pt)	www.nuigalway.ie/courses/research-postgraduate-programmes/structured-phd/anatomy.html www.nuigalway.ie/courses/research-postgraduate-programmes/anatomy.html
Applied Behaviour Analysis	Structured PhD (ft)	www.nuigalway.ie/courses/research-postgraduate-programmes/structured-phd/applied-behaviour-analysis.html
Applied Mathematics	Structured PhD (ft), MSc (ft & pt)	www.nuigalway.ie/courses/research-postgraduate-programmes/structured-phd/applied-mathematics.html www.nuigalway.ie/courses/research-postgraduate-programmes/applied-maths.html
Archaeology	Structured PhD (ft), MLitt (ft & pt)	www.nuigalway.ie/courses/research-postgraduate-programmes/structured-phd/archaeology.html www.nuigalway.ie/courses/research-postgraduate-programmes/archaeology.html
Bacteriology	Structured PhD (ft), PhD (pt), MD (ft & pt), MSc (ft & pt)	www.nuigalway.ie/courses/research-postgraduate-programmes/structured-phd/bacteriology.html www.nuigalway.ie/courses/research-postgraduate-programmes/bacteriology.html
Biochemistry	Structured PhD (ft), PhD (pt) & MSc	www.nuigalway.ie/courses/research-postgraduate-programmes/structured-phd/biochemistry.html www.nuigalway.ie/courses/research-postgraduate-programmes/biochemistry.html
Bioinformatics	Structured (ft), MSc (ft & pt)	www.nuigalway.ie/courses/research-postgraduate-programmes/structured-phd/bioinformatics.html www.nuigalway.ie/courses/research-postgraduate-programmes/bioinformatics.html
Bioinnovate, Bioinnovation	MSc (ft)	www.bioinnovate.ie www.nuigalway.ie/courses/research-postgraduate-programmes/bioinnovation.html

Programme listings are correct at time of going to press. For updates, please visit www.nuigalway.ie/courses

Subject area	Degree(s) available (ft = full-time; pt = part-time)	Website/s (for detailed information, including potential supervisor[s] and their research interests)
Biomedical Engineering and Regenerative Medicine (BMERM)	Structured PhD (ft)	www.nuigalway.ie/courses/research-postgraduate-programmes/structured-phd/biomedicalengineeringandregenerativemedicinestructuredphd
Biomedical Engineering	Structured PhD (ft & pt), MEngSc (ft & pt), MSc (ft), PhD (pt), ME (ft), MAppSc (ft & pt)	www.nuigalway.ie/courses/research-postgraduate-programmes/structured-phd/mech-bio.html www.nuigalway.ie/courses/research-postgraduate-programmes/phd-and-masters/mechanical-biomedical-engineering.html
Biomedical Engineering Science	Structured PhD (ft)	www.nuigalway.ie/courses/research-postgraduate-programmes/structured-phd/biomedical-engineering-science.html
Biostatistics	Structured PhD (ft), MSc (ft & pt)	www.nuigalway.ie/courses/research-postgraduate-programmes/structured-phd/biostatistics.html/ www.nuigalway.ie/courses/research-postgraduate-programmes/biostatistics.html
Botany/Plant Science	Structured PhD (ft), MSc (ft & pt)	www.nuigalway.ie/courses/research-postgraduate-programmes/structured-phd/botany.html/ www.nuigalway.ie/courses/research-postgraduate-programmes/botany-plant-science.html
Business Information Systems	MSc (ft & pt)	www.nuigalway.ie/courses/research-postgraduate-programmes/business-information-systems.html
Business, Public Policy and Law	Structured PhD (ft)	www.nuigalway.ie/courses/research-postgraduate-programmes/structured-phd/business-public-policy-law.html
Cancer Research	Structured MSc	www.nuigalway.ie/courses/research-postgraduate-programmes/structured-phd/cancer-research.html
Cellular and Molecular Biology	Structured PhD (ft)	www.nuigalway.ie/courses/research-postgraduate-programmes/structured-phd/cellular-molecular-biology.html
Celtic Studies/ Léann Ceilteach	Structured PhD (ft), PhD (pt)	www.nuigalway.ie/courses/research-postgraduate-programmes/structured-phd/celtic-studies.html www.nuigalway.ie/courses/research-postgraduate-programmes/celtic-studies.html
Centre for Excellence in Teaching and Learning (CELT)	PhD (pt), MLitt (pt)	www.nuigalway.ie/courses/research-postgraduate-programmes/celt.html
Chemistry	Structured PhD (ft), Structured Masters, MSc (ft & pt)	www.nuigalway.ie/courses/research-postgraduate-programmes/structured-phd/chemistry.html/ www.nuigalway.ie/courses/research-postgraduate-programmes/structured-phd/chemistry-msc-structured.html www.nuigalway.ie/courses/research-postgraduate-programmes/chemistry.html
Child and Youth Research	Structured PhD (ft)	www.nuigalway.ie/courses/research-postgraduate-programmes/structured-phd/child-youth-research.html

Programme listings are correct at time of going to press. For updates, please visit www.nuigalway.ie/courses

Subject area	Degree(s) available (ft = full-time; pt = part-time)	Website/s (for detailed information, including potential supervisor[s] and their research interests)
Civil Engineering	Structured PhD (ft & pt), PhD (pt), MEngSc (ft & pt), MApplSc (ft & pt), ME (ft)	www.nuigalway.ie/courses/research-postgraduate-programmes/structured-phd/civil-engineering.html www.nuigalway.ie/courses/research-postgraduate-programmes/civil-engineering.html
Classics	Structured PhD (ft), MLitt (ft & pt)	www.nuigalway.ie/courses/research-postgraduate-programmes/structured-phd/classics.html www.nuigalway.ie/courses/research-postgraduate-programmes/classics.html
Cloud Computing Research	MSc (ft & pt)	www.nuigalway.ie/courses/research-postgraduate-programmes/cloud-computing-research.html
Commerce	PhD (ft & pt), MComm (ft & pt), MPhil (pt)	www.nuigalway.ie/courses/research-postgraduate-programmes/commerce-business.html
Digital Arts and Humanities	Structured PhD (ft & pt)	www.nuigalway.ie/courses/research-postgraduate-programmes/structured-phd/digital-arts-humanities.html
Disability Law & Policy	PhD (ft & pt)	www.nuigalway.ie/courses/research-postgraduate-programmes/law-disability-policy.html
Drama and Theatre Studies	Structured PhD (ft), Structured PhD (ft & pt)	www.nuigalway.ie/courses/research-postgraduate-programmes/structured-phd/drama-and-theatre-studies.html www.nuigalway.ie/courses/research-postgraduate-programmes/Drama-and-Theatre-Studies.html
Earth and Ocean Sciences	Structured PhD (ft), MSc (ft & pt)	www.nuigalway.ie/courses/research-postgraduate-programmes/structured-phd/earth-ocean-sciences.html www.nuigalway.ie/courses/research-postgraduate-programmes/earth-ocean-sciences.html
Economics	MLitt (ft & pt)	www.nuigalway.ie/courses/research-postgraduate-programmes/economics-research.html
Education	Structured PhD (ft), MLitt (ft & pt)	www.nuigalway.ie/courses/research-postgraduate-programmes/education-research.html
Electrical and Electronic Engineering	Structured PhD (ft & pt), PhD (pt), MEngSc (ft & pt), MApplSc (ft & pt), ME (ft)	www.nuigalway.ie/courses/research-postgraduate-programmes/structured-phd/electrical-electronic-eng.html www.nuigalway.ie/courses/research-postgraduate-programmes/electrical-electronic-engineering.html
English	Structured PhD (ft & pt), PhD (ft & pt)	www.nuigalway.ie/courses/research-postgraduate-programmes/structured-phd/english.html www.nuigalway.ie/courses/research-postgraduate-programmes/english.html
Environmental Science	MSc (ft & pt)	www.nuigalway.ie/courses/research-postgraduate-programmes/environmental-science.html

Programme listings are correct at time of going to press. For updates, please visit www.nuigalway.ie/courses

Subject area	Degree(s) available (ft = full-time; pt = part-time)	Website/s (for detailed information, including potential supervisor[s] and their research interests)
Film Studies	Structured PhD (ft & pt), PhD (ft & pt), PhD (practice based [ft & pt])	www.nuigalway.ie/courses/research-postgraduate-programmes/structured-phd/film-studies.html www.nuigalway.ie/courses/research-postgraduate-programmes/film-studies.html
French	Structured PhD (ft), MLitt (ft & pt)	www.nuigalway.ie/courses/research-postgraduate-programmes/structured-phd/french.html www.nuigalway.ie/courses/research-postgraduate-programmes/french.html
General Practice	Structured PhD (ft), PhD (pt), MD (ft & pt), MSc (by research, ft & pt)	www.nuigalway.ie/courses/research-postgraduate-programmes/structured-phd/general-practice.html www.nuigalway.ie/courses/research-postgraduate-programmes/general-practice.html
Geography	Structured PhD (ft), MLitt (ft & pt)	www.nuigalway.ie/courses/research-postgraduate-programmes/structured-phd/geography.html www.nuigalway.ie/courses/research-postgraduate-programmes/geography.html
German	Structured PhD (ft), MLitt (ft & pt)	www.nuigalway.ie/courses/research-postgraduate-programmes/structured-phd/german.html www.nuigalway.ie/courses/research-postgraduate-programmes/german.html
Global Women's Studies	Structured PhD (ft)	www.nuigalway.ie/courses/research-postgraduate-programmes/structured-phd/global-womens-studies.html
Health Promotion	Structured PhD (ft & pt), PhD (ft & pt), MLitt (ft & pt), MD (ft & pt), MPhil (ft & pt), MPhil in Social Care (ft & pt)	www.nuigalway.ie/courses/research-postgraduate-programmes/structured-phd/health-promotion.html www.nuigalway.ie/courses/research-postgraduate-programmes/structured-phd/health-promotion-med.html www.nuigalway.ie/courses/research-postgraduate-programmes/health-sciences-health-promotion.html www.nuigalway.ie/courses/research-postgraduate-programmes/health-sciences-health-promotion.html
Health Psychology Practice	Structured PhD (ft)	www.nuigalway.ie/courses/research-postgraduate-programmes/structured-phd/health-psychology-practice.html
Health Sciences—Social Care	MPhil (ft & pt)	www.nuigalway.ie/courses/research-postgraduate-programmes/health-sciences-social-care.html
History	Structured PhD (ft & pt), MLitt (ft & pt), PhD (ft & pt)	www.nuigalway.ie/courses/research-postgraduate-programmes/structured-phd/history.html www.nuigalway.ie/courses/research-postgraduate-programmes/history.html
Human Rights	PhD (ft & pt)	www.nuigalway.ie/courses/research-postgraduate-programmes/law-human-rights.html

Programme listings are correct at time of going to press. For updates, please visit www.nuigalway.ie/courses

Subject area	Degree(s) available (ft = full-time; pt = part-time)	Website/s (for detailed information, including potential supervisor[s] and their research interests)
Industrial Engineering	Structured PhD (ft & pt), PhD (pt), MEngSc (ft & pt), MApplSc (ft & pt)	www.nuigalway.ie/courses/research-postgraduate-programmes/structured-phd/industrial-engineering.html www.nuigalway.ie/courses/research-postgraduate-programmes/phd-and-masters/industrial-engineering.html
Information Technology	Structured PhD (ft & pt), PhD (pt), MSc (ft & pt)	www.nuigalway.ie/courses/research-postgraduate-programmes/structured-phd/information-technology.html www.nuigalway.ie/courses/research-postgraduate-programmes/information-technology.html
Insight Centre for Data Analytics [Engineering]	Structured PhD (ft & pt), PhD (pt), MApplSc (ft & pt), MEngSc (ft & pt)	www.nuigalway.ie/courses/research-postgraduate-programmes/structured-phd/insight-eng-research.html www.nuigalway.ie/courses/research-postgraduate-programmes/phd-and-masters/insight-engineering.html
Insight Centre for Data Analytics [Science]	PhD (ft & pt)	www.nuigalway.ie/courses/research-postgraduate-programmes/phd-and-masters/insight-science.html
International Cultural Studies	Structured PhD (ft)	www.nuigalway.ie/courses/research-postgraduate-programmes/structured-phd/International-Cultural-Studies.html
Irish Language Studies	Structured PhD (ft)	www.nuigalway.ie/courses/research-postgraduate-programmes/structured-phd/irish-language-studies.html
Irish Studies	Structured PhD (ft & pt), MLitt (ft & pt), PhD (ft & pt)	www.nuigalway.ie/courses/research-postgraduate-programmes/structured-phd/irish-studies.html www.nuigalway.ie/courses/research-postgraduate-programmes/irish-studies.html
Italian	Structured PhD (ft), MLitt (ft & pt)	www.nuigalway.ie/courses/research-postgraduate-programmes/structured-phd/italian.html www.nuigalway.ie/courses/research-postgraduate-programmes/italian.html
Key Enabling Technologies	Structured Masters (ft & pt)	www.nuigalway.ie/courses/research-postgraduate-programmes/structured-phd/key-enabling-technologies.html
Latin American Studies	Structured PhD (ft)	www.nuigalway.ie/courses/research-postgraduate-programmes/structured-phd/latin-american-studies.html
Law	Structured PhD, PhD (ft & pt), LL.M (ft & pt)	www.nuigalway.ie/courses/research-postgraduate-programmes/structured-phd/law.html www.nuigalway.ie/courses/research-postgraduate-programmes/law.html

Programme listings are correct at time of going to press. For updates, please visit www.nuigalway.ie/courses

Subject area	Degree(s) available (ft = full-time; pt = part-time)	Website/s (for detailed information, including potential supervisor[s] and their research interests)
Learning Sciences	Structured PhD (ft)	www.nuigalway.ie/courses/research-postgraduate-programmes/structured-phd/learning-sciences.html
Marine Sciences	Structured PhD (ft)	www.nuigalway.ie/courses/research-postgraduate-programmes/structured-phd/marine-sciences.html
Marketing	MBS (pt)	www.nuigalway.ie/courses/research-postgraduate-programmes/marketing.html
Mathematics	Structured PhD (ft), MLitt (ft & pt), MSc (ft & pt)	www.nuigalway.ie/courses/research-postgraduate-programmes/structured-phd/mathematics.html www.nuigalway.ie/courses/research-postgraduate-programmes/structured-phd/science-mathematics.html www.nuigalway.ie/courses/research-postgraduate-programmes/maths.html www.nuigalway.ie/courses/research-postgraduate-programmes/science-maths.html
Mechanical Engineering	Structured PhD (ft & pt), PhD (pt), MEngSc (ft & pt), MApplSc (ft & pt), ME (ft), MSc (ft)	www.nuigalway.ie/courses/research-postgraduate-programmes/structured-phd/mech-bio.html www.nuigalway.ie/courses/research-postgraduate-programmes/phd-and-masters/mechanical-biomedical-engineering.html
Medicine	Structured PhD (ft), PhD (pt), MD (ft & pt)	www.nuigalway.ie/courses/research-postgraduate-programmes/structured-phd/medicine.html www.nuigalway.ie/courses/research-postgraduate-programmes/medicine.html
Medieval Studies	Structured PhD	www.nuigalway.ie/courses/research-postgraduate-programmes/structured-phd/medieval-studies.html
Microbiology	Structured PhD (ft), MSc (ft & pt)	www.nuigalway.ie/courses/research-postgraduate-programmes/structured-phd/microbiology.html www.nuigalway.ie/courses/research-postgraduate-programmes/microbiology.html
NCBES [Science]	PhD (pt), MSc (ft & pt)	www.nuigalway.ie/courses/research-postgraduate-programmes/science-ncbes.html
Nua-Ghaeilge	Struchtúrtha PhD (pt), MLitt (ft & pt)	www.nuigalway.ie/courses/research-postgraduate-programmes/structured-phd/nua-ghaeilge.html www.nuigalway.ie/courses/research-postgraduate-programmes/nua-ghaeilge-irish.html
Nursing & Midwifery	Structured PhD (ft), PhD (pt), MPhil (ft & pt)	www.nuigalway.ie/courses/research-postgraduate-programmes/structured-phd/nursing-midwifery.html www.nuigalway.ie/courses/research-postgraduate-programmes/nursing.html

Programme listings are correct at time of going to press. For updates, please visit www.nuigalway.ie/courses

Subject area	Degree(s) available (ft = full-time; pt = part-time)	Website/s (for detailed information, including potential supervisor[s] and their research interests)
Obstetrics and Gynaecology	Structured PhD (ft), PhD (pt), MD (ft & pt)	www.nuigalway.ie/courses/research-postgraduate-programmes/structured-phd/obstetrics-gynaecology.html www.nuigalway.ie/courses/research-postgraduate-programmes/obstetrics-gynaecology.html
Occupational Health and Hygiene	MSc (ft & pt)	www.nuigalway.ie/courses/research-postgraduate-programmes/occupational-health-hygiene.html
Occupational Therapy	Structured PhD (ft & pt), PhD (ft & pt), MPhil (ft & pt)	www.nuigalway.ie/courses/research-postgraduate-programmes/structured-phd/occupational-therapy.html www.nuigalway.ie/courses/research-postgraduate-programmes/phd-and-masters/health-sciences-occupational-therapy.html
Old and Middle Irish	Structured PhD (ft & pt), MLitt (ft & pt), PhD (ft & pt)	www.nuigalway.ie/courses/research-postgraduate-programmes/structured-phd/old-middle-irish.html www.nuigalway.ie/courses/research-postgraduate-programmes/old-middle-irish.html
Paediatrics	Structured PhD (ft), PhD (pt), MD (ft & pt)	www.nuigalway.ie/courses/research-postgraduate-programmes/structured-phd/paediatrics.html www.nuigalway.ie/courses/research-postgraduate-programmes/paediatrics.html
Pathology	Structured PhD (ft), PhD (pt), MD (ft & pt)	www.nuigalway.ie/courses/research-postgraduate-programmes/structured-phd/pathology.html www.nuigalway.ie/courses/research-postgraduate-programmes/pathology.html
Perception, Cognition and Action	Structured PhD (ft & pt)	www.nuigalway.ie/courses/research-postgraduate-programmes/structured-phd/perception-cognition-action.html
Pharmacology and Therapeutics	Structured PhD (ft), PhD (pt), MSc (ft & pt), MD (ft & pt)	www.nuigalway.ie/courses/research-postgraduate-programmes/structured-phd/pharmacology-therapeutics.html www.nuigalway.ie/courses/research-postgraduate-programmes/pharmacology-therapeutics.html
Philosophy	Structured PhD (ft & pt), MLitt (ft & pt), PhD (ft & pt)	www.nuigalway.ie/courses/research-postgraduate-programmes/structured-phd/philosophy.html www.nuigalway.ie/courses/research-postgraduate-programmes/philosophy.html
Philosophy of Art and Culture (inter-institutional)	Structured PhD (ft & pt)	www.nuigalway.ie/courses/research-postgraduate-programmes/structured-phd/philosophy-art-culture.html
Physics	Structured PhD (ft), MSc (ft & pt)	www.nuigalway.ie/courses/research-postgraduate-programmes/structured-phd/physics.html www.nuigalway.ie/courses/research-postgraduate-programmes/physics.html

Programme listings are correct at time of going to press. For updates, please visit www.nuigalway.ie/courses

Subject area	Degree(s) available (ft = full-time; pt = part-time)	Website/s (for detailed information, including potential supervisor[s] and their research interests)
Physiology	Structured PhD (ft), PhD (ft & pt), MSc (ft & pt)	www.nuigalway.ie/courses/research-postgraduate-programmes/structured-phd/physiology.html www.nuigalway.ie/courses/research-postgraduate-programmes/physiology.html
Plant Agribiosciences	Structured PhD (ft)	http://www.nuigalway.ie/courses/research-postgraduate-programmes/structured-phd/plant-agribiosciences.html
Podiatric Medicine	Structured PhD (ft & pt), PhD (ft & pt), MPhil (ft & pt)	www.nuigalway.ie/courses/research-postgraduate-programmes/structured-phd/podiatry.html www.nuigalway.ie/courses/research-postgraduate-programmes/health-sciences-podiatry.html
Political Science and Sociology	Structured PhD (ft)	www.nuigalway.ie/courses/research-postgraduate-programmes/structured-phd/political-science-sociology.html
Psychiatry	Structured PhD (ft), PhD (pt), MD (ft & pt)	www.nuigalway.ie/courses/research-postgraduate-programmes/structured-phd/psychiatry.html www.nuigalway.ie/courses/research-postgraduate-programmes/psychiatry.html
Psychology	Structured PhD (ft), MLitt (ft & pt), DPsych (pt)	www.nuigalway.ie/courses/research-postgraduate-programmes/structured-phd/psychology.html www.nuigalway.ie/courses/research-postgraduate-programmes/psychology.html
Psychology and Health	Structured PhD (ft)	www.nuigalway.ie/courses/research-postgraduate-programmes/structured-phd/psychology-health.html
Radiology	Structured PhD (ft), PhD (pt), MD (ft & pt), MSc (ft)	www.nuigalway.ie/courses/research-postgraduate-programmes/structured-phd/radiology.html www.nuigalway.ie/courses/research-postgraduate-programmes/radiology.html
REMEDI	Structured PhD (ft), PhD (pt), MSc (ft & pt)	www.nuigalway.ie/courses/research-postgraduate-programmes/structured-phd/remedi.html www.nuigalway.ie/courses/research-postgraduate-programmes/science-remedi.html www.nuigalway.ie/courses/research-postgraduate-programmes/medicine-remedi.html
Ryan Institute [Science]	MSc (ft & pt)	www.nuigalway.ie/courses/research-postgraduate-programmes/science-mri.html
Social Psychological Science and Cognitive Science	Structured PhD (ft)	www.nuigalway.ie/courses/research-postgraduate-programmes/structured-phd/social-psychological-cognitive-science.html
Sociology & Politics	Structured PhD (ft), MLitt (ft & pt)	www.nuigalway.ie/courses/research-postgraduate-programmes/structured-phd/political-science-sociology.html www.nuigalway.ie/courses/research-postgraduate-programmes/sociology-politics.html

Programme listings are correct at time of going to press. For updates, please visit www.nuigalway.ie/courses

Subject area	Degree(s) available (ft = full-time; pt = part-time)	Website/s (for detailed information, including potential supervisor[s] and their research interests)
Spanish	MLitt	www.nuigalway.ie/courses/research-postgraduate-programmes/spanish.html
Spanish Studies	Structured PhD (ft), MLitt (ft & pt)	www.nuigalway.ie/courses/research-postgraduate-programmes/structured-phd/spanish.html www.nuigalway.ie/courses/research-postgraduate-programmes/spanish.html
Specialist Nursing	Research Masters	www.nuigalway.ie/courses/research-postgraduate-programmes/specialist-nursing.html
Speech and Language Therapy	Structured PhD (ft & pt), PhD (Language Science) (ft & pt), MPhil (ft & pt)	www.nuigalway.ie/courses/research-postgraduate-programmes/structured-phd/speech-language.html www.nuigalway.ie/courses/research-postgraduate-programmes/health-sciences-speech-language-therapy.html
Statistics	Structured PhD (ft), MSc (ft & pt)	www.nuigalway.ie/courses/research-postgraduate-programmes/structured-phd/statistics.html www.nuigalway.ie/courses/research-postgraduate-programmes/statistics.html
Studio Art	PhD (ft & pt)	www.nuigalway.ie/courses/research-postgraduate-programmes/studio-art.html
Surgery	Structured PhD (ft), PhD (pt), MCh (ft & pt), MD (ft & pt)	www.nuigalway.ie/courses/research-postgraduate-programmes/structured-phd/surgery.html www.nuigalway.ie/courses/research-postgraduate-programmes/surgery.html
TechInnovation	PDip (ft)	www.nuigalway.ie/techinnovation
Texts, Contexts, Cultures	Structured PhD (ft)	www.nuigalway.ie/courses/research-postgraduate-programmes/structured-phd/texts-contexts-cultures.html
Women's Studies	MLitt (ft & pt)	www.nuigalway.ie/courses/research-postgraduate-programmes/womens-studies.html
Zoology	Structured PhD (ft), MSc (ft & pt)	www.nuigalway.ie/courses/research-postgraduate-programmes/structured-phd/zoology.html

Programme listings are correct at time of going to press. For updates, please visit www.nuigalway.ie/courses

The application process



- 1. Find a supervisor/PhD project**
- 2. Funding and scholarships**
- 3. Apply online**

1 Find a supervisor/ PhD project

One of the most important parts of choosing a research programme is finding a supervisor who has relevant expertise in your area of interest. You can find potential supervisors and identify the key research interests of our academic staff and researchers by using our online search site: www.nuigalway.ie/findasupervisor

You can use this site to find potential supervisors and identify the key research interests of our academic staff and researchers. Insert a keyword to find a PhD project or supervisor name (see search field box, top right of web-page). For example, inserting the keywords “stem cells” will return these results (partial screenshot shown, more entries will be displayed):

When you find a supervisor who or a project that aligns with your research interests, you should make contact with the relevant academic to discuss matters further. They can also advise you on how to apply to become an NUI Galway research student.

Overview

Undergraduate Courses

Postgraduate Taught Courses

Postgraduate Research Courses

Choosing a Research Programme

[Find a Supervisor/PhD Project](#)

Research Programmes

Structured Programmes

Scholarships

One of the most important parts of choosing a research programme is finding a supervisor who has relevant expertise in your area of interest. When you find a supervisor who, or a project that, aligns with your research interests, you should make contact with the relevant academic to discuss matters further. They can also advise you on how to apply to become an NUI Galway research student.

To help you find potential supervisors/PhD projects and identify the key research interests of our academic staff and researchers, you can use the 'Search' facility below to search by supervisor name(s) or using keyword searches, e.g., history.

stem cells

Download: [COPY](#) | [CSV](#) | [EXCEL](#) | [PDF](#)

Supervisor	Interests	Theme	Sub-Theme
Joshi, Prof Lokesh Vice President For Research	Sugars coat every living cell. The lab is investigating the role of sugar-protein interactions in health and diseases. Current projects involve	Biomedical Science and Engineering	Cancer Biology, Diagnostics and Therapeutics

Fig 1: Screenshot from “Find a supervisor” website

Professor Lokesh Joshi, whose research profile appears below, is NUI Galway's Vice President for Research. He leads the University's research mission that firmly places NUI Galway among the top research-led universities globally.

You can then download/export your results in different formats (e.g., PDF or Excel). The output file includes details of the research theme and sub-theme of our current research projects. Contacts for each are also listed.

This search site links to IRIS, NUI Galway's Institutional Research Information System, which enables researchers and academic staff to maintain an up-to-date CV and showcase their research expertise. For example, clicking on the hyperlink under Professor Lokesh Joshi's name in the "Find our supervisor/PhD project" Supervisor column (see Fig 1) will bring you to Professor Joshi's entry in the IRIS database:

This details the researcher's biography, and clicking on the **Research tab (link)** in this section will give you more important information. Other links to view include **Publications** (Book Chapters, Peer Reviewed Journals, Conference Papers, and so on) (see Fig 2).

Visit www.nuigalway.ie/research-office/online-systems/irish for more information on this innovative online system.

HOME > RESEARCH > PEOPLE > NATURAL SCIENCES

NATURAL SCIENCES

Overview

Research Areas

Facilities

People

About Researcher Profiles

HR Excellence in Research

Research Office

Prof Lokesh Joshi

B.Sc., M.Sc., Ph. D

Contact Details

Vice President For Research
SCHOOL OF NATURAL
SCIENCES
NUI GALWAY

T: Ext. 5768
E: lokesh.joshi@nuigalway.ie

Biography

Research

Publications

Professional

Teaching

Collaborators

Research Interests

PRINCIPAL AREAS OF RESEARCH

My principal focus of research is integration of life sciences, chemistry, engineering, medicine and informatics in the field of Glycosciences to discover and develop novel molecules and relevant technologies for industrial and clinical purposes. The research group is developing technologies that are amenable for HTP methods. These Technologies are being applied to host-pathogen biology, stem cell, cancer/apoptosis, immunology and biopharmaceutical manufacturing processes.

Fig 2: Screenshot from "Find a supervisor/PhD project" website

2 Funding and scholarships

University scholarships

The Hardiman PhD Scholarships

www.nuigalway.ie/hardiman-scholarships

The Hardiman PhD Scholarships are fully-funded, four-year PhD scholarships, focused on five key areas of world class research in which the University offers leading expertise. The primary strategic aim is to attract the best students to NUI Galway and to support their development as innovative individuals who will contribute globally to economic, cultural and social development. The value of the scholarship is a stipend of €16,000 per annum plus fees. Successful applicants will be expected to have a first or upper second class honours primary degree or equivalent. Shortlisting of applicants will be undertaken by a panel and those shortlisted will be interviewed. Successful candidates will register for a structured PhD in one of the five Colleges of the University.

NUI Galway College scholarships

Information on PhD scholarships is available from the following College websites:

College of Arts, Social Sciences and Celtic Studies

www.nuigalway.ie/colleges-and-schools/arts-social-sciences-and-celtic-studies/phd-research-degrees/scholarships/

College of Business, Public Policy and Law

www.nuigalway.ie/business-public-policy-law/school-of-law/about/scholarships/

College of Engineering and Informatics

www.nuigalway.ie/engineering-informatics

College of Medicine, Nursing and Health Sciences

www.nuigalway.ie/medicine-nursing-and-health-sciences

College of Science

www.nuigalway.ie/science/postgraduatestructuredprogrammes/scholarships/

External scholarships

Irish Research Council (IRC)

www.research.ie

Provides postgraduate funding to undertake a PhD programme in all disciplines, under the following schemes:

- **Irish Research Council Government of Ireland Postgraduate Scholarship Scheme:** supports suitably qualified Research Masters and Doctoral candidates pursuing or intending to pursue full-time research in any discipline.
- **Employment Based Postgraduate Programme:** funding for companies to employ high-calibre researchers to work on site with them.
- **Enterprise Partnership Scheme:** fellowship co-funded by IRC and an Enterprise Partner to offer researchers the opportunity to gain additional beneficial experience and insight into the commercial arena while completing their research.
- **Enterprise Partnership Programme:** an innovative initiative where the Council links with an Enterprise Partner to award co-funded postgraduate scholarships to highly promising researchers in Ireland. By working closely with an Enterprise Partner, researchers benefit from an enhanced research experience as well as having the opportunity to learn key transferable skills relevant to career formation.





Wellcome Trust

- **Doctoral Studentships:** this scheme enables individuals to undertake a humanities or social science doctoral degree in any area of human and animal health. <https://wellcome.ac.uk/funding/doctoral-studentships>
- **Research Training Fellowships:** this scheme supports medical, dental, veterinary or clinical psychology graduates who wish to undertake substantial training through high-quality research in an appropriate unit or clinical research facility to gain a PhD or MD qualification. <https://wellcome.ac.uk/funding/research-training-fellowships>

NUI Awards

www.nui.ie/awards/postgraduates.asp

The National University of Ireland also makes awards available to postgraduate research students.

Universities Ireland North/South Scholarship Scheme

universitiesireland.ie/bursaries-scholarships/

The aim of this collaborative scheme is to encourage outstanding students from the Republic of Ireland and Northern Ireland to cross the border to undertake postgraduate study and experience life in the other Irish jurisdiction.

International scholarships

NUI Galway International Student Scholarships

www.nuigalway.ie/international-students/feesfinance/internationalscholarships

NUI Galway is committed to attracting high calibre students from around the world. To this end, the University offers a range of based scholarships to students from a number of countries, in line with our strategic international priorities.

Other external funding sources for international students

Irish Fulbright Commission: Fulbright US Student Awards

www.fulbright.ie

The Fulbright Commission of Ireland annually awards grants to Irish and EU postgraduate students, scholars, and professionals to study, research and lecture in the United States, and for American students to do the same in Ireland.

The George J. Mitchell Scholarships

www.us-irelandalliance.org

Up to 12 Mitchell Scholars are chosen annually for one year of postgraduate study in any discipline offered by institutions of higher learning in Ireland and Northern Ireland. Applicants are judged on three criteria: scholarship, leadership and a sustained commitment to community and public service.

The Mitchell Scholars Program provides tuition, accommodation and a stipend for living expenses and travel. To be eligible for consideration in the Mitchell Scholarship Program, a candidate must:

- be a citizen of the United States of America
- be at least 18 years of age, but not yet 30 years
- hold a bachelor's degree from an accredited college or university (not necessarily in the US) before beginning study as a Mitchell Scholar

US Federal Aid Funding (US citizens only)

www.nuigalway.ie/international-students/feesfinance/federalaid/

NUI Galway is approved by the US Government to certify financial aid under the William D Forde Direct Loan Program. There are several federal programs available for US citizens (or eligible non-citizens) who are enrolled at NUI Galway at least half-time in a Degree, Masters or PhD program as follows: Federal Direct Loans (Subsidised & Unsubsidised); Federal Direct PLUS loans. For details on eligible programmes and grants, please see the website.

Other external funding sources for international students

www.nuigalway.ie/international-students/feefinance/internationalscholarships/

Irish Aid Fellowship Training Programme

This is one of the instruments used by Irish Aid to support capacity development in Ireland's programme countries in Africa and Asia. The FTP involves the award of fellowships to suitably qualified candidates from the target countries to undertake studies usually at postgraduate level in fields such as development studies, rural development, health care and education, and other disciplines which are likely to support and enhance the capacity of recipients to contribute to the development effort in their own countries. Irish Aid's partner countries are Ethiopia, Uganda, Tanzania, Zambia, Mozambique, Lesotho, Palestine, Timor Leste, Vietnam and Malawi. For further information on applications and approved courses please go to www.icosirl.ie

China Scholarship Council

<http://en.csc.edu.cn>

The China Scholarship Council (CSC) is a non-profit institution with legal person status affiliated with the Ministry of Education. The objective is to provide financial assistance to Chinese citizens wishing to study abroad and to foreign citizens wishing to study in China in order to develop educational, scientific, technological and cultural exchanges, and economic and trade cooperation, between China and other countries, and to strengthen the friendship and understanding between Chinese people and the peoples of all other countries.

Funding for Indian students

www.nuigalway.ie/international-students/feefinance/internationalscholarships/

NUI Galway offers students from India a diverse range of scholarships, including the *Max Arthur Macauliffe Special Merit Scholarship* and the *Sir Peter Freyer Special Merit Scholarship*. Please visit the website listed above for further information.

Funding for Australian students

The General Sir John Monash Awards:

www.monashawards.org/award-application

A minimum of 10 postgraduate scholarships are available, per year, at a non-Australian university. Only Australian citizens graduating from Australian universities are eligible to apply. The John Monash Scholarships are one of Australia's most prestigious awards, recognizing potential leaders in all fields. In awarding John Monash Scholarships, factors considered include outstanding intellect, leadership, citizenship, a well-defined research project at a non-Australian University, the significance of the applicant's potential contribution to their field and to the community, and referee reports outlining the applicant's abilities.

Education in Ireland

www.educationinireland.com/en

This government agency is responsible for promoting Irish education overseas. The website lists various funding opportunities for international students studying in Ireland.

Science Without Borders scholarships for Brazilian students

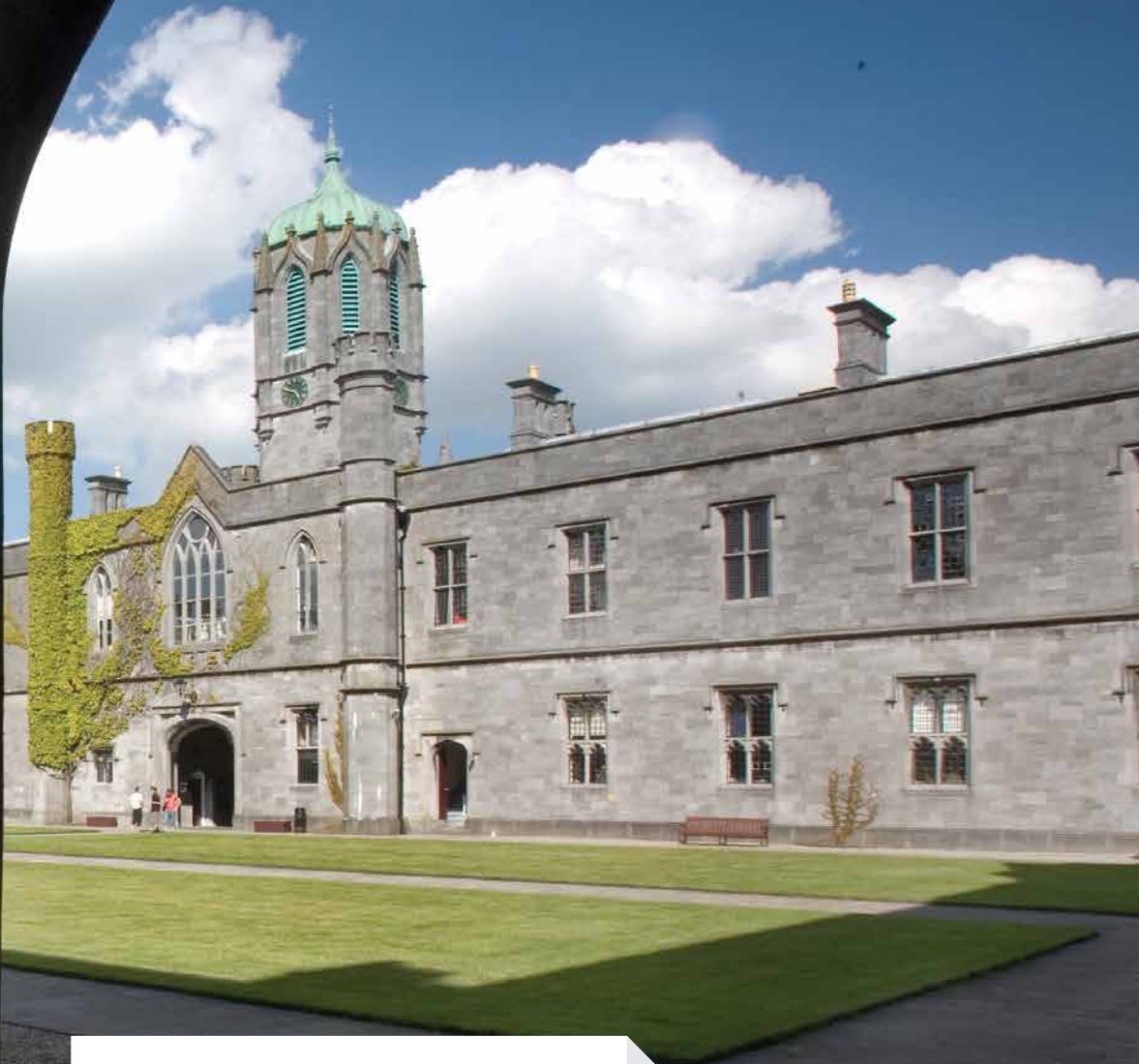
www.nuigalway.ie/international-students/yourcountry/brazil/

Irish Aid scholarships (for developing countries)

www.irishaidfellowships.ie

Visit www.nuigalway.ie/international-students/feefinance/internationalscholarships/ for links to these other funding bodies:

- The Paras Education foundation (TPEF)
- European Union
- The Wellcome Trust
- Irish Research Council
- The Health Research Board
- International Scholarship Resources
- Open Society Foundations
- Research Careers Ireland



General information/links

See also: www.nuigalway.ie/courses/fees-and-funding/funding.html#tab3 for other funding information, including short-term funding opportunities and travel grants.

- **Bioinnovate Ireland Fellowship:** This is a specialist medical device innovation programme: www.bioinnovate.ie
- **www.revenue.ie:** This website provides information on how income arising from a scholarship is exempt from tax.
- **www.studentfinance.ie:** This website has information on financial support for further and higher education.
- **Student Universal Support Ireland (SUSI):** Applications for student grants can be made at www.susi.ie

3 Apply online

Online application (via PAC)

Applications to most postgraduate programmes at NUI Galway are made online via the **Postgraduate Applications Centre (PAC)**. PAC opens on 1 November 2016 to accept applications for entry to the 2017–18 academic year. PAC manages the application function for NUI Galway, and NUI Galway retains the decision making function regarding admission to its programmes. Prospective students can access the system through PAC on www.pac.ie/nuigalway (the online form is easy to use and you will be guided through the system step-by-step). You will require an active email account to use the system. Applicants select the PAC code(s) for the programme(s) that they are interested in. These are indicated alongside the programme listings online (www.nuigalway.ie/courses/research-postgraduate-programmes).

Applicants may (but are not obliged to) apply for three research programmes (you can mix traditional research programmes with Structured PhDs) when making an application to NUI Galway via PAC. Your applications do not need to be ranked in order of preference, as applications are assessed on a simultaneous basis. The cost of applying is **€50**, and this is a non-refundable application processing fee payable to PAC.

Supporting documents

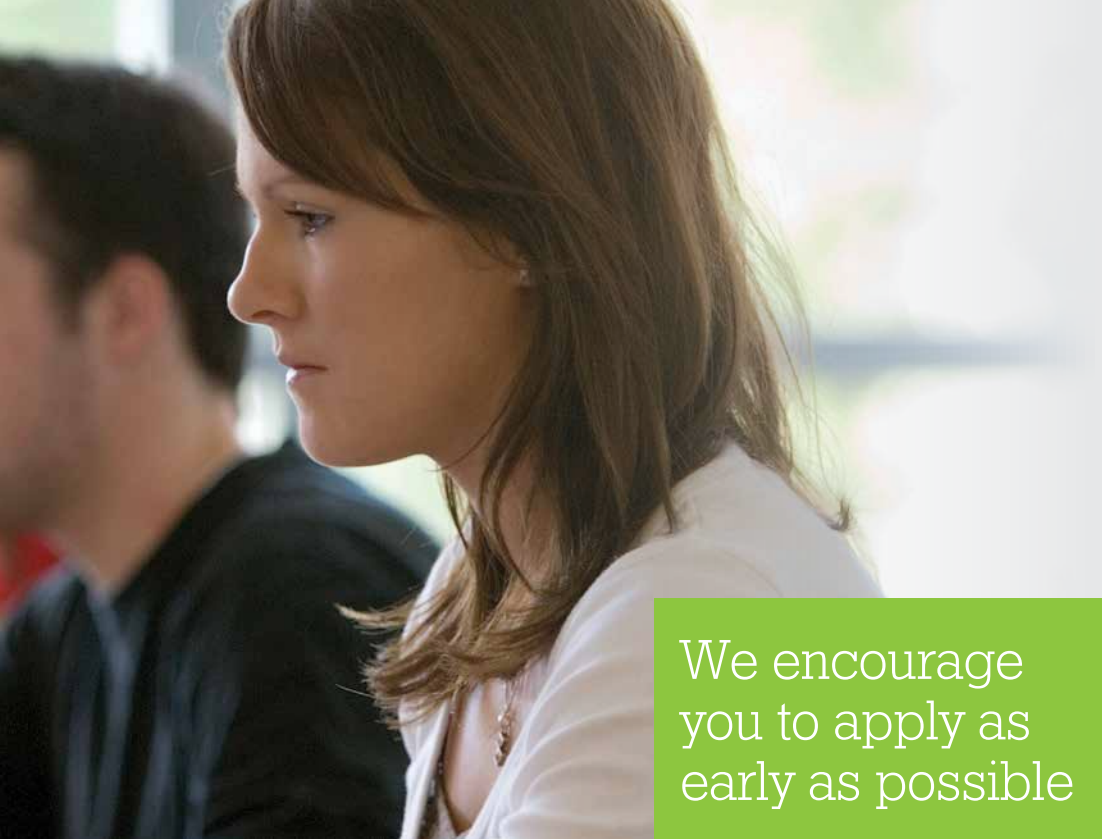
When making an online application to PAC, some programmes require additional documentation to supplement your application, e.g., an essay, samples of work, a CV.

To see what supporting documents, if any, are required for your programme, please visit www.nuigalway.ie/postgrad/pac_supp_docs.html

All supporting documentation (specifying the PAC application number you will be assigned) relevant to the application may be posted to PAC at the following address:

Postgraduate Applications Centre,
1 Courthouse Square, Galway, Ireland

Alternatively, you may upload supporting documents to your online application via your PAC account. Please note that if uploading transcripts, only **certified** copies will be accepted.



We encourage
you to apply as
early as possible

Other application routes

Some of our programmes are applied to using different means than PAC. These alternative routes will be clearly listed on the relevant programme page in this prospectus and in the online course listing (www.nuigalway.ie/courses/research-postgraduateprogrammes).

Closing dates for applications (and late applications)

As a research applicant, you are advised, in the first instance prior to making an online application, to consult with the academic discipline, School or Research Centre at NUI Galway in which you intend to do your research. At this stage, you should have prepared an outline proposal for submission for the department to consider and support. Generally there is no closing date for research applications. However, applications for the PhD degree in the traditional format (i.e., non-Structured PhD) in the College of Arts, Social Sciences, and Celtic Studies are considered for students commencing their programmes in September and January only. Only applications received before mid-July and mid-November respectively in the year will meet these commencement requirements.

NOTE: Structured PhD applicants in the College of Arts, Social Sciences and Celtic Studies must apply by mid-July to commence in September.

In a small number of cases, a closing date has been set up for research programme(s)—you are advised, therefore, to check the specific research course online that you want to apply to in case a closing date has been added:

www.nuigalway.ie/courses

Please also allow at least four weeks, from the date we receive your research application to when you can expect to receive notification of whether you have been offered a place.

Recommendations

You should give yourself plenty of time in which to apply, particularly if you are applying from outside of the European Union (EU), in which case you need to apply for a student visa. You should also allow sufficient time to make any financial, travel and accommodation arrangements if you are offered a place. We recommend that you apply early in the year (January/February) for programmes that start in the autumn (September/October).

www.nuigalway.ie/courses/how-to-apply

Student profile

A little about our students

“My research addresses the development and evolution of vertebrates. This research will help us to understand a fundamental issue of evolutionary developmental biology.

The learning environment at NUI Galway is excellent, with a variety of competitive, interactive and multidisciplinary research opportunities available across the campus. The postgraduate intellectual community in the university is very good. There are plenty of seminars, poster presentations, research workshop events, and science festivals throughout the year.

NUI Galway is a high calibre institution for research and teaching activities, with an excellent reputation in Europe and a good global ranking. The campus is truly international, and scholarships are available for a large number of students. For me, the best part of NUI Galway is its excellent research infrastructure and eminent faculty, and Galway city itself, which has a truly international population and is one of Ireland's most vibrant cities.”

Santosh Kumar Maharana

PhD (Developmental Biology & Stem Cells)

Hardiman Research Scholarship recipient

Irish Research Council Fellowship recipient





Quay Street, Galway City

Postgraduate fees

Postgraduate tuition fees

Fees quoted in the table below, relate to the 2016–17 academic year and are all per annum fees. Fee levels have remained unchanged for the past five years, and 2017–18 levels are not expected to increase by more than the average cost-of-living increase. Fees listed below are indicative of the general fee range, per annum, for each College.

IMPORTANT: some specific courses will have a higher fee than the top end of the range in the table; therefore, please check www.nuigalway.ie/fees for individual course fees.

Tuition fees for international (non-EU*) students are listed on www.nuigalway.ie/fees

*An EU student is defined as an EU national (i.e., holding an EU passport/or birth certificate) who has been ordinarily resident in an EU member state for at least three of the five years immediately preceding their entry to the third level course. For more information on EU vs. non-EU status, please see: www.nuigalway.ie/fees

Methods of payment

EU fees may be paid securely online when registering using a debit or credit card. Alternatively, you can request a bank giro to pay your fees online: log into your student portal at www.nuigalway.ie/fees, and click on the Pay Your Fees link. EU fees may be paid in two equal instalments—50% on registration and 50% by 31 January of the following year. If you are being funded by a SUSI grant or private source, please provide written evidence of this funding to the Fees Office by 31 October annually.

Tax relief

Full- and part-time students may be entitled to tax relief on tuition fees. Applications for tax relief on course fees paid must be made using an application form available from the Revenue Commissioners (see www.revenue.ie). The maximum amount of tax relief on tuition fees is €7,000 per annum.

TUITION FEES 2016–17 FOR RESEARCH PROGRAMMES

Qualification	EU full-time	€	EU part-time	€	NON EU full-time	€
College of Arts, Social Sciences, and Celtic Studies						
PhD		4,275		2,250		13,250
Structured PhD		4,275		2,250		13,250
MLitt		4,275		2,250		3,250
College of Business, Public Policy and Law						
PhD		4,275		2,250		13,250
Structured PhD		4,275		2,250		13,250
M. Econ. Sc.		4,275		2,250		13,250
College of Engineering and Informatics						
PhD		4,529		2,320		13,750
Structured PhD		4,529		2,320		13,750
M. Eng. Sc.		4,529		2,320		13,750
College of Medicine, Nursing and Health Sciences						
PhD		4,529		2,320		13,750
Structured PhD		4,529		2,320		13,750
MD		5,345		2,785		13,750
College of Science						
PhD		4,529		2,320		13,750
Structured PhD		4,529		2,320		13,750
MSc		4,529		2,320		13,750

Useful links

Postgraduate Admissions Office

General queries

T: +353 91 492 844

E: postgradadmissions@nuigalway.ie
www.nuigalway.ie/postgrad

Research programmes

T: +353 91 495 332

E: pgresearch@nuigalway.ie

Other useful contacts

Main NUI Galway Switchboard

T: +353 91 524 411 **F:** +353 91 525 700

www.nuigalway.ie | www.oegaillimh.ie

Accommodation and Welfare Office

Áras Uí Chathail, NUI Galway

T: +353 91 492 364 **E:** teresa.kelly@nuigalway.ie

Adult Education Office

T: +353 91 492 144 **E:** adconted@nuigalway.ie

Alumni Office

T: +353 91 493 750 **E:** alumni@nuigalway.ie

Career Development Centre

T: +353 493 589

www.nuig.gradireland.com/home.html

www.nuigalway.ie/careers/

Disability Support Service

T: + 353 91 493 541 **E:** disability@nuigalway.ie

Fees Office, Áras Uí Chathail

T: +353 91 492 386 **F:** +353 91 495 553

E: fees@nuigalway.ie

Graduate Studies Office

T: +353 91 495 822

E: sandra.donohue@nuigalway.ie
www.nuigalway.ie/graduatestudies

International Affairs Office

T: +353 91 495 277

E: international@nuigalway.ie

Information Solutions and Services

T: +353 91 493 777 **E:** servicedesk@nuigalway.ie
www.nuigalway.ie/information-solutions-and-services

Mature Students Office

Áras Uí Chathail **T:** +353 91 492 695

E: maturestudents@nuigalway.ie

Postgraduate Applications Centre (PAC)

1 Courthouse Square, Galway, Ireland

T: +353 91 549 260 **F:** +353 91 563 056

www.pac.ie/nuigalway | Open: 9.30am–5.00pm

Student Information Desk (SID)

T: +353 495 999 **E:** sid@nuigalway.ie

www.nuigalway.ie/sid

Student Services Incl.: childcare, chaplains, counsellors, societies, clubs, Student Health Unit

T: +353 91 492 364

Useful Links

Accommodation Office, NUI Galway

www.nuigalway.ie/accommodation

Centre for Excellence in Learning and Teaching

www.nuigalway.ie/celt

Education in Ireland (information about the Irish education system)

www.educationinireland.ie

Fees Office, NUI Galway

www.nuigalway.ie/fees

International Affairs Office, NUI Galway

www.nuigalway.ie/international

Irish Naturalisation & Immigration Service (study visa advice)

www.inis.gov.ie

Postgraduate Applications Centre

www.pac.ie

Registration Office

www.nuigalway.ie/registration/

Research Accounting

www.nuigalway.ie/research_accounting/

Research Office

www.nuigalway.ie/research_accounting/

Technology Transfer Office

www.nuigalway.ie/tto

Biomedical Science Building



Institute for Lifecourse & Society (ILAS)



Park & Ride

Dangan Sports Grounds

North campus

11

16

17

UPPER NEWCASTLE ROAD

Arts/Science Building



Engineering Building



Áras Moyola



QUINCENTENARY BRIDGE

RIVER CORRIB

7

12

14

10

DISTILLERY ROAD

St Anthony's entrance

J.E. Cairnes School of Business & Economics



The Sports Centre



Legend

- 1

James Hardiman Library
- 2

Arts/Science Building
- 3

The Quadrangle
- 4

Arts Millennium Building
- 5

IT Building
- 6

Orbsen Building
- 7

Engineering Building
- 8

Áras na Gaeilge
- 9

Áras na Mac Léinn and Bailey Allen Hall
- 10

Sports Centre
- 11

Corrib Village (student accommodation)
- 12

Áras Moyola
- 13

Bank of Ireland Theatre
- 14

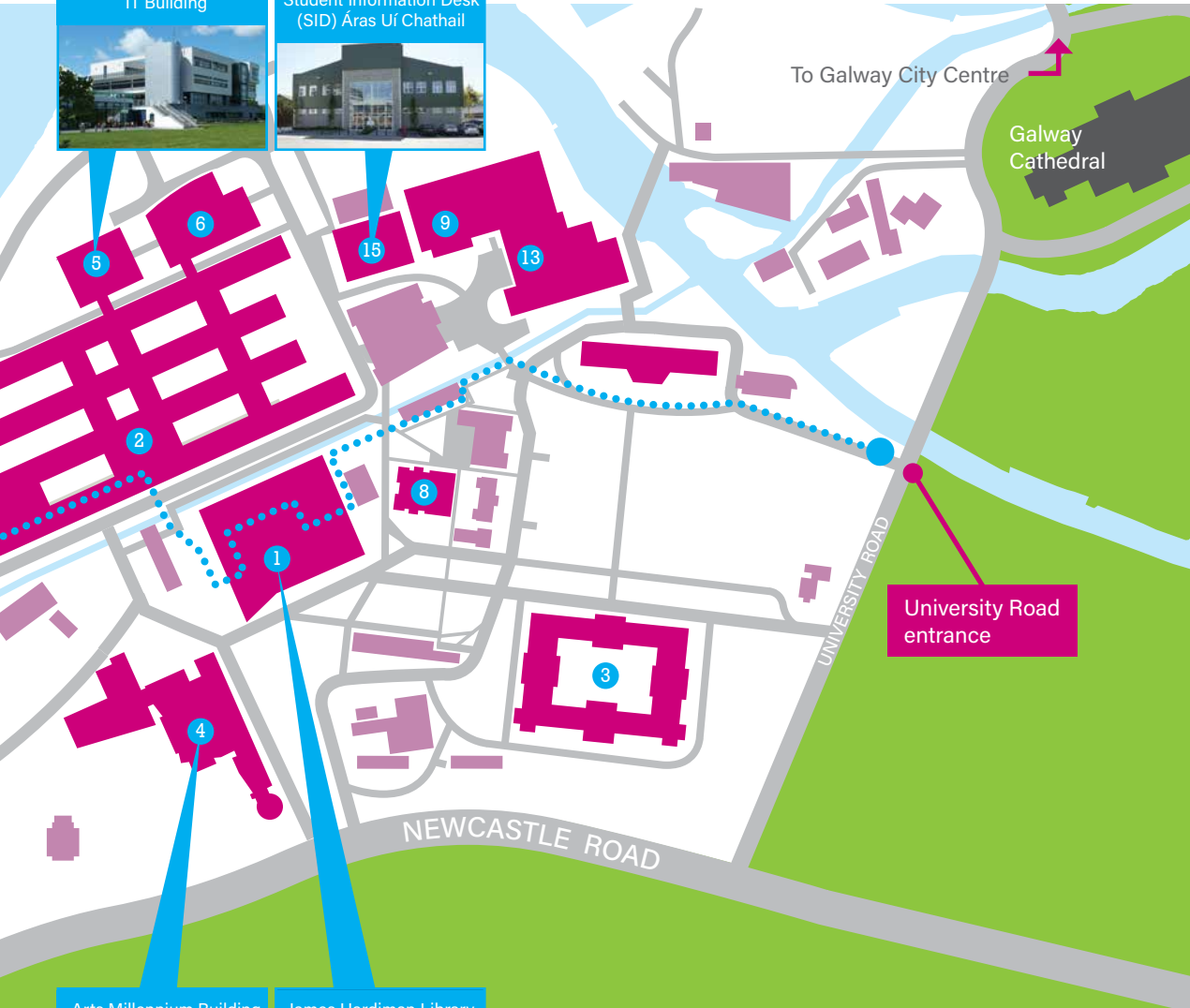
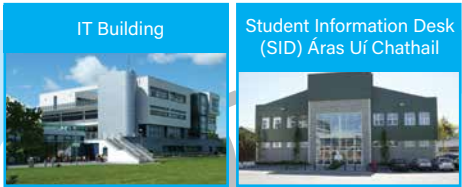
J.E. Cairnes School of Business & Economics
- 15

Student Information Desk (SID)/ Áras Uí Chathail
- 16

Biomedical Sciences
- 17

Institute for Lifecourse & Society (ILAS)

Accessible Route Across Campus (for the mobility impaired)



Newcastle Road entrance

Campus map

Index

	PAGE
A About Galway	18
Accommodation and Welfare Office	87
Adult Learning and Professional Development	87
Alumni Office	87
Anaesthesia	66
Anatomy	66
Apoptosis Research Centre (ARC)	27, 31
Applied Behaviour Analysis	66
Applied Clinical Neurosciences	28
Applied Mathematics	66
Applied Social Sciences & Public Policy	23, 49
Apply, how to	82
Archaeology	66
Archives	59
B Bacteriology	66
Biochemistry	66
Bioinformatics	34, 66
Bioinnovate, Bioinnovation	66
Biomechanics Research Centre	26
Biomedical Engineering and Regenerative Medicine	67
Biomedical Science and Engineering	25–31
Biomedical Engineering Science	67
Biostatistics	35, 67
Botany/Plant Science	67
Business Information Systems	67
Business, Public Policy & Law	67, 86
C Campus development: investing in your future	14–15
Cancer Diagnostics & Therapeutics	27
Cancer Research	67
Careers (Career Development Centre)	87
Celtic Studies/Léann Ceilteach	67, 86
Centre for Astronomy	35, 37
Centre for Bioethical Research and Analysis (COBRA)	53
Centre for Cell Manufacturing Ireland (CCMI)	29, 31
Centre for Chromosome Biology (CCB)	27, 31
Centre for Climate & Air Pollution Studies (C-Caps)	43, 45
Centre for Clinical Health Services Research and Development (CCHSRD)	51, 53
Centre for Disability Law and Policy (CDLP)	50, 53
Centre for Drama, Theatre and Performance	58, 61
Centre for Excellence in Learning and Teaching	67, 87
Centre for Health from Environment	41
Centre for Irish Studies	59, 61
Centre for Pain Research (CPR)	28, 31
Chemistry	67
Child and Youth Research	67
Civil Engineering	68

	PAGE
Classics	68
Cloud Computing	68
Combustion Chemistry Centre (C3)	45
Commerce	67
Commercialising your research	12
Contacts	87
Crystallography Centre	37
CÚRAM	9, 26, 31
D De Brún Centre for Computational Algebra Development	35, 37
Digital Arts and Humanities	68
Disability Law & Policy	68
Disability Support Service	87
Drama and Theatre Studies	58, 68
Earth and Ocean Sciences	68
E Economics	68
Education	68
Electrical and Electronic Engineering	68
Energy Research Centre (ERC)	42, 45
English	68
Environment, Marine and Energy	39–45
Environmental & Natural Resource Economics Research Unit	53
Environmental Science	68
F Facilities for research	20
Fees	86
Film Studies	69
Finding your supervisor	76
French	69
Funding and scholarships	78–79
G Galway 2020	17, 93
Galway City	18
General Practice	69
Geography	69
German	69
Global Women's Studies	69
GlycoDiagnostics and GlycoTherapeutics	28
Glycoscience Research Group	28, 30
Graduate Studies Office	87
H Health Promotion	69
Health Promotion Research Centre	51–53
Health Sciences—Social Care	69
High Performing Computing Centre	34
History	69
How to apply	82
HRB Clinical Research Facility (CRF)	31
HRB Trials Methodology Research Network	31
Human Rights	69
Humanities in Context	55–61
Huston School of Film and Digital Media	61
I Industrial Engineering	70
Informatics, Physical and Computational Sciences	33–37
Information Solutions and Services	87
Information Technology	70

	PAGE
I Innovative research, our	6
Insight, Centre for Data Analytics	34, 70
Insight Research Institute (IRI)	34
Institute for Lifecourse and Society	9, 47, 53
International Affairs Office	87
International Cultural Studies	70
International Students	16
International University, a	10
Irish Centre for High-End Computing (ICHEC)	34, 37
Irish Centre for Social Gerontology (ICSG)	49, 53
Irish Centre for Human Rights	50, 53
Irish Language Studies	70
Irish Naturalisation and Immigration Service	16
Irish Studies	70
Italian	70
K Key Enabling Technologies	70
L Latin American Studies	70
Law	70
Learning Sciences	71
Library	20–21
M Marine Renewable Energy Centre	45
Marine Sciences	71
Marketing	71
Mathematics	35, 71
Mature Students Office	87
Medical Devices & Connected Health	26
Medicine	71
Medieval Studies	71
Microbiology	71
Moore Institute for Research in the Humanities and Social Studies	57, 61
N Nanoscale Biophotonics	37
National Breast Cancer Research Institute (NBCRI)	27
National Centre for Biomedical Engineering Science (NCBES)	26, 31, 71
National Centre for Laser Application (NCLA)	35, 37
Nua-Ghaeilge	71
Nursing & Midwifery	71
Nursing, Specialist	74
O Obstetrics and Gynaecology	72
Occupational Health and Hygiene	72
Occupational Therapy	72
Old and Middle Irish	72
Our Innovative Research	6
P Paediatrics	72
Pathology	72
Perception, Cognition and Action	72
Pharmacology and Therapeutics	72
Philosophy	72
Philosophy of Art and Culture (inter-institutional)	72
Physics	72
Physiology	73
Plant AgriBiosciences	73
Podiatry	73

	PAGE
Political Science and Sociology	73
Postgraduate Admissions Office	87
Postgraduate Applications Office (PAC)	87
Postgraduate fees	86
Power Electronics Research Centre (PERC)	45
Prostate Cancer Institute	27, 31
Psychiatry	73
Psychology	73
Psychology and Health	73
R Radiology	73
Regenerative Medicine Institute (REMEDI)	9, 29, 31
Regenerative Neurobiology	28
Regenerative, Modular & Developmental Engineering Laboratory (REMODEL)	25, 31
Research, our innovative	6
Research themes	22
Research Institutes & Centres–Applied Social Sciences and Public Policy	53
Research Institutes & Centres–Biomedical Science and Engineering	31
Research Institutes & Centres–Environment, Marine & Energy	45
Research Institutes & Centres–Humanities in Context	55–61
Research Institutes & Centres–Informatics, Physical, and Computational Sciences	37
Research programme provision and supports	62
Ryan Institute [Science]	73
Ryan Institute, The	40, 45
S Scholarships	78–79
Social Sciences Research Centre (SSRC)	53
Socio-Economic Marine Research Unit (SEMRU)	45
Social Psychological Science and Cognitive Science	73
Sociology & Politics	73
Spanish	74
Spanish Studies	74
Speech and Language Therapy	74
Specialist Nursing	74
Statistics	74
Stokes Applied Maths Research Cluster	35
Student Services	87
Student Information Desk (SID)	87
Studio Art	74
Supervisor, finding	76
Supportive research environment	20
Surgery	74
T Technology Transfer Office	87
Texts, Contexts, Cultures	74
U UNESCO Child and Family Research Centre (CRFC)	49, 53
Useful links	87
W Whitaker Institute	49, 53
Why research at NUI Galway?	2
Women's Studies	74
Women's Studies Centre	53
Z Zoology	74



Meet us

Open Days...

Tuesday 8 November 2016
Tuesday 7 February 2017

Open Days are a great opportunity to visit the University, speak with academic staff and postgraduate students, get information and advice on our wide range of courses, and even take a campus tour. You can find out about admissions processes, student support resources and funding, or attend a careers seminar or funding presentation.

www.nuigalway.ie/postgraduate-open-day

... and more!

We also exhibit at postgraduate events in Ireland, Northern Ireland, and England. To see where you can meet us in 2015–16, visit:

www.nuigalway.ie/postgradevents

Or you can meet us “virtually”! We regularly host online postgraduate Q&A events where you can ask a programme director your questions in real time. Register for event-reminders at

www.nuigalway.ie/askalecturer

Next Postgraduate
Open Day

TUESDAY
8 November
2016

Next Postgraduate
Open Day

TUESDAY
7 February
2017



NUI Galway graduate Treasa McGrath on High Street, in the city centre. The University, city and county came together to back the Galway 2020 bid, and the campus and Galway streets are decorated with flags and bunting, as here.

Meet us!



NUI Galway
OÉ Gaillimh

POSTGRADUATE OPEN DAYS

National University of Ireland Galway
Ollscoil na hÉireann Gaillimh
University Road, Galway, Ireland

Tuesday
8 November 2016

T: +353 91 524 411
E: postgrad@nuigalway.ie
www.nuigalway.ie/gettheedge
#GetTheEdge

Tuesday
7 February 2017

