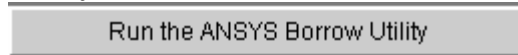


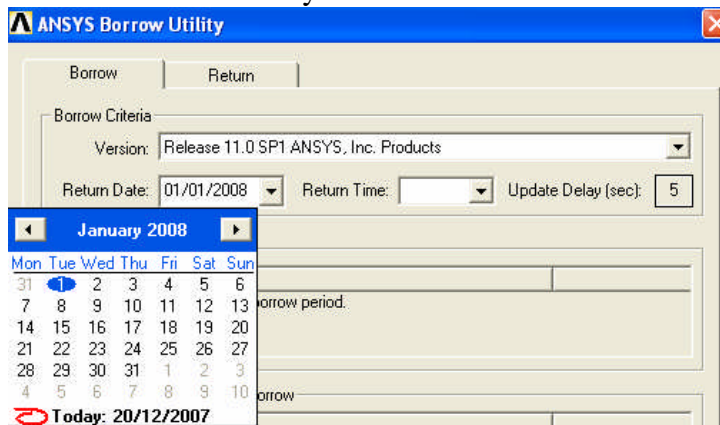
ANSYS

Running the License Borrowing Utility

1. Launch the license borrowing Utility: **Start>Programs>ANSYS FLEXlm License Manager> ANSLIC_ADMIN**. Select **Run the ANSYS Borrow Utility**.

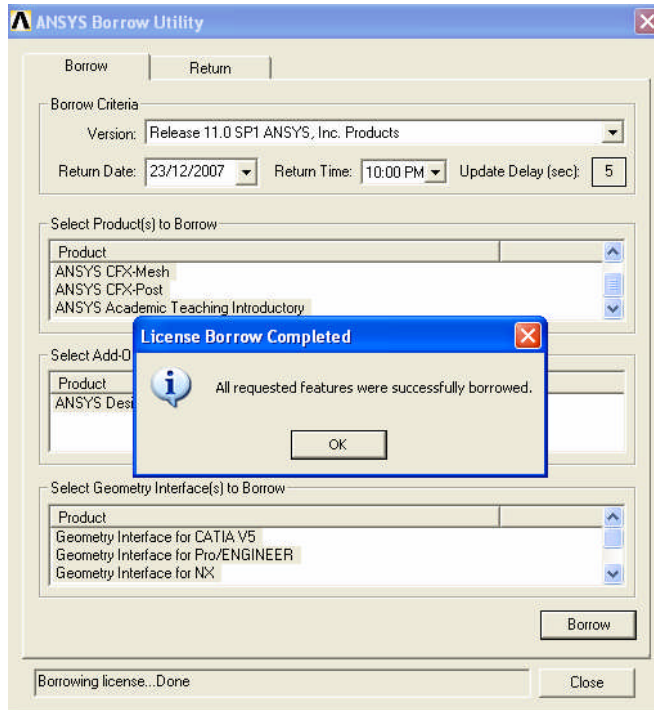


2. Specify the version number and return date. The return date and time defaults to the end of the third day from the current date. You can borrow the license for a maximum of 6 days



3. Select the product(s) you want to borrow, including any add-on features or geometry interfaces. If you do not see a product listed that you think should be available, verify that you have selected the correct version.

4. Click **Borrow**



5. Disconnect from the network.

Note that even when you've disconnected from the network, you must still run the products from the same account you used to borrow the licenses. For example, if you use a network account to borrow the licenses, you cannot then run from the local account.

6. Be sure to verify that you can run the correct product with the borrowed licenses from your machine **AFTER** you've disconnected from the network. If you encounter any difficulties, reconnect to the network, return the license, and then re-borrow the correct license.
7. If you keep a license for the full amount of time, there is no need to check the license back in. Your borrowed license will simply expire at the end of the borrow period, and the license will be released into the pool of available licenses.

Return a License early

1. Reconnect to the same license server from which you borrowed the license(s)
2. Launch the license borrowing utility: **Start>Programs>ANSYS FLEXlm License Manager> ANSLIC_ADMIN**. Select **Run the ANSYS Borrow Utility**
3. Select the **Return** tab. Indicate which license(s) you are returning and click Return.

4. Disconnect from the network.
5. The license(s) you borrowed will be returned to the pool of available licenses.

Note: You must return borrowed licenses from the same account you used to borrow the licenses originally

Some multi-feature products include other products and/or add-on features. The utility will automatically check out any such included products or add-on features. If you borrow one of these multi-feature products and then click on the **Return** tab, you will see the product you selected, as well as any other products and add-ons that it includes. If you return a multi-feature product early, these products and add-on features will also be returned.