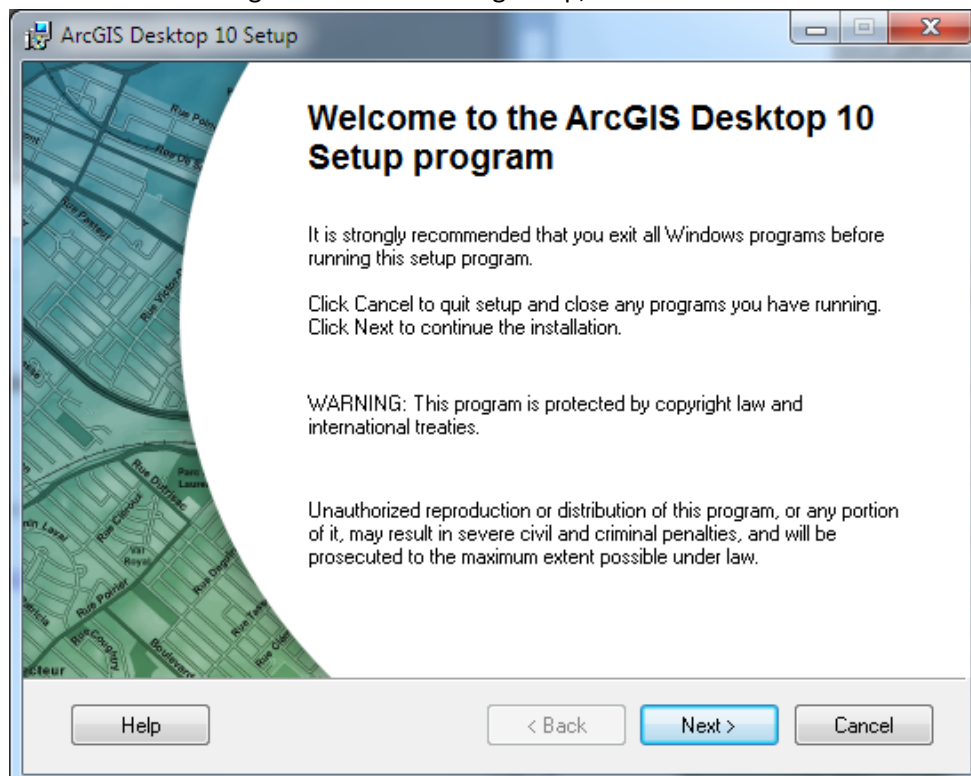


# Installation Instructions for ArcGIS 10

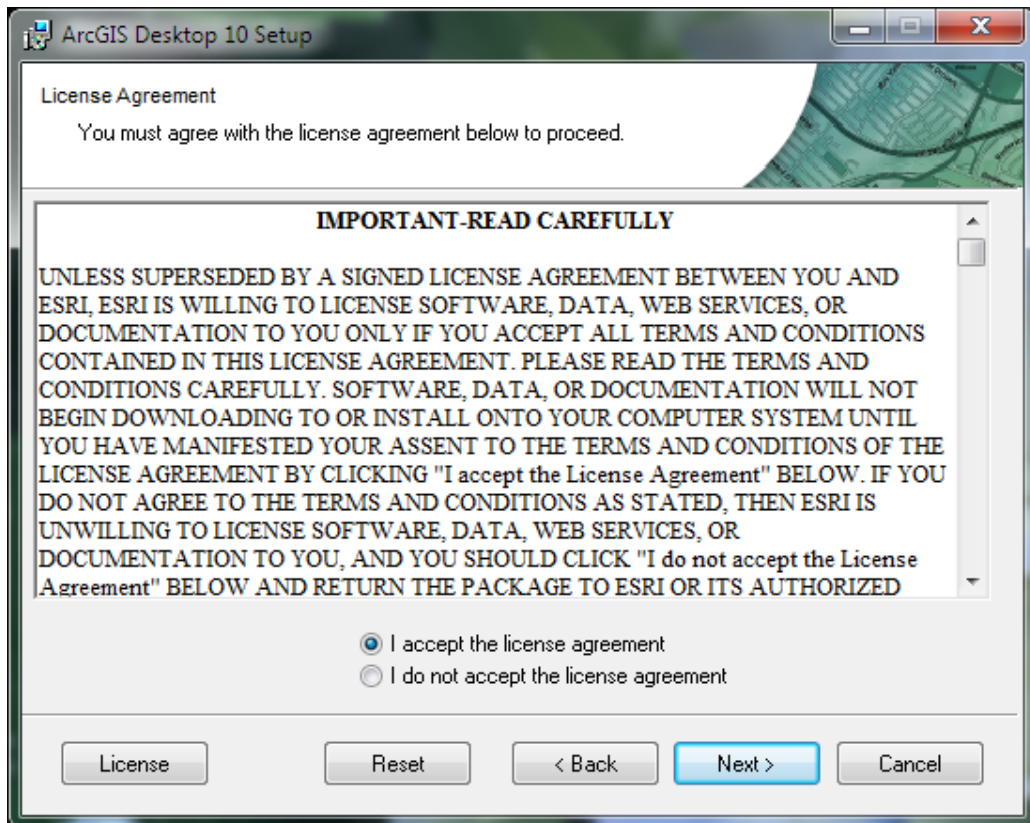
1. Load installation CD and click on **ArcGIS Desktop – Setup**



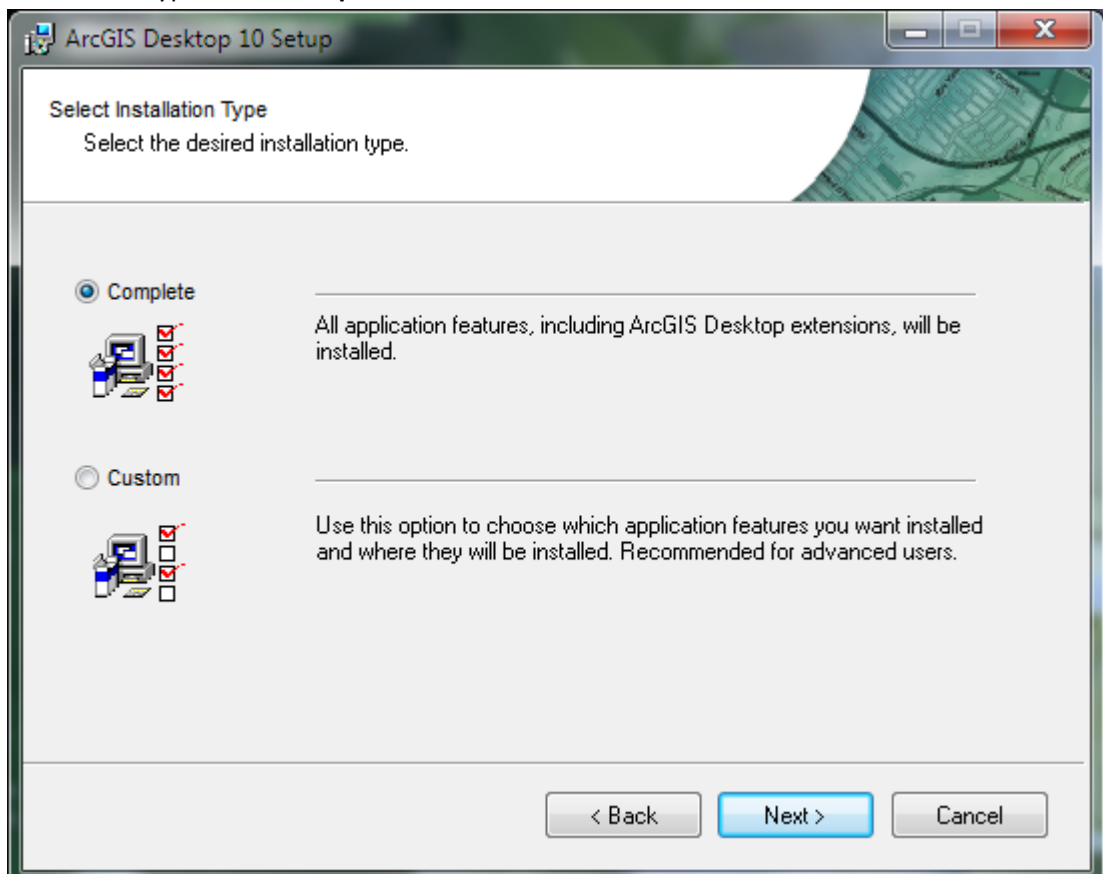
2. Exit all Windows Programs before running setup, click **Next**.



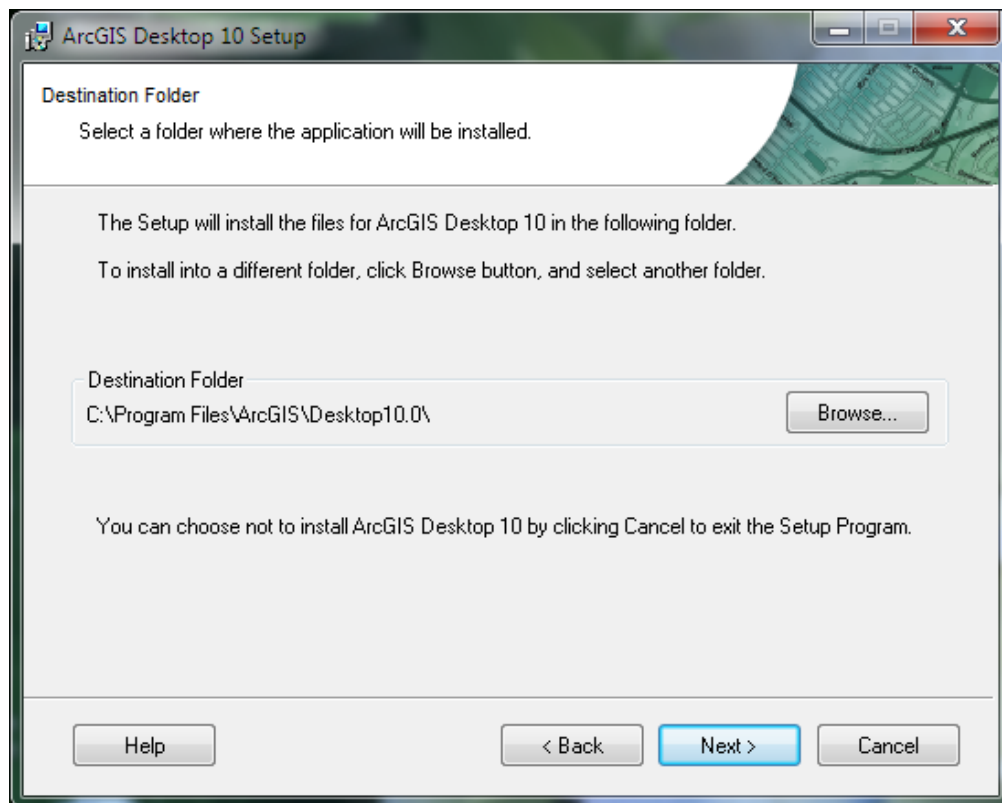
3. Select **I accept the license agreement** and click **Next**



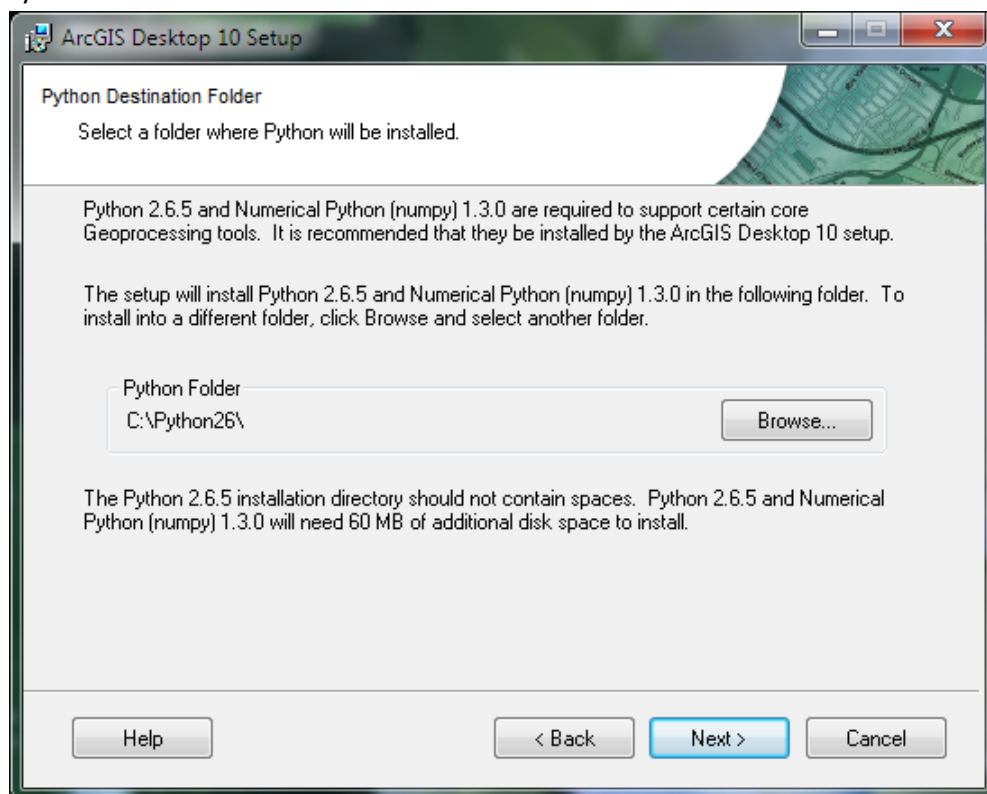
4. Installation Type select **Complete** and click **Next**



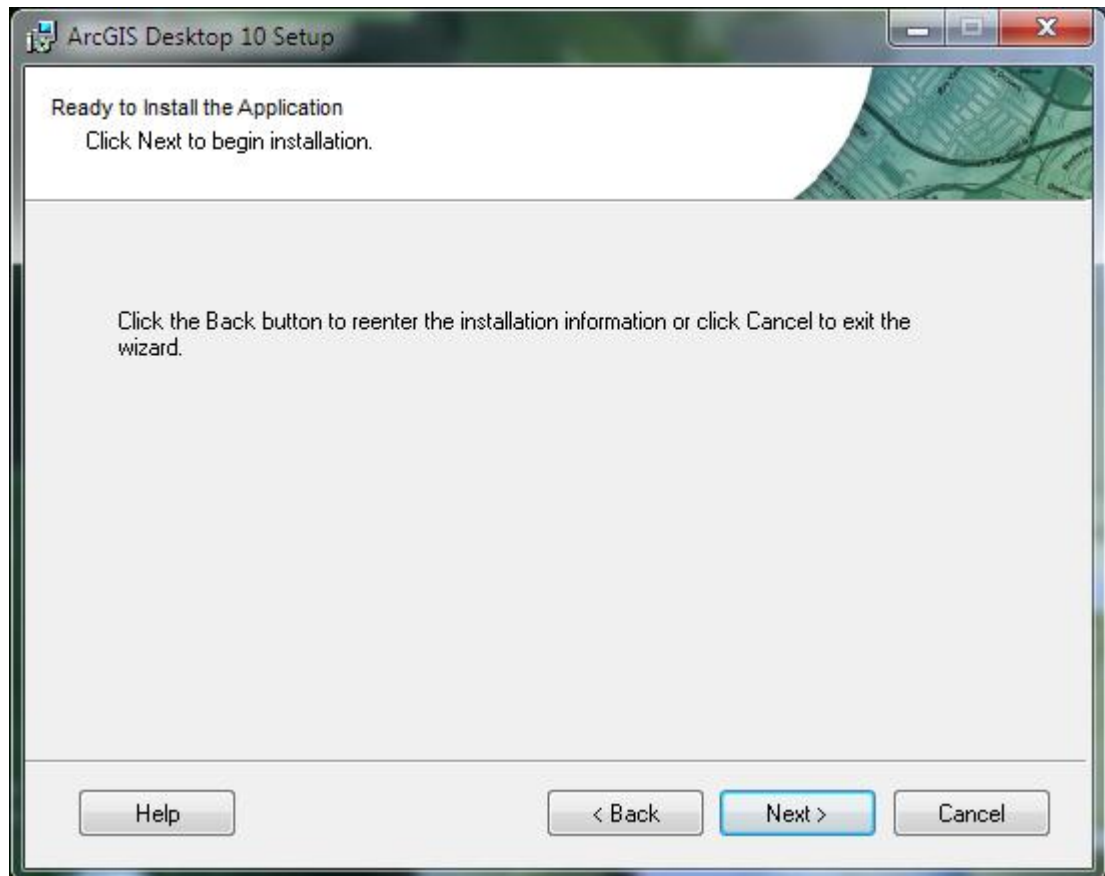
5. Destination Folder click **Next**



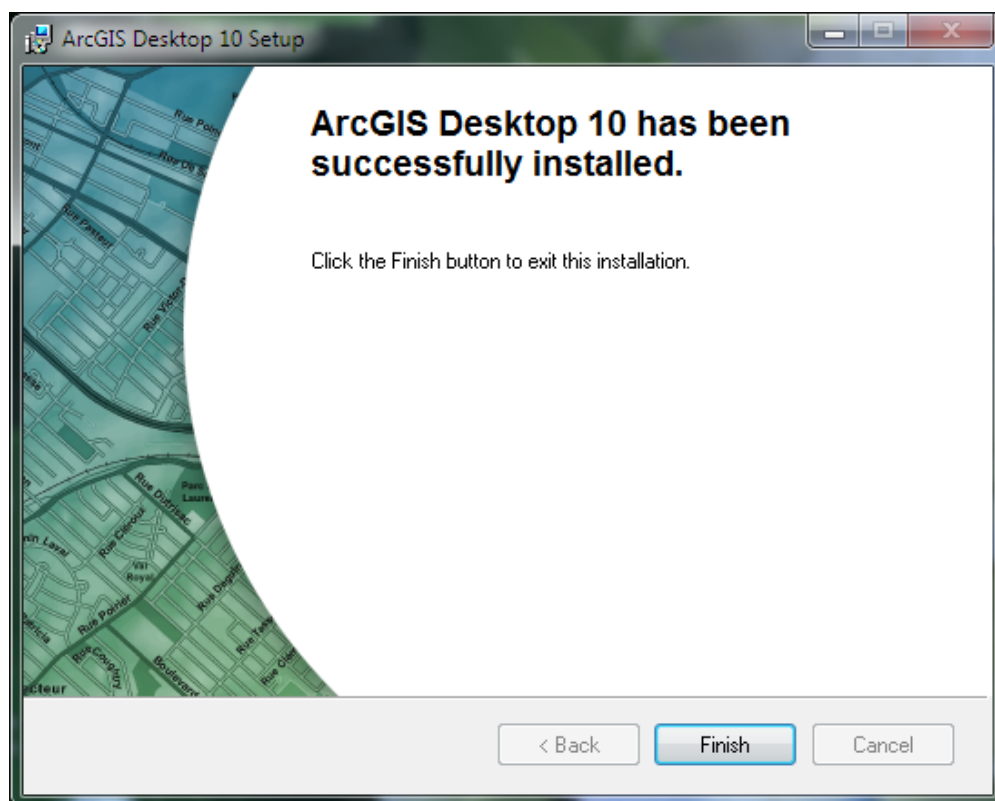
6. Python Destination Folder click **Next**



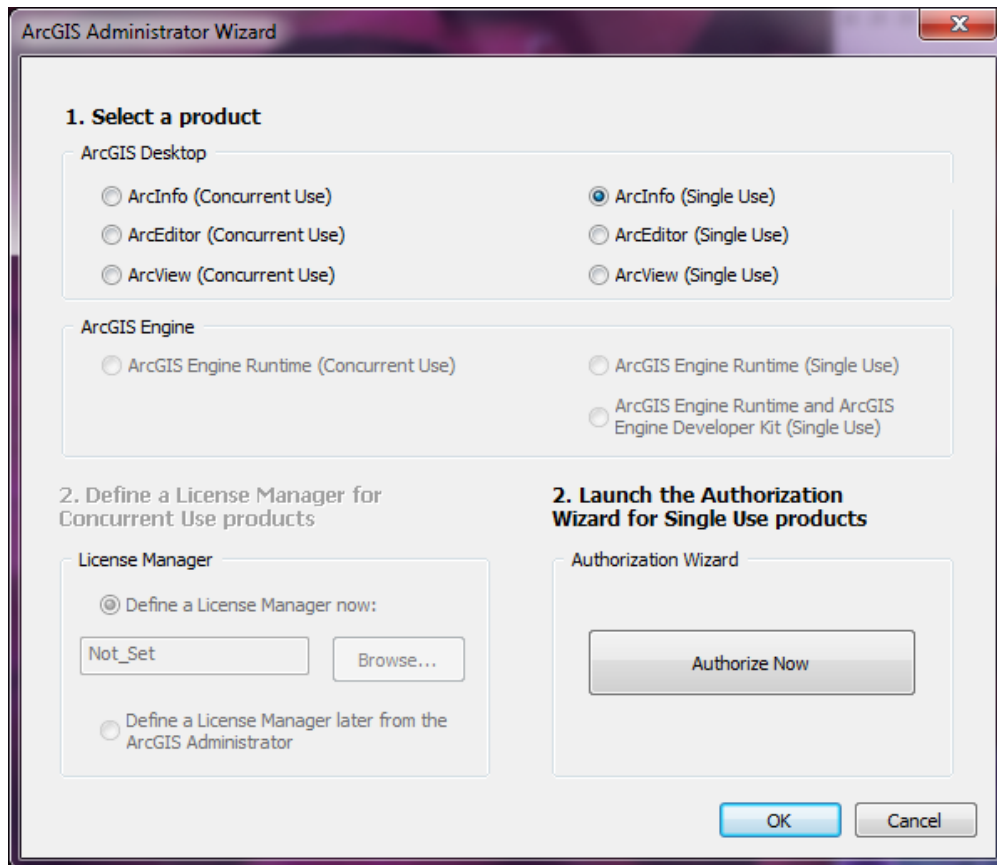
7. Ready to Install the Application, click **Next**



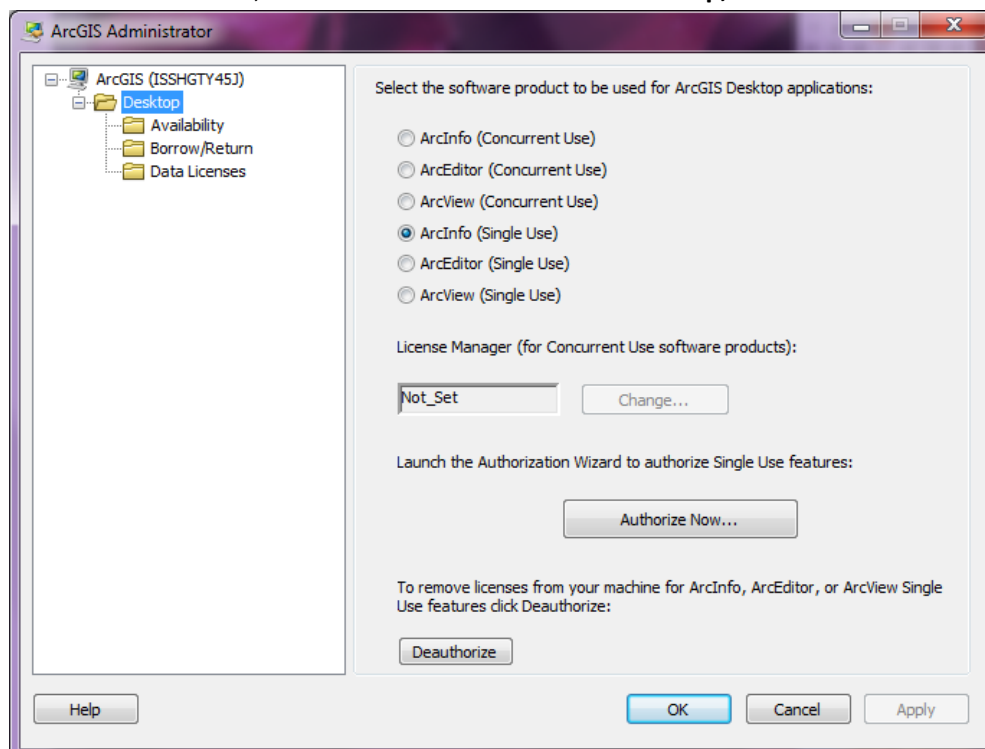
8. To finish the installation click **Finish**



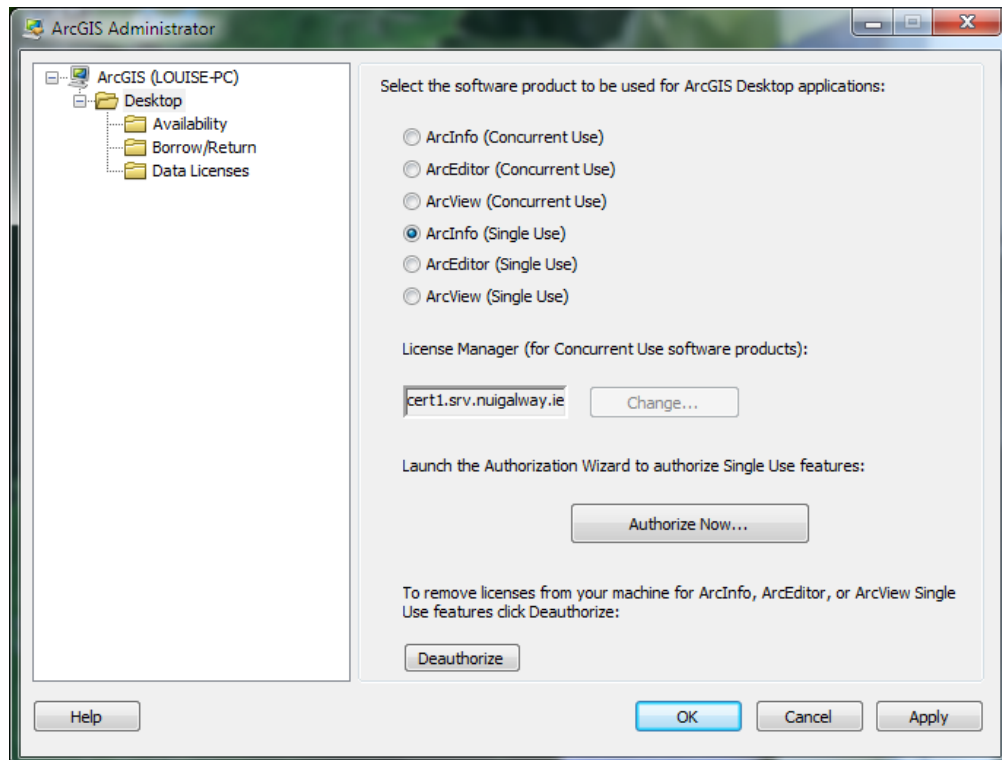
9. ArcGIS Administrator Wizard select ArcInfo (Single Use) and click OK



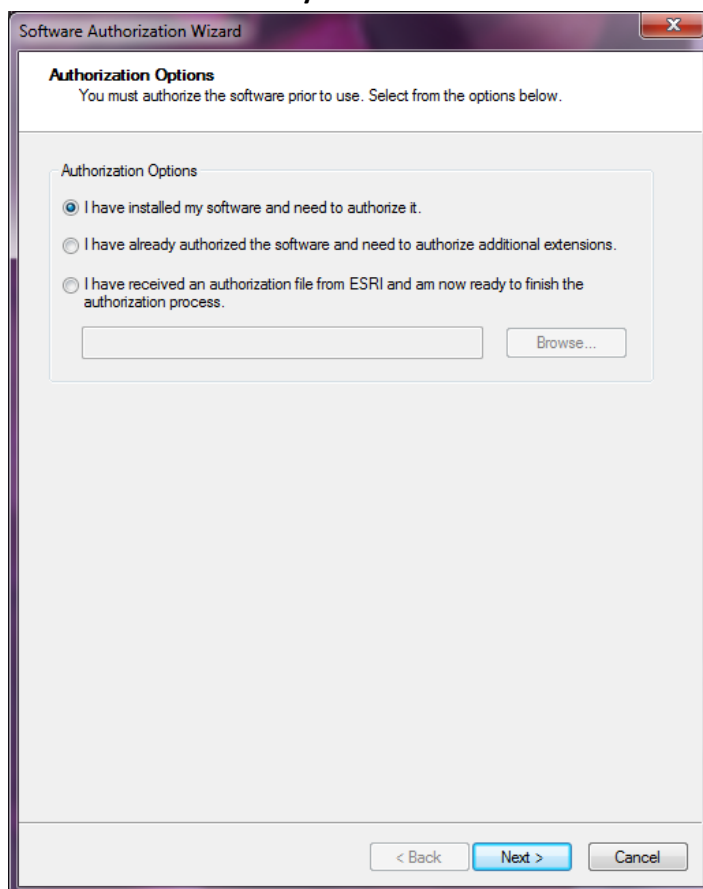
10. ArcGIS Administrator, on the left of the screen click **Desktop**, click **Authorize Now**



11. On the right of the screen select **ArcInfo(Single Use)** and click **Authorize Now**

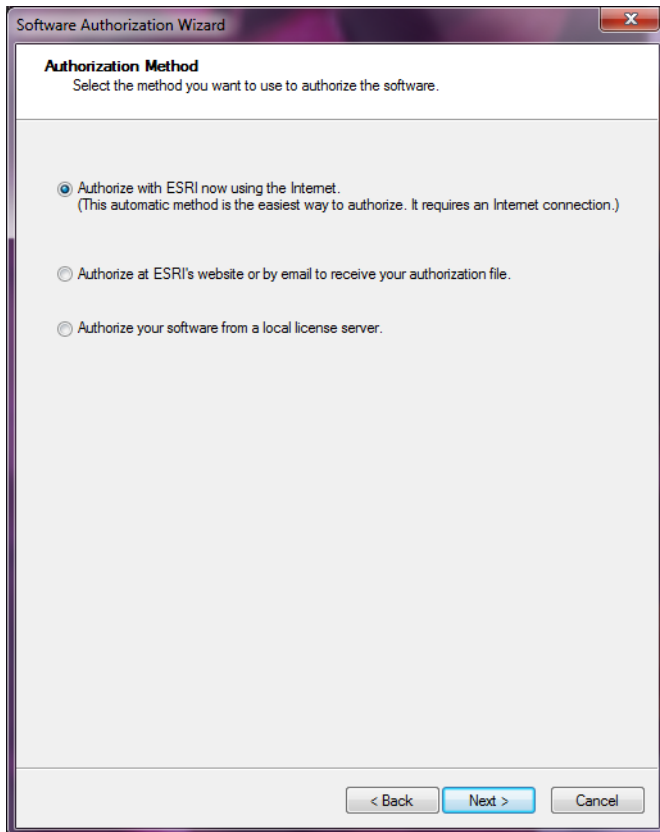


12. Select **I have installed my software and need to authorize it**, click **Next**



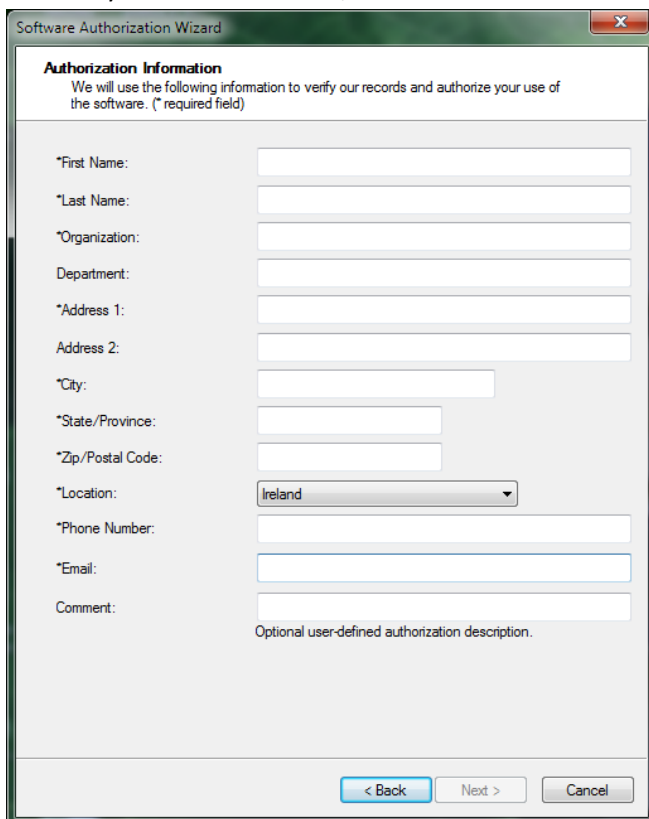
13. Select **Authorize with ESRI now using the Internet.**

(This automatic method is the easiest way to authorize. It requires an Internet connection.) Click **Next**



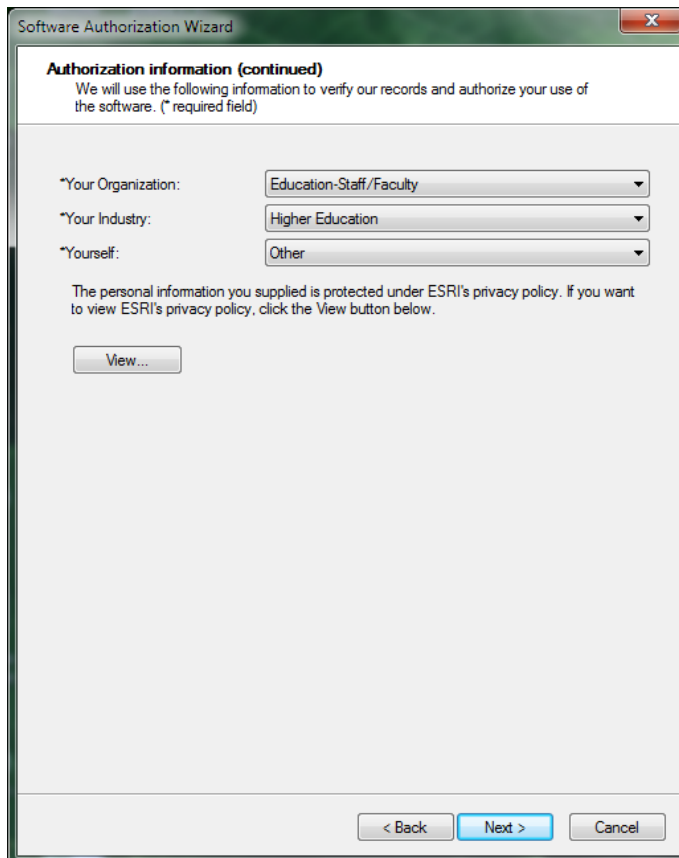
The screenshot shows the 'Software Authorization Wizard' window. The title bar says 'Software Authorization Wizard'. The main heading is 'Authorization Method' with the instruction 'Select the method you want to use to authorize the software.' There are three radio button options: 1. 'Authorize with ESRI now using the Internet.' (selected) with a sub-note '(This automatic method is the easiest way to authorize. It requires an Internet connection.)' 2. 'Authorize at ESRI's website or by email to receive your authorization file.' 3. 'Authorize your software from a local license server.' At the bottom are three buttons: '< Back', 'Next >', and 'Cancel'.

14. Enter in your contact details, click Next



The screenshot shows the 'Software Authorization Wizard' window at the 'Authorization Information' step. The title bar says 'Software Authorization Wizard'. The heading is 'Authorization Information' with the instruction 'We will use the following information to verify our records and authorize your use of the software. (\* required field)'. The form contains the following fields: \*First Name, \*Last Name, \*Organization, Department, \*Address 1, Address 2, \*City, \*State/Province, \*Zip/Postal Code, \*Location (a dropdown menu currently showing 'Ireland'), \*Phone Number, \*Email, and Comment (with a sub-note 'Optional user-defined authorization description.'). At the bottom are three buttons: '< Back', 'Next >', and 'Cancel'.

15. Select your **Organization**, **Industry** and **Yourself** details and click **Next**



Software Authorization Wizard

**Authorization information (continued)**  
We will use the following information to verify our records and authorize your use of the software. (\* required field)

\*Your Organization: Education-Staff/Faculty

\*Your Industry: Higher Education

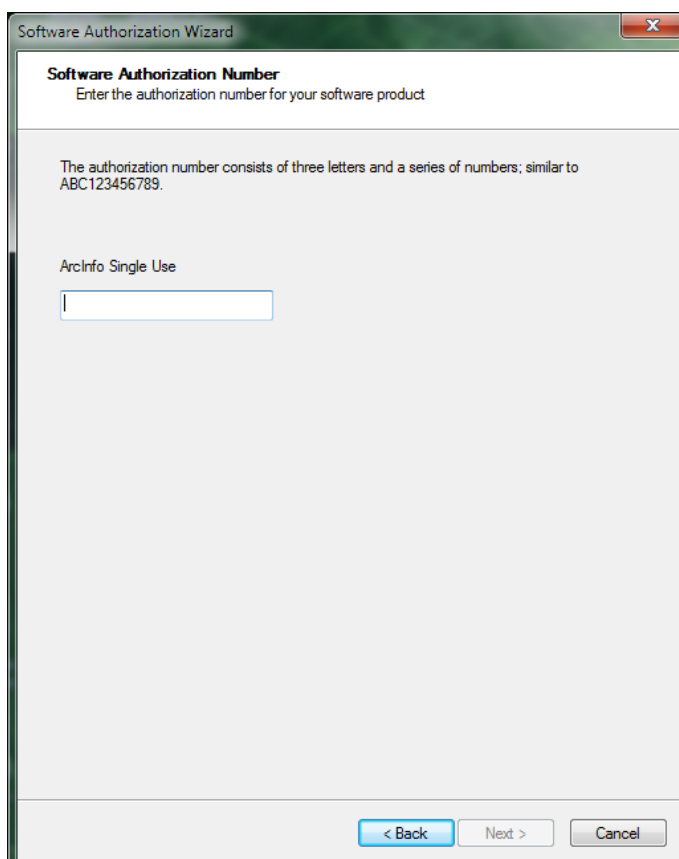
\*Yourself: Other

The personal information you supplied is protected under ESRI's privacy policy. If you want to view ESRI's privacy policy, click the View button below.

View...

< Back Next > Cancel

16. Enter the licence code found on the CD cover and click **Next**



Software Authorization Wizard

**Software Authorization Number**  
Enter the authorization number for your software product

The authorization number consists of three letters and a series of numbers; similar to ABC123456789.

ArcInfo Single Use

< Back Next > Cancel



17. Select I have authorization number(s) to authorize one or more extensions  
Enter in each authorization number as required and click **Next**

The dialog box is titled "Software Authorization Wizard" and "Authorize Software Extensions". It asks the user to select an option below. Under "Options", the second radio button is selected: "I have authorization number(s) to authorize one or more extensions." Below this, under "Extensions", there is a list of extensions with corresponding "Authorization Number:" input fields. The extensions listed are: 3D Analyst, Spatial Analyst, Network Analyst, Publisher, ArcScan, Data Interoperability, Geostatistical Analyst, Tracking Analyst, Schematics, and Maplex. At the bottom right of the extensions list is a button labeled "Other Extensions". At the bottom of the dialog are three buttons: "< Back", "Next >", and "Cancel".

Extensions	Authorization Number:
3D Analyst	
Spatial Analyst	
Network Analyst	
Publisher	
ArcScan	
Data Interoperability	
Geostatistical Analyst	
Tracking Analyst	
Schematics	
Maplex	

18. If you did not enter authorization code for any of the extensions you can try an evaluation copy, if not just click **Next**

The dialog box is titled "Software Authorization" and "Evaluate Software Extensions". It contains a message: "You have not provided authorization information for one or more of the ArcGIS Desktop extensions. If you would like to try an evaluation copy of one or more of the extensions listed below, select the desired extension and add it to the evaluation list." Below this message are two list boxes: "Available Extensions" and "Evaluation Extensions". The "Available Extensions" list contains: 3D Analyst, ArcScan, Business Analyst, Business Analyst Premium, Data Interoperability, Geostatistical Analyst, Maplex, Network Analyst, Publisher, Schematics, Spatial Analyst, and Tracking Analyst. Between the two list boxes are two buttons: "-->" and "<--". At the bottom of the dialog are three buttons: "< Back", "Next >", and "Cancel".

Note: If you have previously authorized any of these extensions, ESRI cannot provide you additional evaluations.

19. To complete authorization click **Finish**

