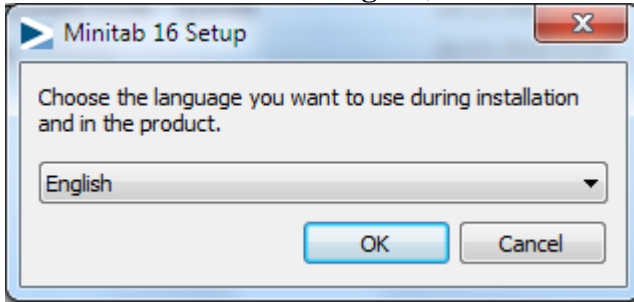


Installation Instructions for MINITAB 16

Important: To install software on your machine you must login as an administrator

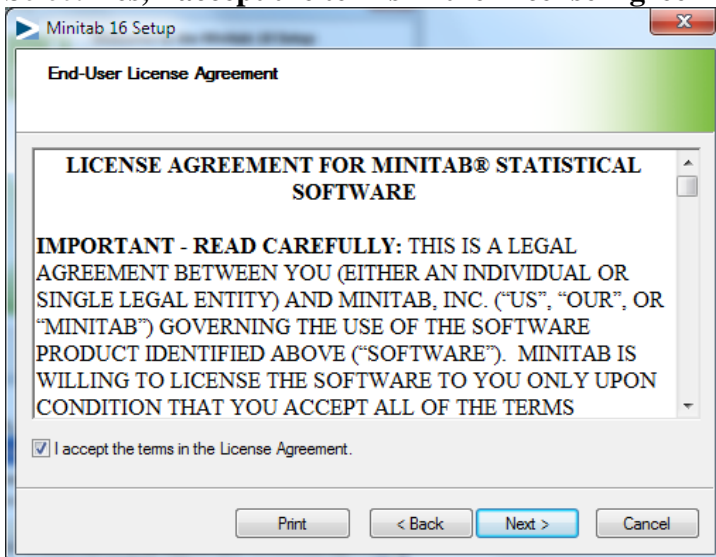
1. At the first screen select **English**, click **OK**



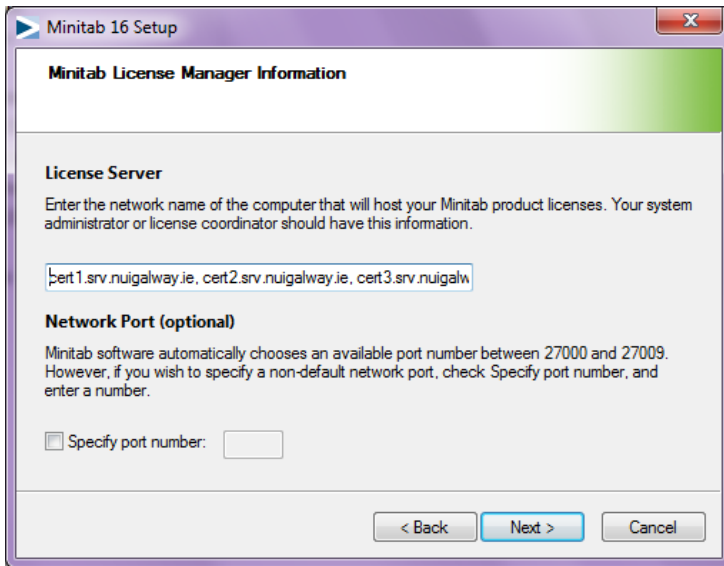
2. At the Welcome screen, click **Next**



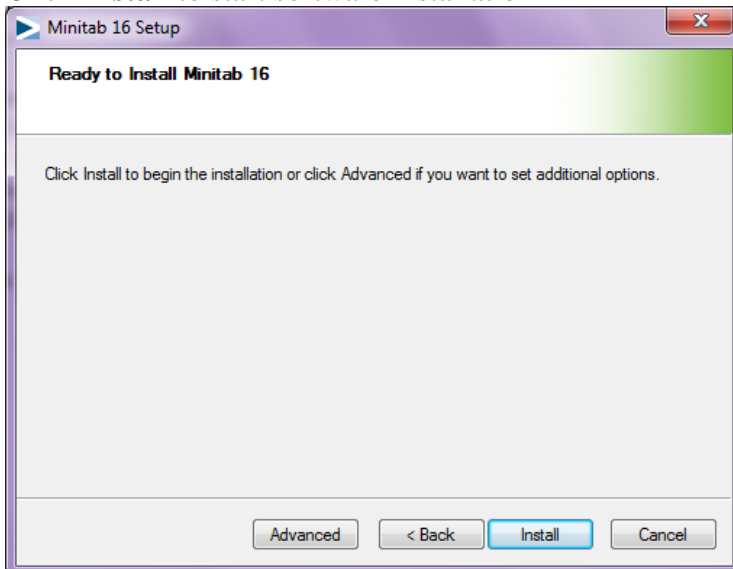
3. Select **Yes, I accept the terms in the License Agreement**, click **Next**



4. **Minitab License Manager Information**, under **License Server** enter 27000@cert1.srv.nuigalway.ie; 27000@cert2.srv.nuigalway.ie; 27000@cert3.srv.nuigalway.ie
Click **Next**



5. Click **Install** to start software installation



6. Click **Finish** to exit the setup

