

ModelSim - Connect to the Licence Server

1. Click on Start > All Programs > ModelSim SE 6.0a > Licensing Wizard

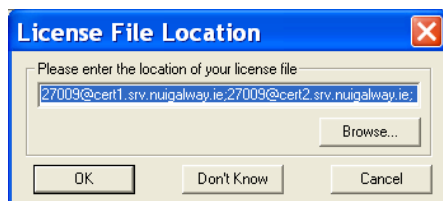


2. At the License Wizard click **Continue**

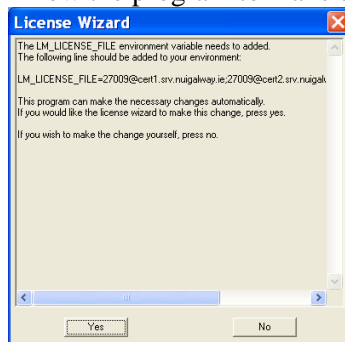


3. Enter the License File Location and click **OK**

27009@cert1.srv.nuigalway.ie;27009@cert2.srv.nuigalway.ie;27009@cert3.srv.nuigalway.ie



4. Allow the program to make the necessary changes automatically by click **Yes**



5. The License File has been successfully updated click **OK**

