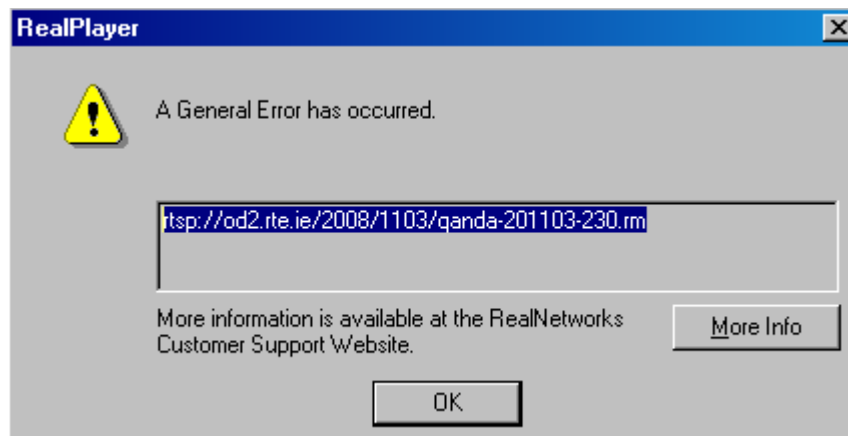


## Workaround to open Real Media file streams (.rm) from the internet using Media Player Classic

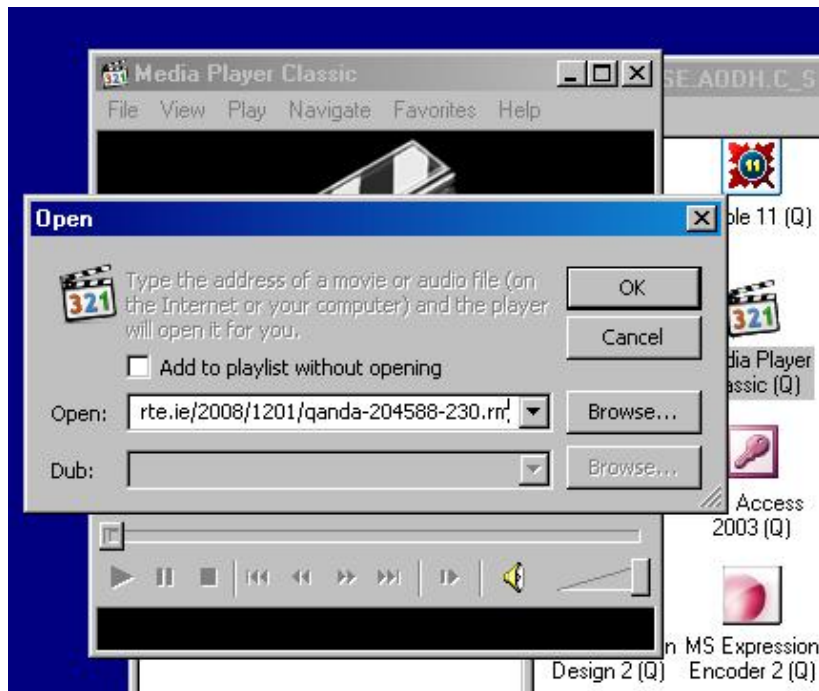
1. Open Media Player Classic by clicking on the icon in the Nal window.



2. Go to the website and click on the link to the required stream.
3. This will fail giving an error message like the one shown below.



4. Copy the URL address from the error message - by highlighting, then right clicking and selecting copy.
5. From within Media Player Classic
  - Go to File – Open File
  - Paste the URL into the slot beside Open:
  - Select OK



This will then use media Player to access the required stream.

Note:

To access RTE archive material, save the .smil file to your U:drive and then browse to the file from Media Player Classic.