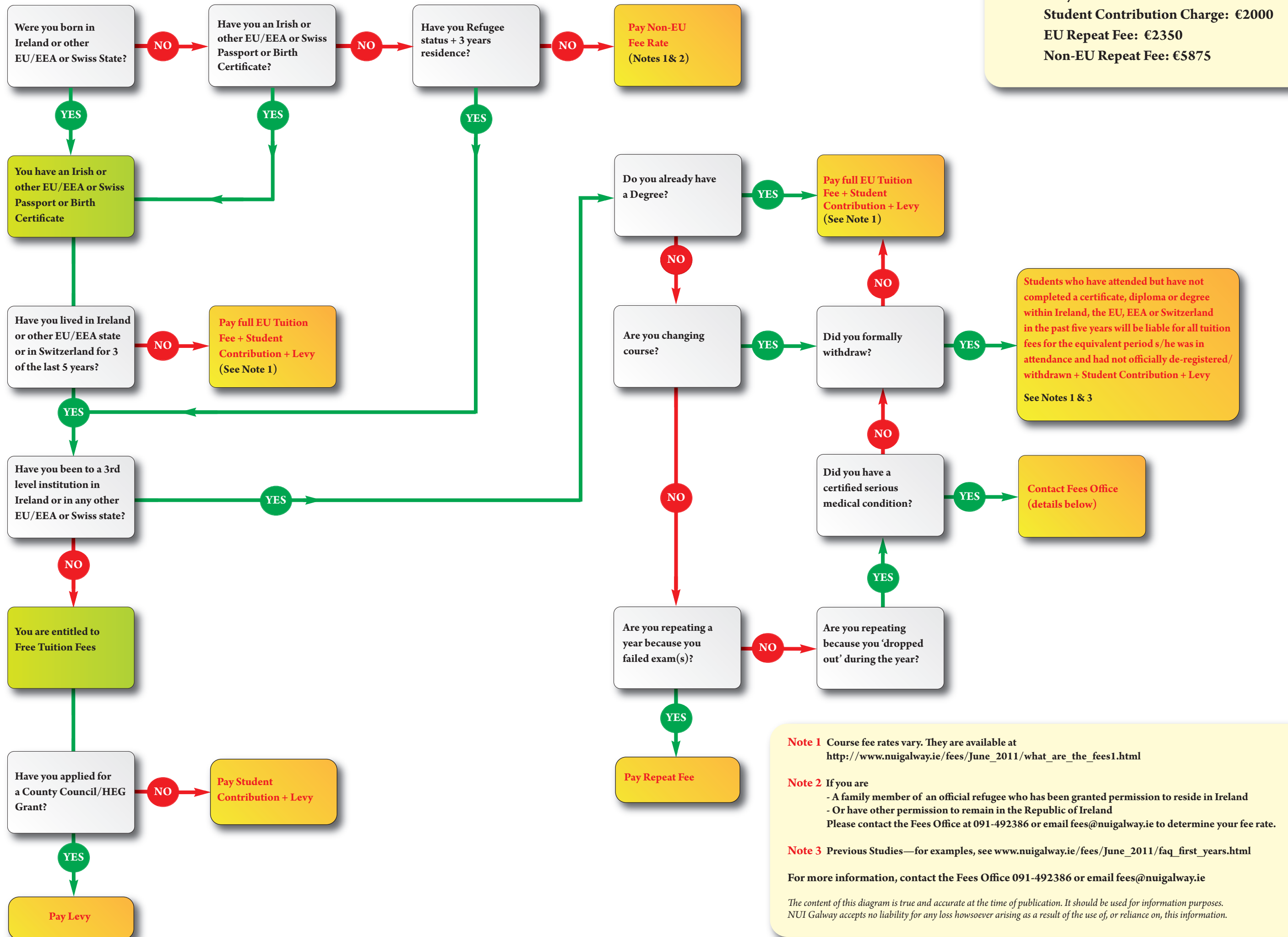


Fees – How much do I owe?



2011/12:
 Levy: €224
 Student Contribution Charge: €2000
 EU Repeat Fee: €2350
 Non-EU Repeat Fee: €5875

Students who have attended but have not completed a certificate, diploma or degree within Ireland, the EU, EEA or Switzerland in the past five years will be liable for all tuition fees for the equivalent period s/he was in attendance and had not officially de-registered/withdrawn + Student Contribution + Levy
 See Notes 1 & 3

Contact Fees Office (details below)

Note 1 Course fee rates vary. They are available at http://www.nuigalway.ie/fees/June_2011/what_are_the_fees1.html

Note 2 If you are
 - A family member of an official refugee who has been granted permission to reside in Ireland
 - Or have other permission to remain in the Republic of Ireland
 Please contact the Fees Office at 091-492386 or email fees@nuigalway.ie to determine your fee rate.

Note 3 Previous Studies—for examples, see www.nuigalway.ie/fees/June_2011/faq_first_years.html

For more information, contact the Fees Office 091-492386 or email fees@nuigalway.ie

The content of this diagram is true and accurate at the time of publication. It should be used for information purposes. NUI Galway accepts no liability for any loss howsoever arising as a result of the use of, or reliance on, this information.