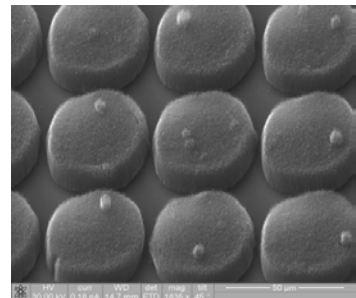
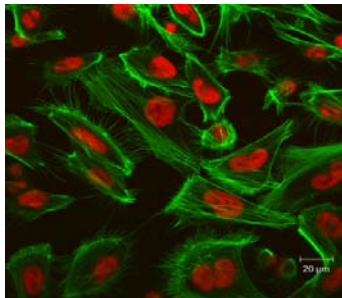
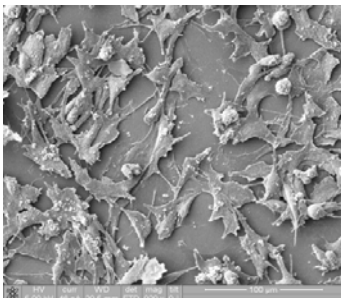


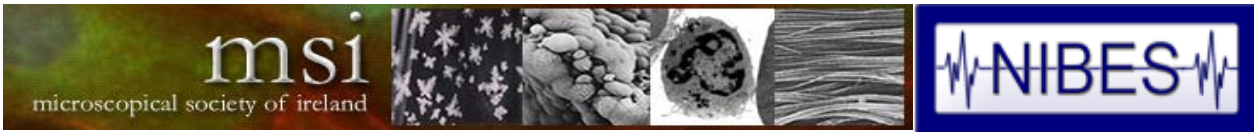
The Microscopical Society of Ireland and the Northern Ireland Biomedical Engineering Society Joint Annual Symposium

25th - 27th August 2010



Venue: The Assembly Hall, University of Ulster, Jordanstown
Campus





USEFUL TRAVEL INFORMATION FOR DELEGATES

**The Microscopical Society of Ireland and the Northern Ireland Biomedical Engineering Society Joint Annual Symposium
25th – 27th August 2010**

Venue: University of Ulster, Jordanstown Campus

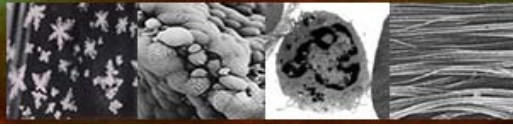
Introduction

The following document has been put together to provide useful information for delegates planning to travel to the UK Society for Biomaterials Annual Conference and Postgraduate Day at the Jordanstown campus of the University of Ulster. The information listed in this document includes:

1. University of Ulster (Jordanstown Campus)
2. Airports and Airlines
3. Taxi Companies
4. Accommodation
5. Public Transport
6. Places to eat
7. Conference Chair Contact Details.

1. University of Ulster (Jordanstown Campus)

The Jordanstown campus is situated seven miles north of Belfast. The grounds lie at the foot of the South Antrim hills, and the land fronting the main entrance slopes down to the shore of Belfast Lough. The campus commands impressive views of the Lough, the Belfast Hills and County Down. Historic Carrickfergus, with its 12th century castle, harbour and modern marina is four miles north of the campus. The nearest shops and services to the University is Whiteabbey village which is located 1 mile away (along the main Shore Road (A2)) traveling towards Belfast.

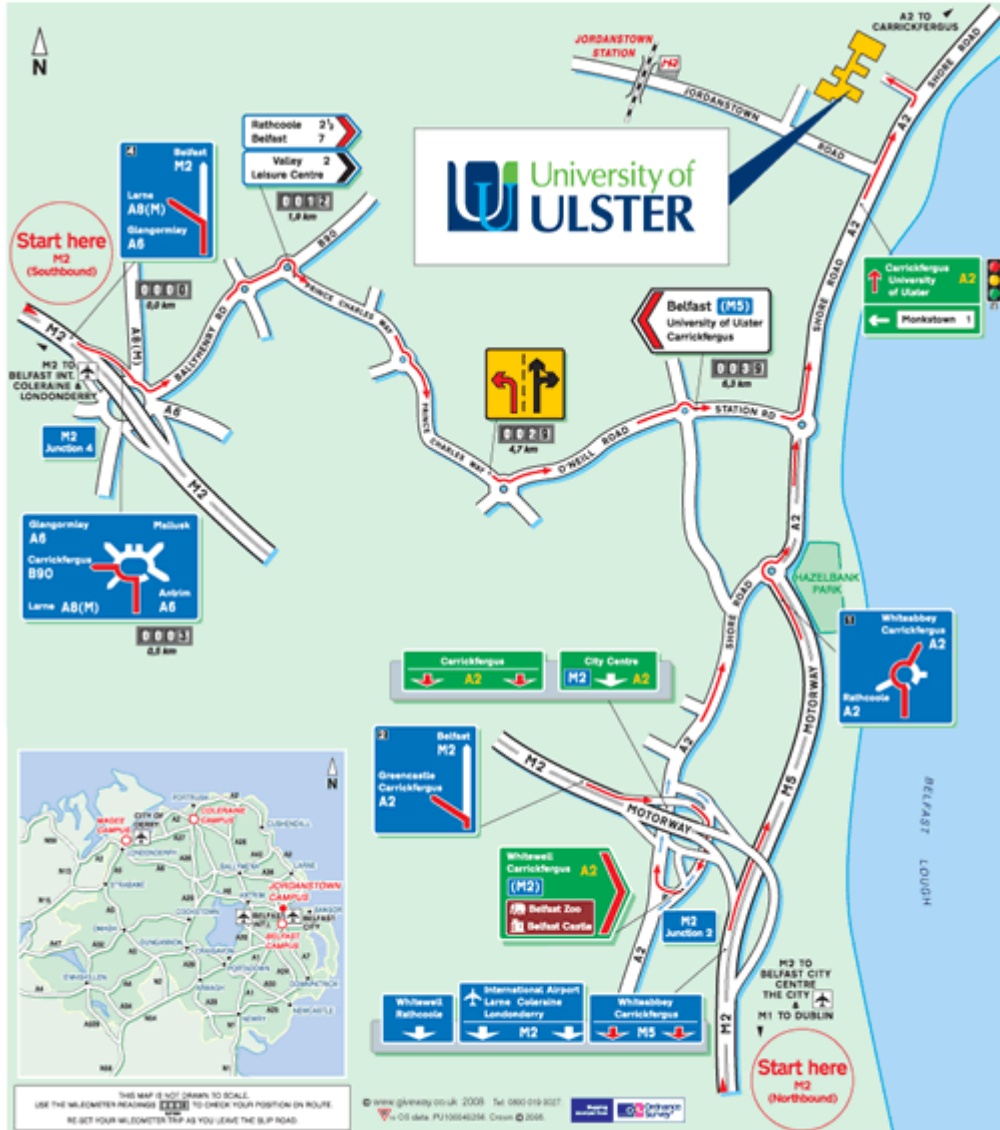


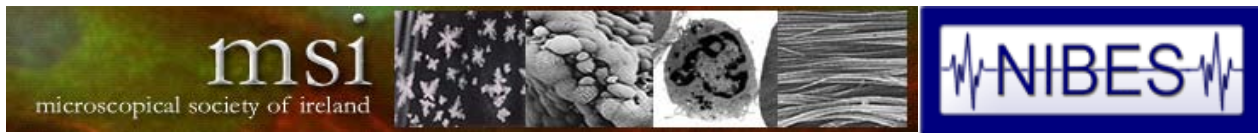
Jordanstown campus,
Shore Road, Newtownabbey, Co. Antrim BT37 0QB
Tel: 08 700 400 700

Public Transport

-  **By Rail, Jordanstown Railway Station**
Sited on the Jordanstown Road, the station is a 10 minute walk away from the Jordanstown campus. Rail timetables are available online: <http://www.railink.co.uk/tn.asp> or by calling 02990 65 66 30
-  **By Bus**
Ulsterbus connections are available through both city centre based Europa and Laganaside Bus Centres. Bus timetables are available online: <http://www.railink.co.uk/ulsterbus.asp> or by calling 02990 66 66 30.
-  **By Air**
Belfast City Airport, <http://www.belfastcityairport.com/home.asp> is 12 miles away from the campus. Taxis are available from the airport.
Belfast International Airport, <http://www.belfastairport.com/en/> is 18 miles away from the campus. Taxis are available from the airport.
City of Derry Airport, <http://www.cityofderryairport.com/> is 68 miles away from the campus.
-  **By Sea**
From Liverpool to Belfast with Norfolk Line, <http://www.norfolkline.com/ferry/travel>
From Stranraer, Scotland to Belfast with Stena Line, <http://www.stenaline.co.uk/ferry/>
From Cairnryan, Scotland to Larne with P&O Irish Sea, <http://www.poirishsea.com/>
From Troon, Scotland to Larne with P&O Irish Sea, <http://www.poirishsea.com/>

Further general information is available from the Northern Ireland Tourist Board, <http://www.nitb.com/northernireland.com/>





Nearest Train Station

The nearest train station to the University is the Jordanstown station, which is 10 minutes walk from the campus (just off the Jordanstown Road). The Jordanstown station is situated on the Larne line of the Northern Ireland Railways network (operated by Translink).

Tel: 028 90 666630 (Open from 7am - 8pm).

Web: <http://www.translink.co.uk/nir.asp>

Nearest Bus Stop

The nearest bus stop is located at the Shore Road entrance to the University. The bus service from Belfast to the University is operated by Ulsterbus (part of Translink) and runs from the Laganside Bus Station and Belfast City Centre.

Service Number: 163 or 166.

Tel: 028 90 666630 (Open from 7am - 8pm).

Web: <http://www.translink.co.uk/atulsterbus.asp>

Travelling By Road

The Jordanstown campus is located just off the Shore Road (A2) which connects Belfast to Carrickfergus. The main University entrance is located just off the Shore Road. A second entrance is located just off the Jordanstown Road.

2. Airports and Airlines

The George Best Belfast City Airport is 12 miles from the campus and Belfast International Airport is 18 miles from the campus. Taxis can be picked up at both airports. Typically a taxi from the George Best Belfast City Airport to Jordanstown would cost £15-20. A Taxi from Belfast International Airport to Jordanstown would typically cost around £20-25. There is also a bus service between the airports and Belfast City Centre (Europa Buscentre) operated by Translink. Service numbers for airport buses:

Belfast International airport (Airport Express 300),
George Best Belfast City Airport (Airport Express 600).

Translink Airport Bus Services: www.translink.co.uk/VisitorAirportFerry

George Best Belfast City Airport: www.belfastcityairport.com/

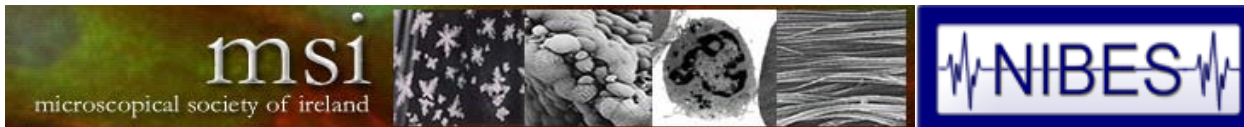
Airlines running from George Best Belfast City Airport:

- Flybe
- BMI
- Ryanair.

Belfast International Airport: www.belfastairport.com/

Airlines running from Belfast International Airport:

- Easyjet
- BMI Baby
- Aer Lingus
- Jet2.



3. Taxi Companies

Jordanstown area:

Abbey Taxis: 028 9058 8588
J and J: 028 9085 2285

Carrickfergus area:

Castle Cabs: 028 9335 0550
Mahoods Taxis: 028 9336 2727

Belfast area:

Value Cabs: 02890 809080
Fon-a-Cab: 028 9033 3333

4. Accommodation

On Campus:

University of Ulster Residential Services (Jordanstown campus)

Tel: 028 903 66236

Web: www.accommodation.ulster.ac.uk/index

Off Campus:

Belfast area:

Visit: www.gotobelfast.com (refer to the Visit Belfast section for accommodation lists).

Selected Belfast Hotels:

Europa Hotel

Tel : 028 9027 1066
Fax : 028 9032 7800
Email : res@eur.hastingshotels.com
Web : www.hastingshotels.com

Holiday Inn

Tel : 0870 400 9005
Fax : 028 9062 6546
Email : belfast@ichotelsgroup.com
Web : www.belfast.holiday-inn.com

Madison's Hotel:

Tel : 028 9050 9800
Fax : 028 9050 9808
Email : info@madisonshotel.com
Web : www.madisonshotel.com

Premier Inn

Tel : 0870 850 6316
Fax : 0870 850 6317
Web : www.premierinn.com

Radisson SAS

Tel : 028 9043 4065
Fax : 028 9043 4066
Email : info.belfast@radissonsas.com
Web : www.radissonsas.com

Ten Square Boutique Hotel

Tel : 028 9024 1001

Fax : 028 9024 3210

Email : reservations@tensquare.co.uk

Web : www.tensquare.co.uk

The Merchant Hotel

Tel : 028 9023 4888

Fax : 028 9024 7775

Email : info@themerchanthotel.com

Web : www.themerchanthotel.com

5. Public Transport

All Public Transport in Northern Ireland is operated by Translink.

Tel: 028 90 666630 (Open from 7am - 8pm).

Web: (www.translink.co.uk).

Translink Services:

Train Services: Northern Ireland Railways

Buses (beyond greater Belfast): Ulsterbus

Buses (greater Belfast area): Metro

6. Places to eat (Close to the University campus)

Whiteabbey Village (1 mile away on the main Shore Road (towards Belfast):

– Bureau Bar Bistro

– Kinara (Indian Restaurant)

7. Conference Chair Details

Dr. George Burke

Biomaterials and Tissue Engineering Research Group

Room 25A19, Nanotechnology and Integrated Bioengineering Centre (NIBEC)

School of Engineering

University of Ulster, Jordanstown Campus

Shore Road, Newtownabbey

Co. Antrim, Northern Ireland. (UK).

BT37 0QB.

Tel: +44 28 90 368924

E-mail: g.burke@ulster.ac.uk

Web: www.nibec.ulster.ac.uk

Dr Nicholas Dunne

School of Mechanical & Aerospace Engineering

Queen's University of Belfast

Ashby Building

Stranmillis Road

Belfast, , BT9 5AH

Northern Ireland

Tel: +44 28 90974122

E-mail: n.dunne@qub.ac.uk

Web: <http://www.qub.ac.uk/schools/SchoolofMechanicalandAerospaceEngineering/>