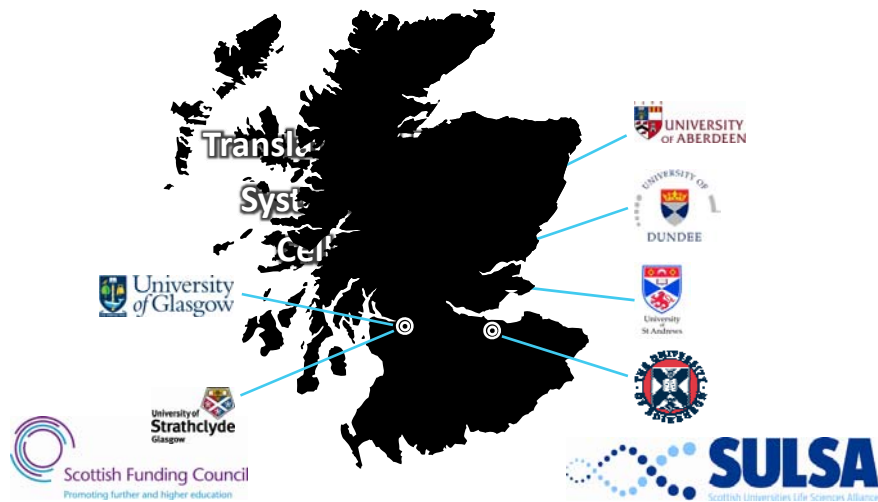




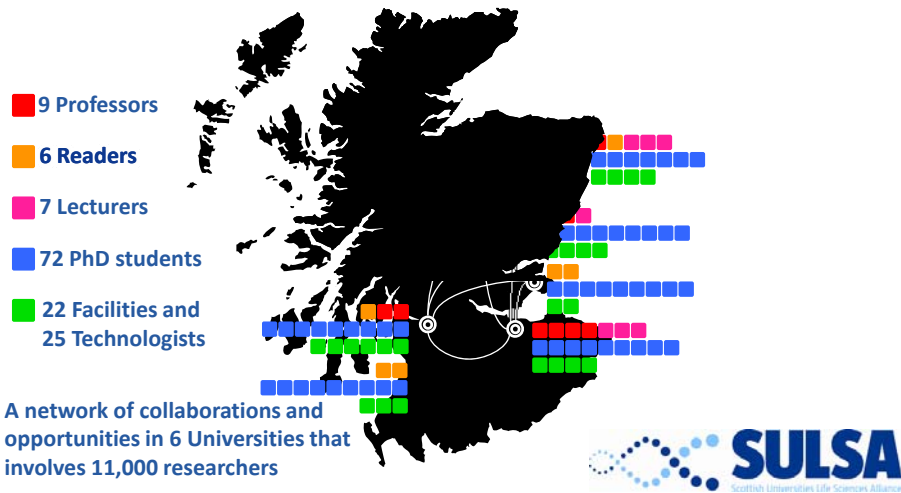
Presentation of SULSA Scottish Research Pooling

Dr Denise Barrault
SULSA Executive Director

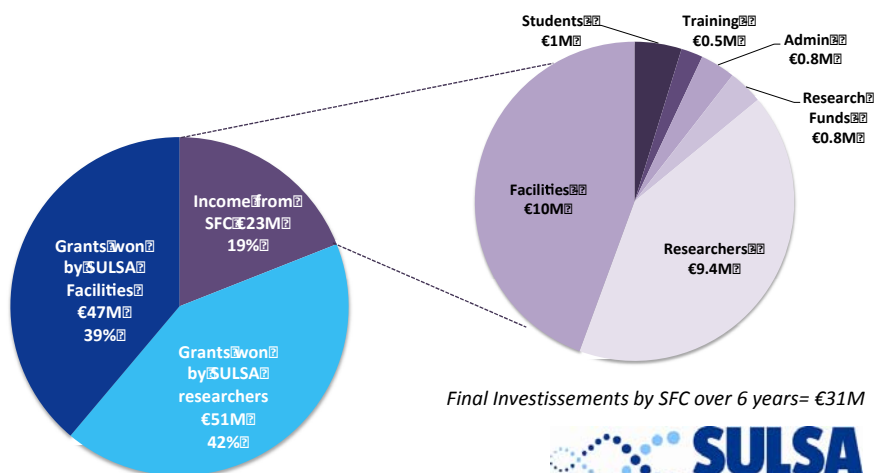
What is SULSA?



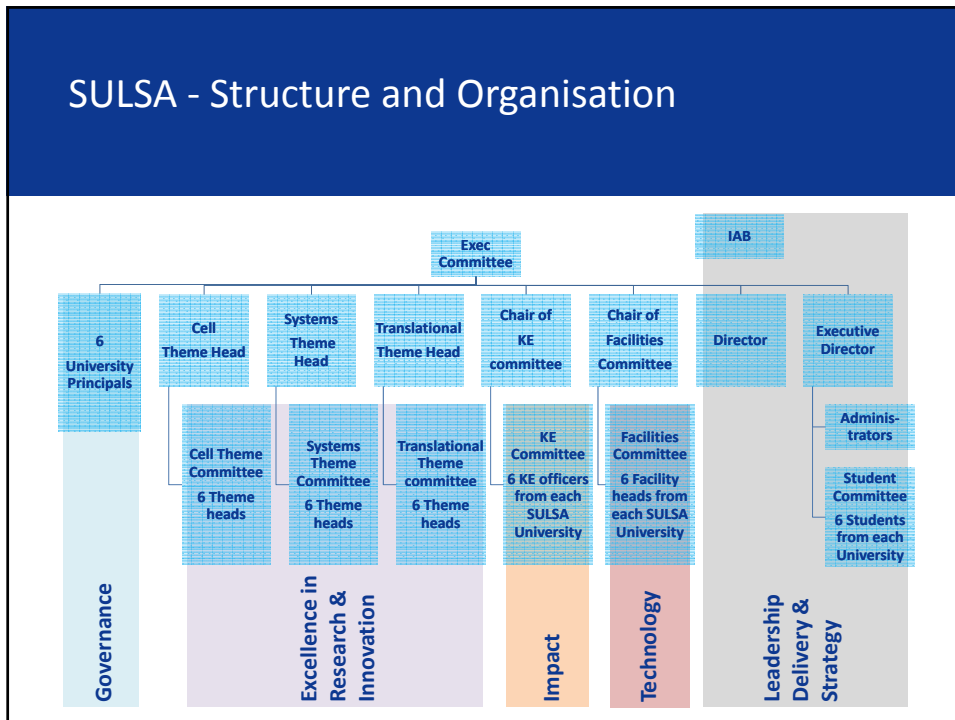
SULSA's aim: "Advance Scotland's Excellence in Life Sciences Research and Innovation"



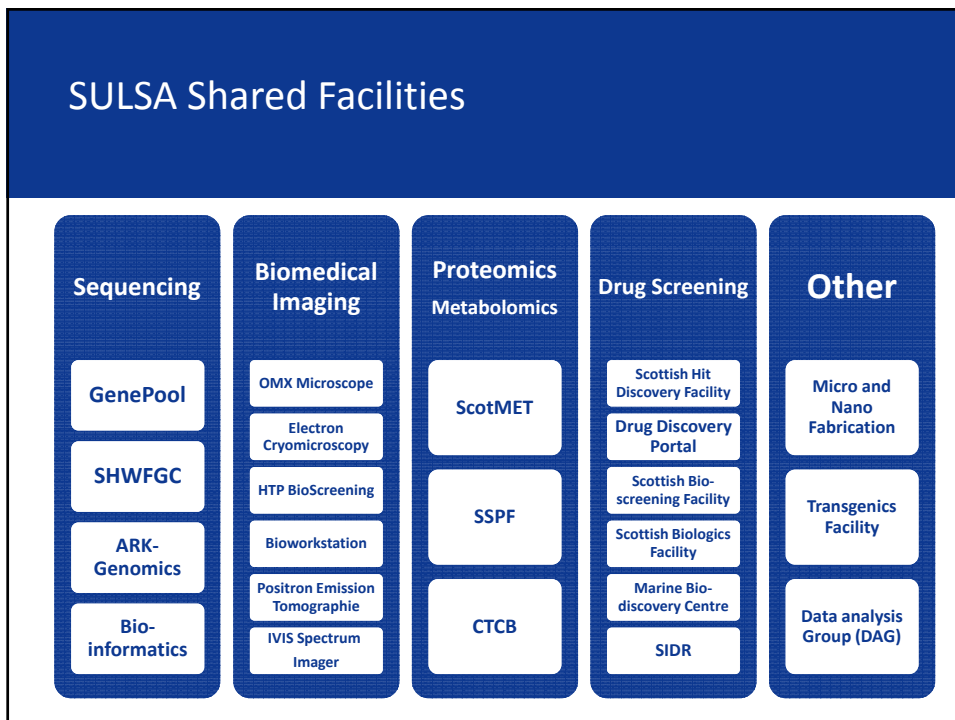
So far: €23M invested over three years
ROI: €98M for SULSA Universities



SULSA - Structure and Organisation



SULSA Shared Facilities



SULSA Facilities– Access rules

1

Equal access for all SULSA researchers in 6 universities

2

Same prices for all SULSA researchers

3

No preferential treatment for local users. Fair queuing system

Universities
SULSA

BioSKAPE

Industry

PhD students

Two supervisors:
University and
Industry

Access to facilities

Projects in response
to industrial
demand

Interchanges

Interchanges of
postdoctoral
scientists

Access to Facilities

Student placements

Masterclasses for Industry

Masterclasses
developed by
SULSA that respond
to industry demand

Masterclasses
should be self
sustaining after
funding period

International Genetically Engineered Machine competition



| | | | |
|------|------------|------------------------------------|--|
| 2008 | Edinburgh | Gold medal | Manufacturers of weapons of mass nutrition |
| 2009 | Aberdeen | Gold medal | Pico plumber |
| | Edinburgh | Gold medal | TNT/RDX Biosensor and Bioremediator |
| 2010 | Aberdeen | Silver medal | AyeSwitch |
| | Edinburgh | Prize for Best Model Gold medal | Communicating through bridges |
| | St Andrews | Gold medal | Cholera quorum sensing system |



Launching SULSA



Positive forces

- €33M to invest
- A common goal
- A focus for excellence around strong subjects for Scotland
- An acknowledgement of the strengths and weaknesses of each party involved
- An elite group of people involved

Negative Forces

- Competition between Universities
- Conflicts of interest for SULSA's Director
- Absence of certain fields of the Life Sciences
- Jealousy from Universities that were excluded from SULSA

SULSA after three years



Positive forces

- A strong and united executive committee
- A PhD programme that is very successful and that promotes collaboration between Unis.
- A network of Shared Facilities
- Research projects and funds that promote collaboration
- A new field – Synthetic Biology

Negative Forces

- Jealousy from Universities that were excluded from SULSA
- A transition phase for funding
- Difficulties to properly engage with industry

SULSA Priorities over the next 5 years

