


NUI Galway OE Gaillimh SEMRU

## THE CONCEPTION & EVOLUTION OF A HI-TECH LOCAL CLUSTER

DR. PAUL RYAN AND DR. NATASHA EVERS - CISC, NUI GALWAY

“NETWORKS AS KNOWLEDGE - BIOTECHNOLOGY NETWORKS IN THE ATLANTIC AREA” NATIONAL UNIVERSITY OF IRELAND, GALWAY - AUGUST 25TH, 2011



NUI Galway OE Gaillimh SEMRU

### WORLD CLASS LEADING MEDICAL DEVICE CLUSTERS



Galway, Ireland    Shenzhen, China    Rio de Janeiro, Brazil


Massachusetts, USA    Winnipeg, Canada    Brisbane, Australia



NUI Galway OE Gaillimh

### STRUCTURE OF PRESENTATION

- MedTech cluster in West of Ireland (Galway)
- The Role of University TCF in the cluster innovation and diversification
- Strategic considerations for TCFs in creating trans-regional Innovation systems in the Atlantic Area




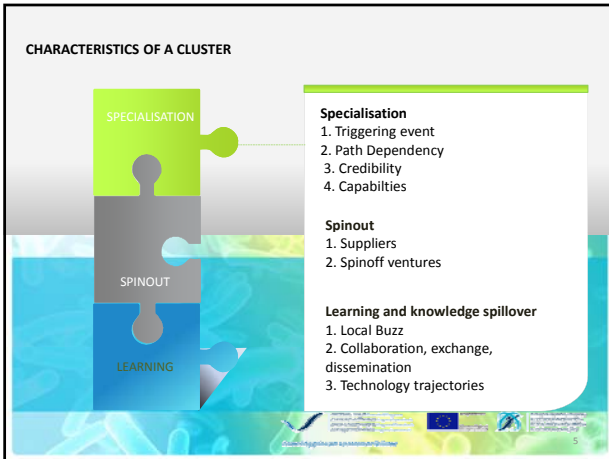
NUI Galway OE Gaillimh

### WHAT IS A CLUSTER?

- Clusters have been conventionally defined as “geographic concentrations of interconnected companies, ... and associated institutions ... in particular fields that compete but also co-operate”

(Porter, 1998, pp. 197–198).





### MEDICAL TECHNOLOGIES – KEY FACTS

- 15 of the 25 Leading Medical technical MNCs
- 2<sup>ND</sup> largest Medical Tech cluster export in Europe (9% exports)

