



# Examinations Office



Hi There!

Semester 1 Exams are approaching fast. Please read on for some important information and dates about your exam timetable.

1st Years will be examined by continuous assessment **only** for semester 1.

## Your Personal Exam Timetable

-Please **CLICK HERE** to view your Semester 1 Exam Timetable.

-While you need to be on campus to view your personal exams timetable, you can see the full timetable **here** and search for your module code.



-It is **your** responsibility to make sure that all the modules that you are being examined in are listed on your exam timetable. pa

-Students **can only access your personal timetable through on-campus internet facilities (Eduroam WiFi service, desktop PCs in the Library and in PC Suites).**

-If you don't already have the up-to-date Eduroam client installed on your device, please click **here** to download and install it.

A step-by-step installation guide is available **here** also.

-The Geteduroam app which is available in app stores simplifies installing Eduroam on mobile phones.

**If you do not see your module on your personal exam timetable, please contact your lecturer for assessment information**

See [here](#) for more information

Please check the **Exams Office** for information on Exam regulations:

1. FAQ's
2. Student ID card
3. Do not bring personal items to exam venue

---

## Everything in Order?

-If all of your exams are listed as you expected...

-Everything is hunky dory!

### Next step:

1. There is no need for further action.

We wish you the best of luck preparing for your exams!



---

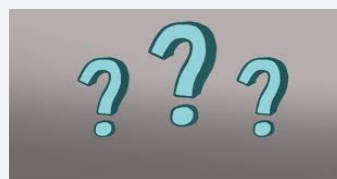
## An Exam is Missing but I AM registered!

-If you are registered for a module and there is exam in that module but it is not listed on your timetable...

-You registered late for the module.

### Next step:

1. Visit SRH (in Áras Uí Chathail) to register as a 'Late Exam Entry'.
2. If course registration is incorrect please email [registration@nuigalway.ie](mailto:registration@nuigalway.ie) to correct.



an

---

## An Exam is Missing - I don't think I'm registered!

-If you are not registered for a module but you are studying it, and there is an exam...

**-You must register for the module urgently**

### Next steps:

1. Contact your College or School Office who advise Registration to register you for the module
2. Once the module is added to your Curriculum, visit SRH (in Áras Uí Chathail) to register as a 'Late Exam Entry'.



will

---

## I'm scheduled for an exam in a module I'm not studying but I MIGHT be registered for!

-If a module appears in your Exam Timetable that you are not studying but it is listed as one of your registered modules on your Curriculum...



**-You are registered for the exam and must deregister for the module urgently**

### Next steps:

1. Contact your College or School Office to advise Registration to deregister you for the module.
2. Check your Curriculum to make sure it has been removed.

---

## I'm scheduled for an exam in a module I'm not studying or registered for!

-If a module appears in your Exam Timetable that you are not studying and that is not listed in the registered modules in your Curriculum...



-You are not registered for this module.

### Next steps:

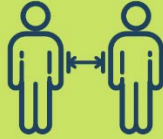
1. There is no action needed. We wish you the best of luck preparing for your exams!

## Exam Info Guidelines:

**Mask Wearing • Social Distancing • Hand Hygiene**



Wear a face covering at all times



Please Maintain



Wash your hands frequently & use a hand sanitizer

WIPES will be provided at the entrance of the exam hall, for cleaning down your exam space.

MORE INFO - <https://www2.hse.ie/conditions/covid19/>

## Important Dates 21/22

 <b>EXAMS OFFICE</b> 		
<b>IMPORTANT DATES</b> <b>2021/2022</b>		
<b>SEMESTER 1</b>	<b>SEMESTER 2</b>	<b>AUTUMN</b>
<b>11th NOV</b>	<b>15th MARCH</b>	<b>7th JULY</b>
<b>EXAM TIMETABLE PUBLISHED</b>	<b>EXAM TIMETABLE PUBLISHED</b>	<b>EXAM TIMETABLE PUBLISHED</b>
<b>6th - 17th December</b>	<b>19th April - 6th May</b>	<b>2nd - 12th August</b>
<b>SEMESTER 1 EXAMS</b>	<b>SEMESTER 2 EXAMS</b>	<b>AUTUMN EXAMS</b>
<b>Jan 2022</b>	<b>10th - 15th June</b>	<b>26th August</b>
<b>Provisional Results</b>	<b>Final Results (UG)</b>	<b>Autumn Results (UG)</b>
<small>Available on BLACKBOARD Check with School / Lecturer for Release Dates</small>	<b>20th - 22nd June</b>	<b>6th September</b>
	<b>Final Results (PG)</b>	<b>Autumn Results (PG)</b>

MORE INFO - [www.nuigalway.ie/exams](http://www.nuigalway.ie/exams)

---

## Student Services

-Student Services have a range of valuable supports on offer over the next few weeks to help you both before and during exams.

-Workshops, helplines and online resources are just some of the many options available and have been developed based on your responses to our recent survey on exam supports. Details available [here](#).

-This will be updated regularly throughout the exam period so check there first if you have questions or need help. (You will need to be logged into your campus account to access this Microsoft Sway).

---

## Disability Support Service

If you have agreed exam accommodations with the Disability Support Service then please **check your NUI Galway email** for information on the location of your exams.

### Useful Contact Information

College of Arts, Social Sciences & Celtic Studies	091-493954	<a href="http://www.nuigalway.ie/arts">www.nuigalway.ie/arts</a>
School of Business & Economics	091-492612	<a href="http://www.nuigalway.ie/commerce">www.nuigalway.ie/commerce</a>
School of Law	091-492389	<a href="http://www.nuigalway.ie/law">www.nuigalway.ie/law</a>
School of Engineering	091-492101	<a href="http://www.nuigalway.ie/engineering">www.nuigalway.ie/engineering</a>
College of Medicine, Nursing & Health Sciences	091-544475	<a href="http://www.nuigalway.ie/colleges/medicine-nursing-and-health-sciences">www.nuigalway.ie/colleges/medicine-nursing-and-health-sciences</a>
School of Nursing and Midwifery	091-493432	<a href="http://www.nuigalway.ie/nursing.midwifery">www.nuigalway.ie/nursing.midwifery</a>
School of Computer Science	091-493143/493836	<a href="http://www.nuigalway.ie/science">www.nuigalway.ie/science</a>
Fees Office	091-492386	<a href="http://www.nuigalway.ie/student_fees">www.nuigalway.ie/student_fees</a>